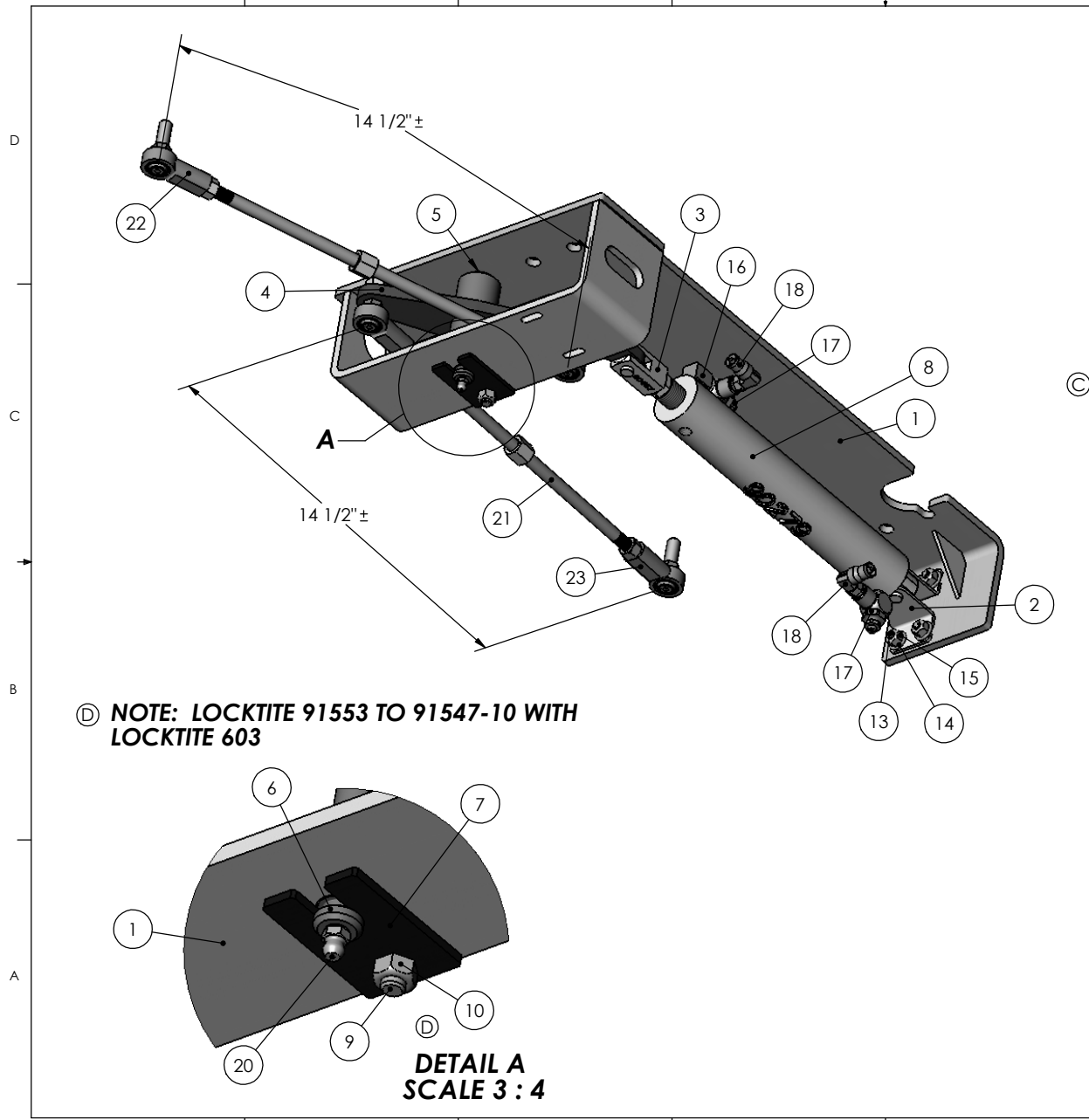


8 7 6 5 4 3 2 1

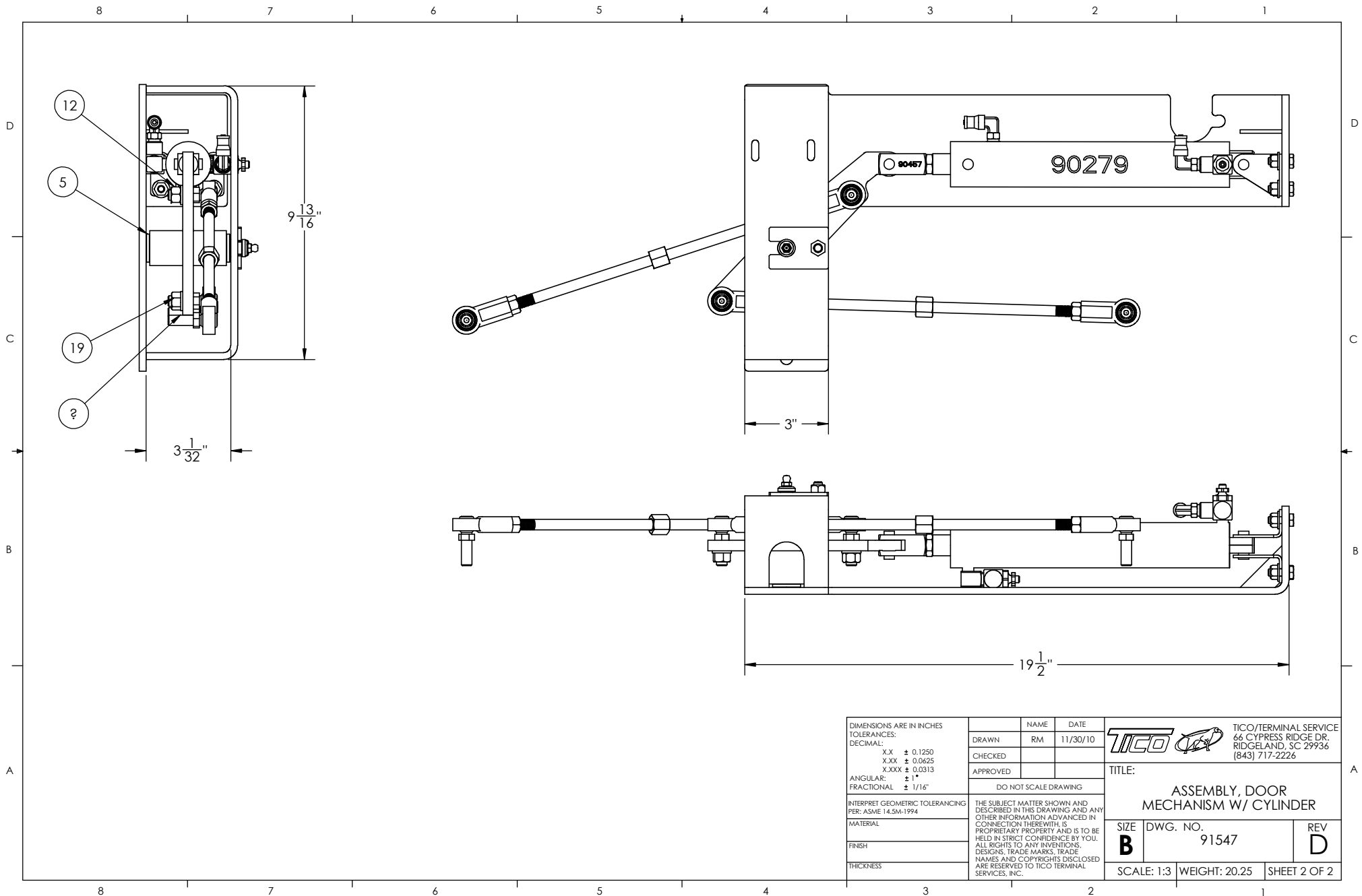



REV.	DESCRIPTION	ECN	DATE	APPROVED
A	REMOVED 90458-1 FROM BILL OF MATERIALS	11141	1/21/2011	HK
B	BRGS WERE PTFE; CONN. RODS WERE SUB ASSY	11185	2/7/2011	RM
C	TIE RODS WERE 90888	11200	2/15/2011	RM
D	REVISED DWG ADDED DETAIL A & NOTE	12111	1/10/2012	DC

24	1	90458	BIMBA PIVOT BRACKET #D-229	0.08
23	2	90460	R/H DOOR BALL JOINT	0.20
22	2	90459	L/H DOOR BALL JOINT	0.20
21	2	91547-13	TIE ROD, DOOR MECH 12-1/2"	0.09
20	1	11010	GREASE FITTING, 1/4-28 SAE	0.01
19	3	85156	NUT, HEX 3/8-24 UNF LH	
18	2	41024	1/4" x 1/8" NPT SWIVEL	0.01
17	2	90361	1/8 RT ANGLE FLOW CONTROL	0.02
16	1	41025	FITTING BRASS L 1/4" X 1/4"	0.01
15	4	85034	LOCKNUT, 1/4-20	
14	4	85111	WASHER, FLAT 1/4	
13	4	82359	BOLT, HEX 1/4-20 x 3/4 Lg	
12	3	85080	NUT, HEX 3/8-24	
11	2	85113	WASHER, FLAT 3/8	
10	1	85035	LOCKNUT, 5/16-18	
9	1	82360	BOLT, HEX 5/16-18 x 3/4 Lg	
8	1	90279	AIR DOOR CYLINDER	6.14
7	1	91547-8	CLIP-SHAFT SUPPORT	0.10
6	1	91547-4	PIN PIVOT	0.30
5	2	91553	BEARING, FLANGE 5/8 ID , OILITE	0.07
4	1	91547-10	PIVOT ARM DOOR MECHANISM	1.54
3	1	90457	CLEVIS DOOR	0.21
2	1	90458-1	BIMBA PIVOT BRACKET #D-229	0.08
1	1	91547-1	WELDMENT DOOR MECHANISM	10.76

ITEM NO.	Defa ult/Q TY.	PART NUMBER	Description	Weight
DIMENSIONS ARE IN INCHES				
TOLERANCES:				
DECIMAL:				
X.X ± 0.06				
X.XX ± 0.03				
X.XXX ± 0.005				
ANGULAR: ± 0.5°				
FRACTIONAL: ± 1/32"				
INTERPRET GEOMETRIC TOLERANCING PER: ASME 14.5M-1994				
MATERIAL				
FINISH				
THICKNESS				
DRAWN		NAME	DATE	
CHECKED				
APPROVED				
DO NOT SCALE DRAWING				
TICO/TERMINAL SERVICE 66 CYPRESS RIDGE DR. RIDGELAND, SC 29936 (843) 717-2226				
TITLE: ASSEMBLY, DOOR MECHANISM W/ CYLINDER				
SIZE B		DWG. NO. 91547		REV D
SCALE: 3:8		WEIGHT: 20.25		SHEET 1 OF 2

8 7 6 5 4 3 2 1



DIMENSIONS ARE IN INCHES		NAME	DATE	 TICO/TERMINAL SERVICE 66 CYPRESS RIDGE DR. RIDGELAND, SC 29936 (843) 717-2226	
TOLERANCES:		DRAWN	RM		11/30/10
DECIMAL:		CHECKED			
X.X ± 0.1250 X.XX ± 0.0625 X.XXX ± 0.0313		APPROVED			
ANGULAR:		DO NOT SCALE DRAWING			
FRACTIONAL:		THE SUBJECT MATTER SHOWN AND DESCRIBED IN THIS DRAWING AND ANY OTHER INFORMATION ADVANCED IN CONNECTION THEREWITH IS PROPRIETARY PROPERTY AND IS TO BE HELD IN STRICT CONFIDENCE BY YOU. ALL RIGHTS TO ANY INVENTIONS, DESIGNS, TRADE MARKS, TRADE NAMES AND COPYRIGHTS DISCLOSED ARE RESERVED TO TICO TERMINAL SERVICES, INC.			
INTERPRET GEOMETRIC TOLERANCING PER: ASME 14.5M-1994		TITLE:			
MATERIAL		ASSEMBLY, DOOR MECHANISM W/ CYLINDER			
FINISH		SIZE	DWG. NO.	REV	
THICKNESS		B	91547	D	
		SCALE: 1:3	WEIGHT: 20.25	SHEET 2 OF 2	