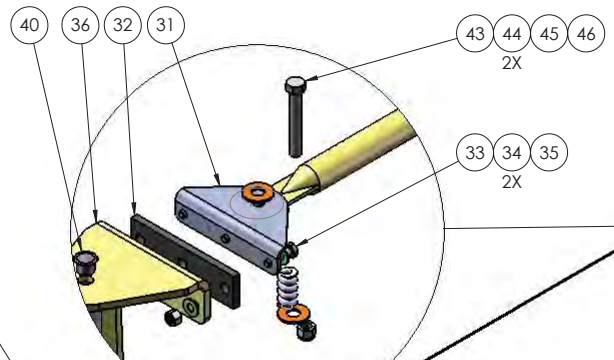
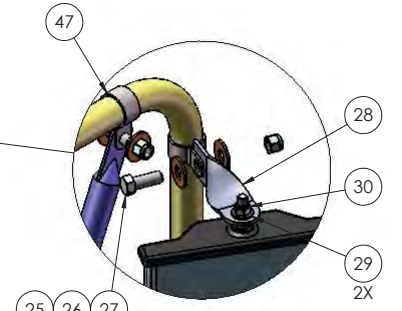


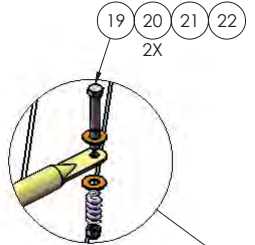
DETAIL E  
SCALE 1 : 4



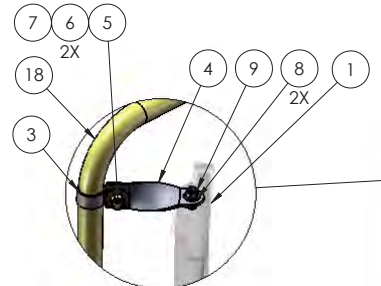
DETAIL F  
SCALE 1 : 3



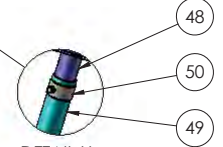
DETAIL G  
SCALE 1 : 3



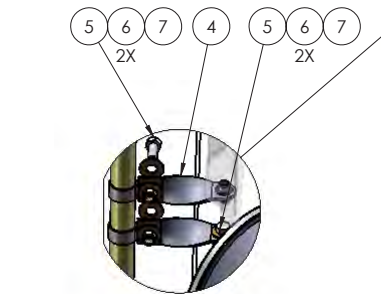
DETAIL D  
SCALE 1 : 4



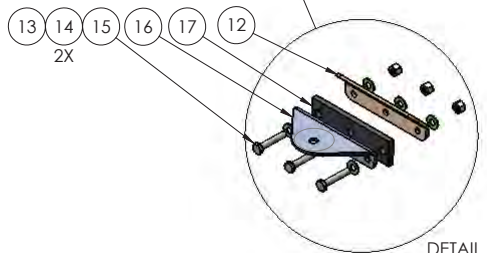
DETAIL C  
SCALE 1 : 4



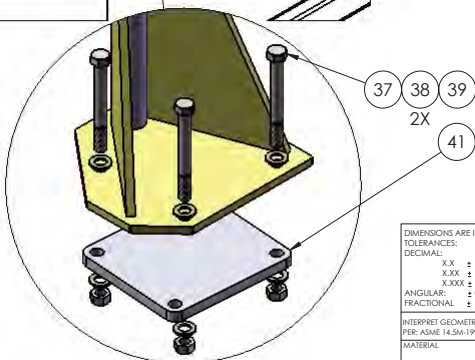
DETAIL H  
SCALE 1 : 4



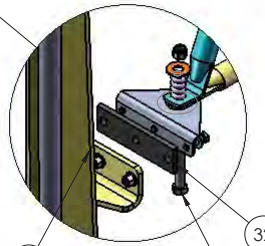
DETAIL B  
SCALE 1 : 4



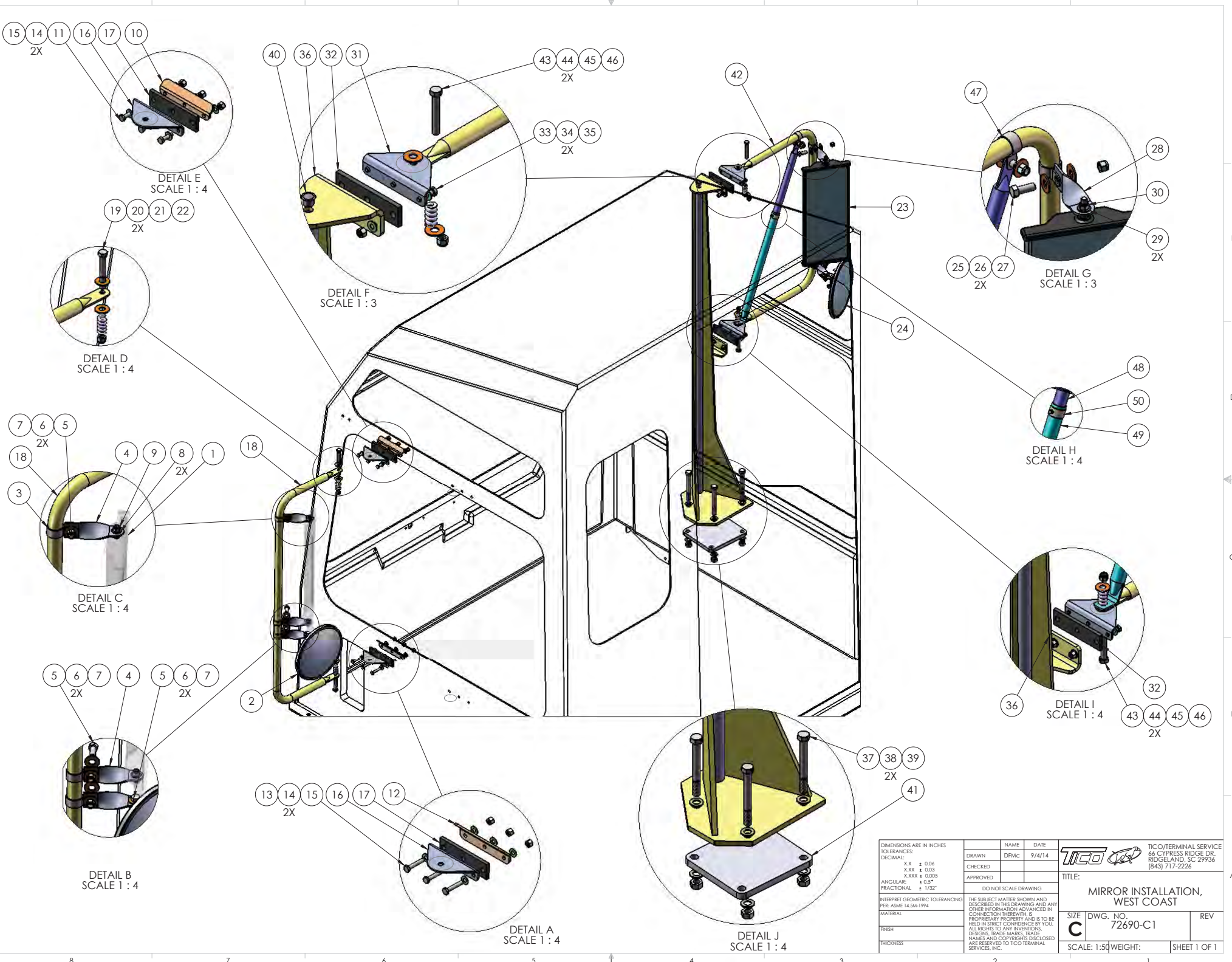
DETAIL A  
SCALE 1 : 4



DETAIL J  
SCALE 1 : 4



DETAIL I  
SCALE 1 : 4



DIMENSIONS ARE IN INCHES		NAME	DATE		TICO/TERMINAL SERVICE 66 CYPRESS RIDGE DR. RIDGELAND, SC 29936 (843) 717-2226
TOLERANCES:		DRAWN	DFMC		
DECIMAL:		CHECKED			
.XX ± 0.06		APPROVED			
.XXX ± 0.03		DO NOT SCALE DRAWING			
.XXX ± 0.005		THE SUBJECT MATTER SHOWN AND DESCRIBED IN THIS DRAWING AND ANY OTHER INFORMATION ADVANCED IN CONNECTION THEREWITH IS PROPRIETARY PROPERTY AND IS TO BE HELD IN STRICT CONFIDENCE BY YOU. ALL RIGHTS TO ANY INVENTIONS, DESIGNS, TRADE MARKS, TRADE NAMES AND COPYRIGHTS DISCLOSED ARE RESERVED TO TICO TERMINAL SERVICES, INC.			
ANGULAR: ± 0.5°		INTERPRET GEOMETRIC TOLERANCING PER: ASME 14.5M-1994		TITLE:	
FRACTIONAL: ± 1/32"				MIRROR INSTALLATION, WEST COAST	
MATERIAL		SIZE		DWG. NO.	
FINISH		C		72690-C1	
THICKNESS		SCALE: 1:50		WEIGHT:	
				SHEET 1 OF 1	



TICO PRO-SPOTTER				
S/N:		MIRRORS - WEST COAST/CONVEX -98" VEE STANCHION		72690
ITEM	PART #	QTY/M	DESCRIPTION	TASK
	72690	REF	RIGHT MIRROR, INSTALLATION DRAWINGS	
23	40009	1	MIRROR, WEST COAST/CONVEX	
24	50090	1	MIRROR, CONVEX	
25	80315	4	BOLT, HEX 3/8-16 X 1", LONG STAINLESS STEEL	
26	80314	12	WASHER, FLAT 3/8", STAINLESS STEEL	
27	80320	5	NUT,NYLON LOCK, 3/8-16", STAINLESS STEEL	
28	50240	3	BRACKET, TWISTED	
29	80313	3	WASHER, FLAT 5/16", STAINLESS STEEL	
30	80319	3	NUT, NYLON LOCK, 5/16-18, STAINLESS STEEL	
31	50238	2	MOUNT, ANGLE	
32	91609	2	ISOLATOR, RUBBER	
33	80361	6	BOLT, HEX, 1/4-20NC X 1" LONG, STAINLESS STEEL	
34	80311	12	WASHER, FLAT 1/4", STAINLESS STEEL	
35	80360	6	NUT, NYLON LOCK, 1/4-20	
36	91920	1	STANCHION, MIRROR VEE	
37	82528	4	BOLT, HEX, 1/2-13 X 4 1/2" LONG	
38	85093	8	WASHER, FLAT, 1/2"	
39	85027	4	NUT, NYLON LOCK, 1/2" NC	
40	91515-7	1	PLUG, 5/8"	
41	91920-5	1	CLAMP PLATE, GALVANIZED	
42	50236	1	LOOP, MIRROR, 14"	
43	80329	2	BOLT, HEX 3/8-16 X 2 1/2" LONG, STAINLESS STEEL	
44	80314	4	WASHER, FLAT 3/8", STAINLESS STEEL	
45	50250	2	SPRING, COMPRESSION, STAINLESS STEEL	
46	80320	2	NUT, NYLON LOCK, 3/8-16", STAINLESS STEEL	
47	50239	5	CLAMP, 1"	
48	50254	1	STABALIZER BAR, TOP	
49	50237	1	STABALIZER BAR, BOTTOM	
50	50255	1	COLLAR, STABLIZER TUBE	
REV	DATE	BY		SHEET
C	12/9/15	DFM		2 OF 2

TICO MANUFACTURING - RIDGELAND, SC 29936