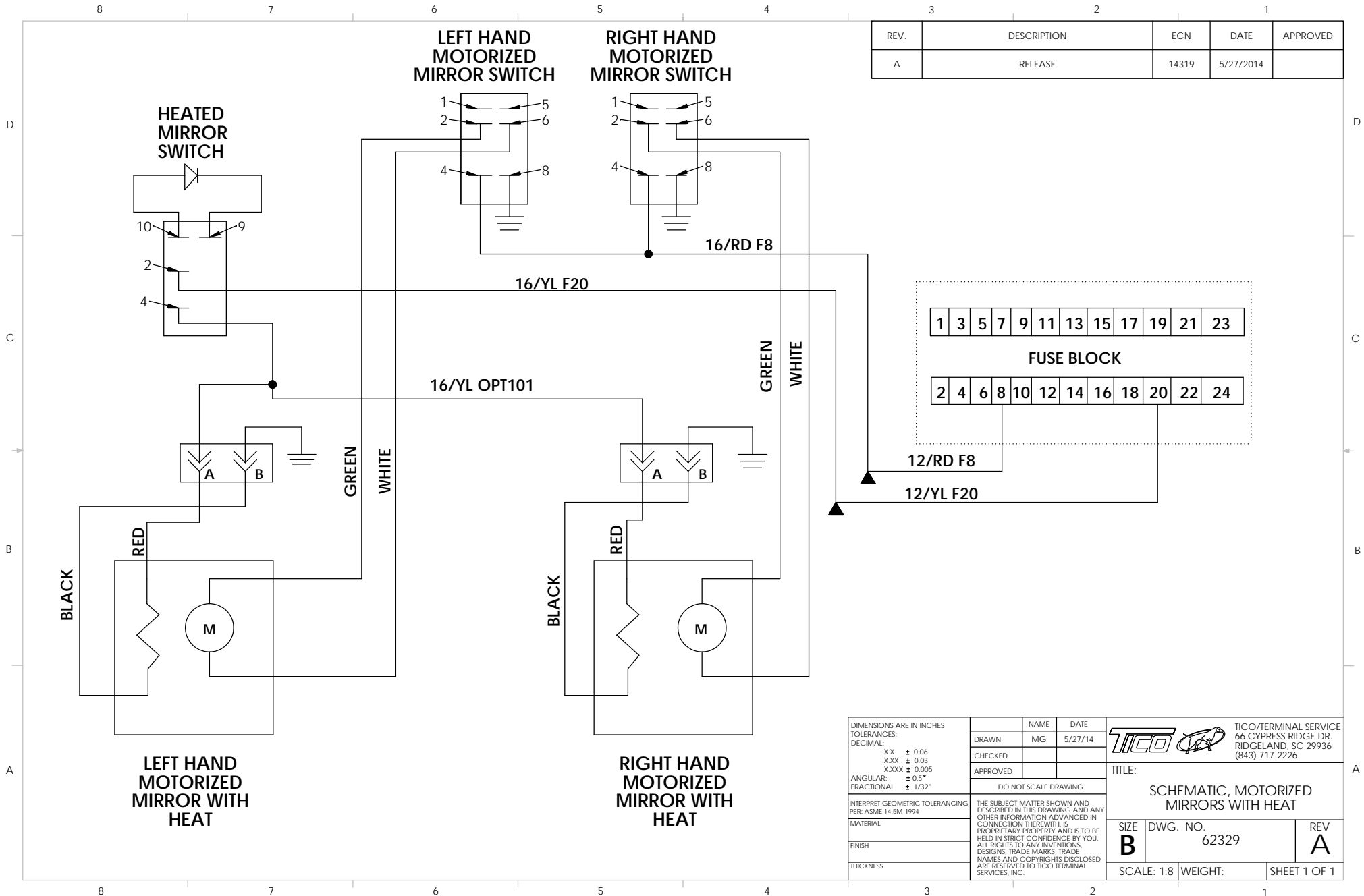


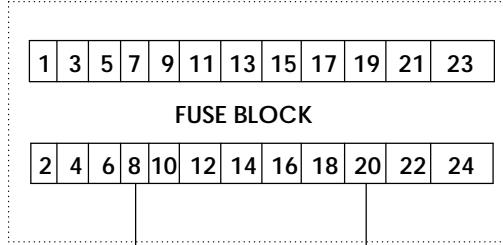
DIMENSIONS ARE IN INCHES		NAME	DATE	TICO/TERMINAL SERVICE 66 CYPRESS RIDGE DR. RIDGELAND, SC 29936 (843) 717-2226
TOLERANCES:		DRAWN	SMB 09/04/2014	
DECIMAL:		REVISD	MPC 06/02/2015	
.XX ± 0.06 .XXX ± 0.03 .XXXX ± 0.005 ANGULAR: ± 0.5° FRACTIONAL: ± 1/32"		APPROVED		
DO NOT SCALE DRAWING				TITLE:
THE SUBJECT MATTER SHOWN AND DESCRIBED IN THIS DRAWING AND ANY OTHER INFORMATION ADVANCED IN CONNECTION THEREWITH IS PROPRIETARY PROPERTY AND IS TO BE HELD IN STRICT CONFIDENCE BY YOU. ALL RIGHTS TO ANY INVENTIONS, DESIGNS, TRADE MARKS, TRADE NAMES AND COPYRIGHTS DISCLOSED ARE RESERVED TO TICO TERMINAL SERVICES, INC.				SIZE C DWG. NO. 72674-D1 REV
FINISH				SHEET 1 OF 1
THICKNESS				

TICO PRO-SPOTTER				
S/N:		ASSEMBLY, MIRRORS, MOTORIZED/CONVEX, HEATED, 122"		72677
ITEM	PART #	QTY/M	DESCRIPTION	
	72295A	REF	DRAWING, INSTALLATION, LEFT MIRROR	
	62329	1	SCHEMATIC, MOTORIZED MIRRORS	
1	50170	1	MIRROR, MOTORIZED, LEFT-HAND	
2	90697	1	MIRROR, CONVEX, HEATED	
3	50239	3	CLAMP, 1"	
4	50240	3	BRACKET, TWISTED	
5	80315	4	BOLT, HEX HEAD, STAINLESS STEEL, 3/8-16 X 1 LONG	
6	80314	8	WASHER, FLAT, STAINLESS STEEL, 3/8-16	
7	80320	4	LOCKNUT, NYLON, STAINLESS STEEL, 3/8-16	
8	80313	4	WASHER, FLAT, STAINLESS STEEL, 5/16-18	
9	80319	4	LOCKNUT, NYLON, STAINLESS STEEL, 5/16-18	
10	50241	2	BRACKET, UPPER, MIRROR	
11	80361	6	BOLT, HEX HEAD, STAINLESS STEEL, 1/4-20 X 1 LONG	
12	50243	2	BRACKET, LOWER, MIRROR	
13	80322	6	BOLT, HEX HEAD, STAINLESS STEEL, 1/4-20 X 1 1/2 LONG	
14	80311	24	WASHER, FLAT, STAINLESS STEEL, 1/4	
15	50238	4	ANGLE MOUNT, MIRROR	
16	91609	4	ISOLATOR, RUBBER	
17	80360	12	LOCKNUT, NYLON, 1/4-20	
18	50242	2	BRACE, HORIZONTAL, MIRROR, FORWARD	
19	50235	2	BRACE, HORIZONTAL, MIRROR, AFTER	
20	80316	4	BOLT, HEX HEAD, STAINLESS STEEL, 3/8-16 X 1 1/4 LONG	
21	80314	8	WASHER, FLAT, STAINLESS STEEL, 3/8-16	
22	60857	4	ISOLATOR, RUBBER	
23	80320	4	LOCKNUT, STAINLESS STEEL, 3/8-16	
24	50254	1	STABILIZER BAR, TOP	
25	50239	4	CLAMP, 1"	
26	80315	1	BOLT, HEX HEAD, STAINLESS STEEL, 3/8-16 X 1 LONG	
27	80314	2	WASHER, FLAT, STAINLESS STEEL, 3/8-16	
28	80320	1	LOCKNUT, STAINLESS STEEL, 3/8-16	
29	50237	1	STABILIZER BAR, BOTTOM	
30	50255	2	COLLAR, STABLIZER BAR	
31	50256	1	SET SCREW, COLLAR	
32	50234	1	LOOP, MIRROR, 11"	
33	80318	2	BOLT, HEX HEAD, STAINLESS STEEL, 3/8-16 X 2 3/4 LONG	
34	80314	4	WASHER, FLAT, STAINLESS STEEL, 3/8-16	
35	50250	2	SPRING, COMPRESSION, STAINLESS STEEL	
36	80320	2	LOCKNUT, NYLON, STAINLESS STEEL, 3/8-16	
NOT SHOWN	90959	2	SWITCH, MIRROR, MOMENTARY	
REV	DATE	BY		SHEET
D	05/09/2016	MPC		1 OF 2

TICO PRO-SPOTTER				
S/N:		ASSEMBLY, MIRRORS, MOTORIZED/CONVEX, HEATED, 122"		72677
ITEM	PART #	QTY/M	DESCRIPTION	
	72295A	REF	DRAWING, INSTALLATION, RIGHT MIRROR	
	62329	REF	SCHEMATIC, MOTORIZED MIRRORS	
37	50180	1	MIRROR, MOTORIZED, RIGHT-HAND	
38	90697	1	MIRROR, CONVEX, HEATED	
39	50239	2	CLAMP, 1"	
40	50240	3	BRACKET, TWISTED	
41	80315	4	BOLT, HEX HEAD, STAINLESS STEEL, 3/8-16 X 1 LONG	
42	80314	8	WASHER, FLAT, STAINLESS STEEL, 3/8-16	
43	80320	4	LOCKNUT, NYLON, STAINLESS STEEL, 3/8-16	
44	80313	4	WASHER, FLAT, STAINLESS STEEL, 5/16-18	
45	80319	4	LOCKNUT, NYLON, STAINLESS STEEL, 5/16-18	
46	91923	1	STANCHION, MIRROR, VEE, GALVANIZED	
47	91609	2	ISOLATOR, RUBBER	
48	50238	2	ANGLE MOUNT, MIRROR	
49	80361	6	BOLT, HEX HEAD, STAINLESS STEEL, 1/4-20 X 1 LONG	
50	80311	12	WASHER, FLAT, STAINLESS STEEL, 1/4	
51	80360	6	LOCKNUT, NYLON, 1/4-20	
52	91920-5	1	CLAMP PLATE, GALVANIZED	
53	82528	4	BOLT, HEX HEAD, 1/2-13 X 4 1/2 LONG	
54	85093	8	WASHER, FLAT, 1/2-13	
55	85027	4	LOCKNUT, NYLON, 1/2-13	
56	91515-7	1	PLUG, 5/8	
57	50236	1	LOOP, MIRROR, 14"	
58	80329	2	BOLT, HEX HEAD, STAINLESS STEEL, 3/8-16 X 2 1/2 LONG	
59	80314	4	WASHER, FLAT, STAINLESS STEEL, 3/8-16	
60	50250	2	SPRING, COMPRESSION, STAINLESS STEEL	
61	80320	2	LOCKNUT, NYLON, STAINLESS STEEL, 3/8-16	
62	50254	1	STABILIZER BAR, TOP	
63	80315	1	BOLT, HEX HEAD, STAINLESS STEEL, 3/8-16 X 1 LONG	
64	80314	2	WASHER, FLAT, STAINLESS STEEL, 3/8-16	
65	80320	1	LOCKNUT, NYLON, STAINLESS STEEL, 3/8-16	
66	50237	1	STABILIZER BAR, BOTTOM	
67	50255	2	COLLAR, STABLIZER BAR	
68	50256	1	SET SCREW, COLLAR	
NOT SHOWN	620601	2	HARNESS-MIRROR DIRECTION	
NOT SHOWN	90745	1	SWITCH, HEATED MIRROR, ROCKER	
NOT SHOWN	42132	4	GROMMET, RUBBER, 5/16" INSIDE DIAMETER	
REV	DATE	BY		SHEET
D	05/09/2016	MPC		2 OF 2
TICO MANUFACTURING - RIDGELAND, SC 29936				



REV.	DESCRIPTION	ECN	DATE	APPROVED
A	RELEASE	14319	5/27/2014	



DIMENSIONS ARE IN INCHES		NAME	DATE	 TICO/TERMINAL SERVICE 66 CYPRESS RIDGE DR. RIDGELAND, SC 29936 (843) 717-2226	
TOLERANCES:		DRAWN	MG		5/27/14
DECIMAL:		CHECKED			
.XX ± 0.06 .XXX ± 0.03 .XXX ± 0.005		APPROVED			
ANGULAR:		DO NOT SCALE DRAWING			
FRACTIONAL:		THE SUBJECT MATTER SHOWN AND DESCRIBED IN THIS DRAWING AND ANY OTHER INFORMATION ADVANCED IN CONNECTION THEREWITH, IS PROPRIETARY PROPERTY AND IS TO BE HELD IN STRICT CONFIDENCE BY YOU. ALL RIGHTS TO ANY INVENTIONS, DESIGNS, TRADE MARKS, TRADE NAMES AND COPYRIGHTS DISCLOSED ARE RESERVED TO TICO TERMINAL SERVICES, INC.			
INTERPRET GEOMETRIC TOLERANCING PER: ASME 14.5M-1994		TITLE:		SCHEMATIC, MOTORIZED MIRRORS WITH HEAT	
MATERIAL		SIZE	DWG. NO.		
FINISH		B	62329	REV	
THICKNESS		SCALE: 1:8		WEIGHT:	
				SHEET 1 OF 1	