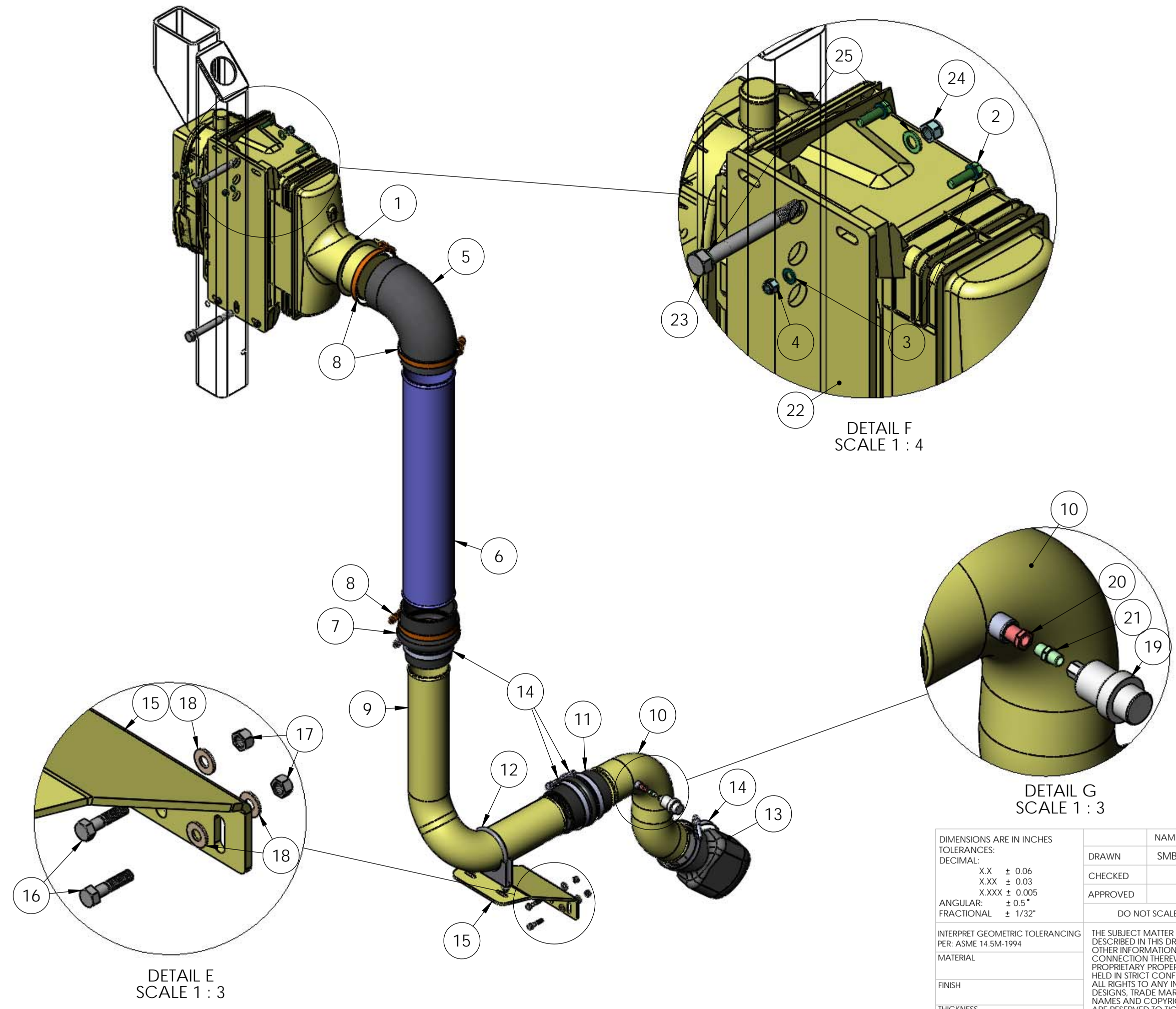


8 7 6 5 4 3 2 1

D  
C  
B  
A


D  
C  
B  
A



DETAIL F  
SCALE 1 : 4

DETAIL G  
SCALE 1 : 3

DETAIL E  
SCALE 1 : 3

DIMENSIONS ARE IN INCHES		NAME	DATE	 TICO/TERMINAL SERVICE 66 CYPRESS RIDGE DR. RIDGELAND, SC 29936 (843) 717-2226
TOLERANCES:		DRAWN	SMB 4/26/14	
DECIMAL:		CHECKED		
X.X ± 0.06 X.XX ± 0.03 X.XXX ± 0.005 ANGULAR: ± 0.5° FRACTIONAL ± 1/32"		APPROVED		
INTERPRET GEOMETRIC TOLERANCING PER: ASME 14.5M-1994		DO NOT SCALE DRAWING		TITLE:
MATERIAL				AIR INTAKE SYSTEM, OSB TIER 4I
FINISH				SIZE DWG. NO. REV
THICKNESS				<b>B</b> 72629-A1 B1
			SCALE: 1:12	SHEET 1 OF 1

8 7 6 5 4 3 2 1

TICO PRO-SPOTTER				
S/N:		AIR INTAKE SYSTEM - QSB 4i		72629
ITEM	PART #	QTY/M	DESCRIPTION	TASK
	72629-A1	REF	AIR INTAKE SYSTEM, QSB TIER 4i	
1	61921	1	AIR CLEANER	
	61922	REF	FILTER ELEMENT PRIMARY(FURN W/ FILTER)	
	61922-1	REF	FILTER ELEMENT SECONDARY(FURN W/FILTR)	
2	82383	4	BOLT, HEX, 3/8 NC X 1 1/4" LG	
3	85091	8	WASHER, 3/8	
4	85025	4	NUT, NYLOCK, 3/8-16 NC	
5	62275	1	ELBOW, 90°, RUBBER, 5" ID	
6	12309	1	TUBE, AIR INTAKE, VERTICAL	
7	62274	1	HOSE, 5" TO 4" REDUCER HUMP	
8	40190-1	3	CLAMP, CONSTANT TORQUE, 5 1/4 TO 6 1/8"	
9	62424	1	TUBE, REDUCER TO HUMP HOSE	
10	61966	1	TUBE, COBRA TO REDUCER	
11	40170-16	1	HOSE, 4" TO 4" HUMP	
12	40066	1	CLAMP, SADDLE, 4"	
13	62276	1	ELBOW, COBRA	
14	40190	3	CLAMP, CONSTANT TORQUE, 4 1/4 TO 5 1/8"	
15	12946	1	BRACKET, TIER, 4i, 0° COMMON FRAME AIR INTAKE	
16	82394	2	BOLT, HEX, 3/8-16 X 1 1/2" LG	
17	85036	2	LOCKNUT, 3/8-16	
18	85113	4	WASHER, FLAT, 3/8	
19	40627	1	AIR FILTER MINDERGAGE	
20	61925	1	MOUNT PLATE, AIR CLEANER	
21	40813	1	REDUCER, 1/4 NPT TO 1/8 NPT	
22	42233	1	HEX NIPPLE, 1/8 NPT	
23	82573	2	BOLT	
24	85027	2	NUT, NYLOK	
25	85093	4	WASHER	
REV	DATE	BY		SHEET
				1 OF 1