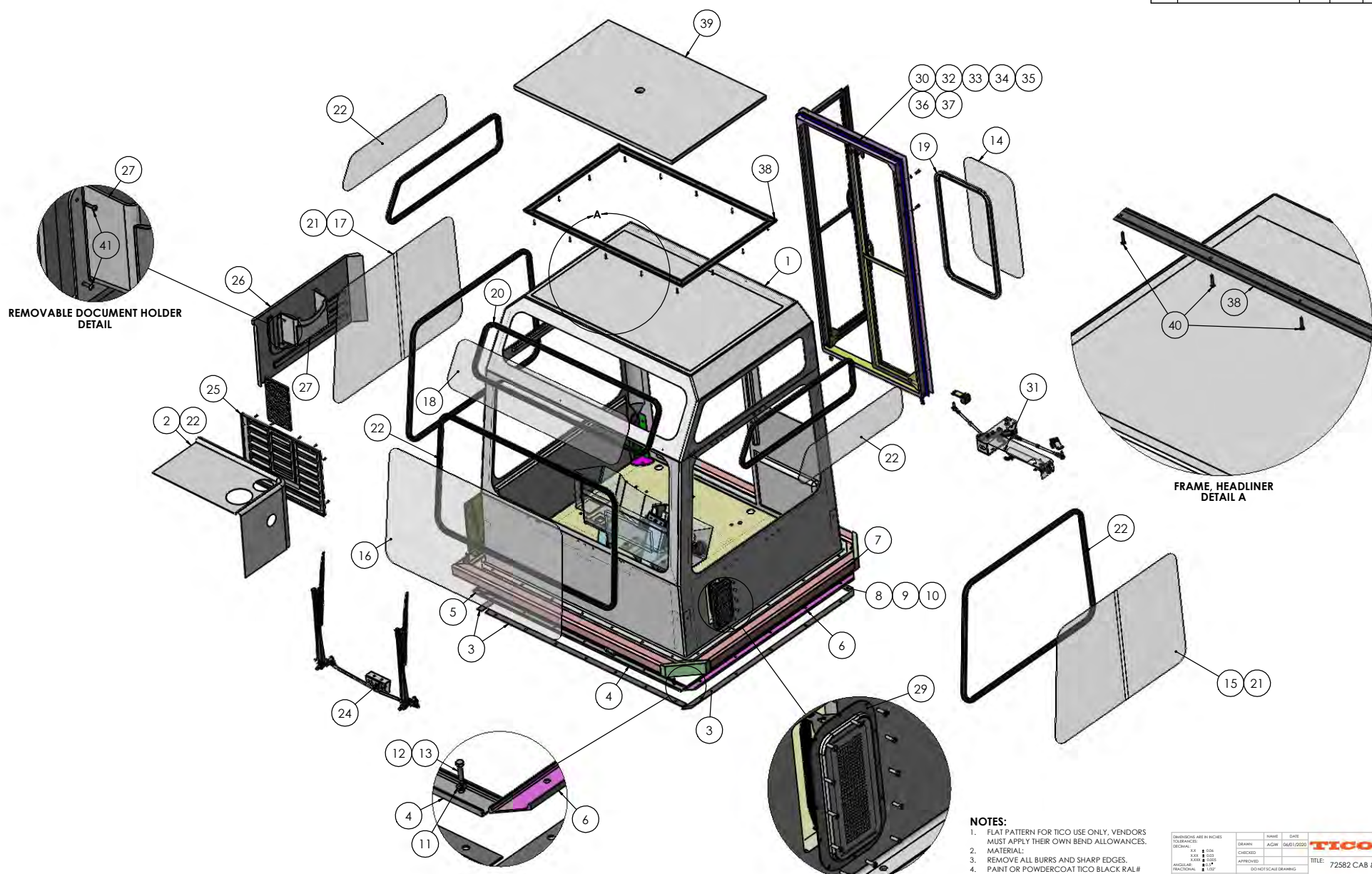


REV	DESCRIPTION	ECN	DATE	BY	APPROVED



REMOVABLE DOCUMENT HOLDER DETAIL

FRAME, HEADLINER DETAIL A

CHANNEL CAB HOLD DOWN DETAIL

VENT, SIDE DETAIL

- NOTES:**
1. FLAT PATTERN FOR TICO USE ONLY, VENDORS MUST APPLY THEIR OWN BEND ALLOWANCES.
 2. MATERIAL:
 3. REMOVE ALL BURRS AND SHARP EDGES.
 4. PAINT OR POWDERCOAT TICO BLACK RAL# 9005.
 5. IDENTIFY COMPONENT PER TICO'S ENGINEERING MARKING SPECIFICATION.
 6. THIS PART REPLACES TICO #

DIMENSIONS ARE IN INCHES TOLERANCES: DECIMAL .005 FRACTIONAL 1/16"	DRAWN: JACW CHECKED: [Signature] APPROVED: [Signature]	NAME: [Blank] DATE: 06/01/2020	TICO TICO MANUFACTURING 44 CYPRESS RIDGE DR. ROCKDALE, IL 60424 TICOFACTORS.COM
THE SUBJECT MATTER SHOWN AND DESCRIBED IN THIS DRAWING AND ANY OTHER INFORMATION CONTAINED HEREIN IS THE PROPERTY OF TICO. IT IS TO BE USED ONLY FOR THE PURPOSES SPECIFIED AND IS NOT TO BE REPRODUCED OR TRANSMITTED IN ANY FORM OR BY ANY MEANS, ELECTRONIC OR MECHANICAL, INCLUDING PHOTOCOPYING, RECORDING, OR BY ANY INFORMATION STORAGE AND RETRIEVAL SYSTEM, WITHOUT THE WRITTEN PERMISSION OF TICO.			TITLE: 72582 CAB & DOOR ASSY
SIZE: D DWG. NO.: 72582-A1	SCALE: 1:4	WEIGHT: [Blank]	REV: [Blank] SHEET 1 OF 1

TICO CAB & DOOR ASSY

