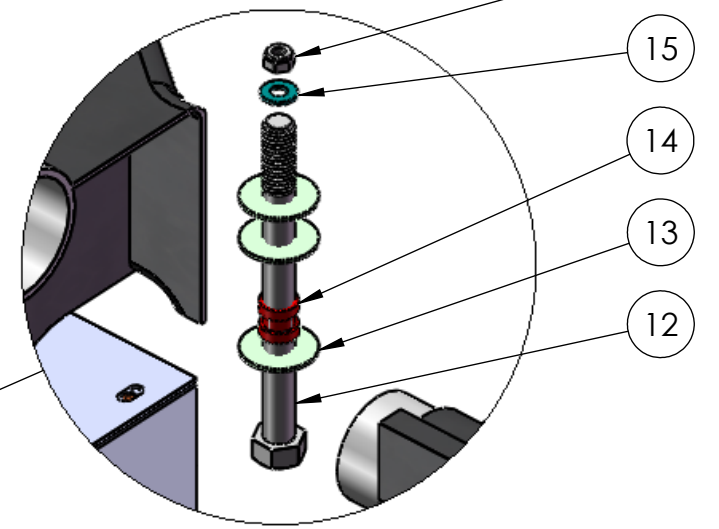
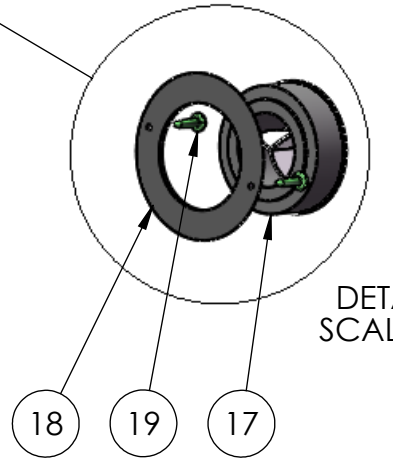
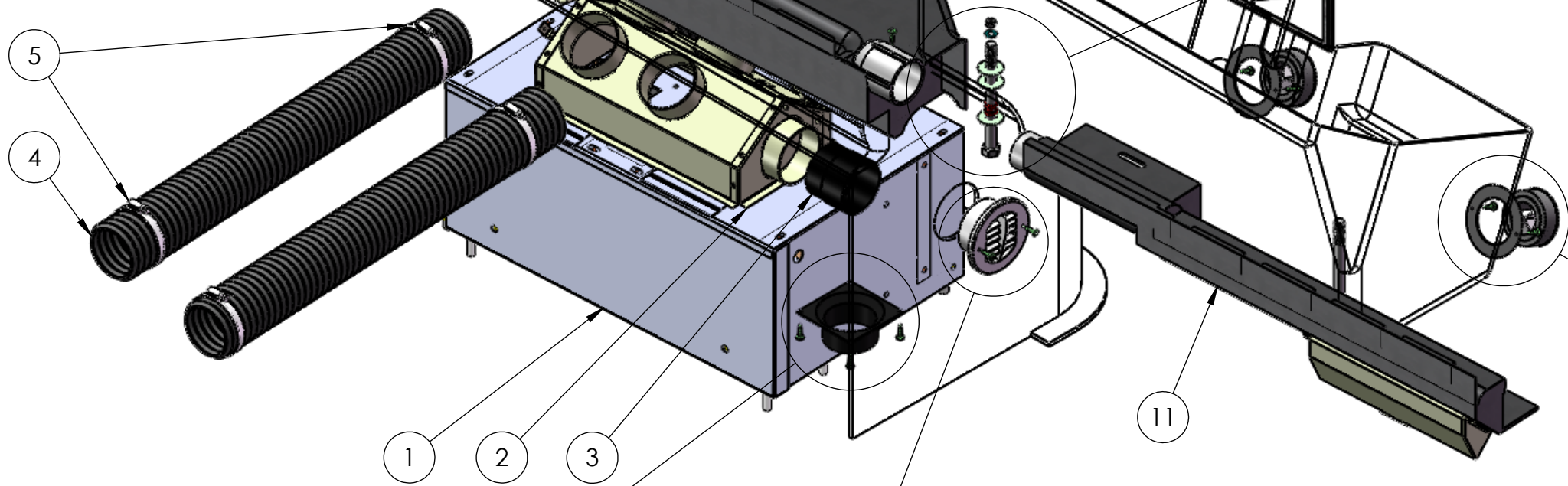


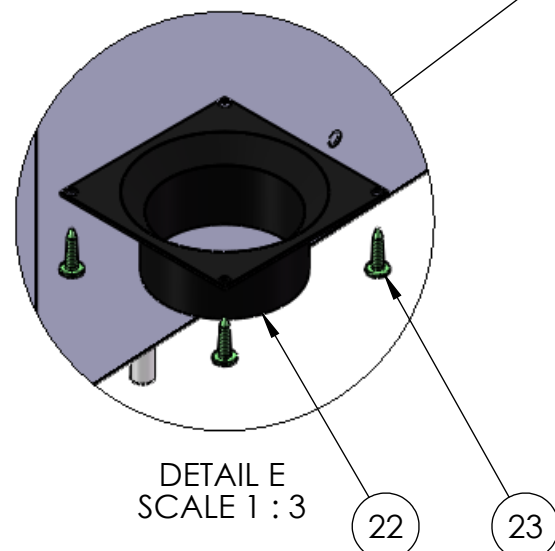
DETAIL A
SCALE 1 : 3



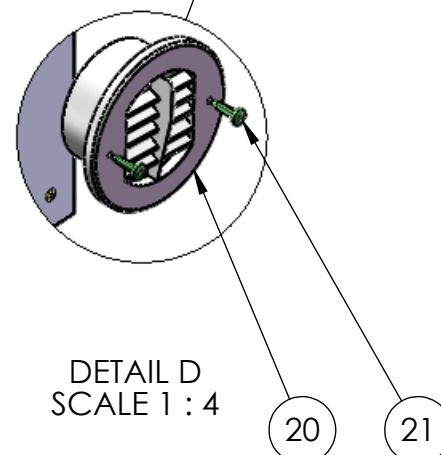
DETAIL B
SCALE 1 : 3




DETAIL C
SCALE 1 : 4



DETAIL E
SCALE 1 : 3



DETAIL D
SCALE 1 : 4

DIMENSIONS ARE IN INCHES TOLERANCES: DECIMAL: X.X ± 0.1250 X.XX ± 0.0625 X.XXX ± 0.0313 ANGULAR: ± 1° FRACTIONAL ± 1/16"	DRAWN SMB	NAME SMB	DATE 8/31/15	 TICO/TERMINAL SERVICE 66 CYPRESS RIDGE DR. RIDGELAND, SC 29936 (843) 717-2226	
	CHECKED	APPROVED	TITLE: ASSEMBLY, CAB HEATER		
	DO NOT SCALE DRAWING				SIZE B
	INTERPRET GEOMETRIC TOLERANCING PER: ASME 14.5M-1994	THE SUBJECT MATTER SHOWN AND DESCRIBED IN THIS DRAWING AND ANY OTHER INFORMATION ADVANCED IN CONNECTION THEREWITH, IS PROPRIETARY PROPERTY AND IS TO BE HELD IN STRICT CONFIDENCE BY YOU. ALL RIGHTS TO ANY INVENTIONS, DESIGNS, TRADE MARKS, TRADE NAMES AND COPYRIGHTS DISCLOSED ARE RESERVED TO TICO TERMINAL SERVICES, INC.			DWG. NO. 72550-K1
MATERIAL	FINISH	THICKNESS	REV	SCALE: 1:8	SHEET 1 OF 1

TICO PRO-SPOTTER

S/N:	HEATER ASSEMBLY, QSB/ISB, ACC	72550
-------------	--------------------------------------	--------------

ITEM	PART #	QTY/M	DESCRIPTION
	720853-A1	REF	ASSEMBLY, HEATER, CAB, ACC
	62213	REF	REWORK, ENGINE, HEATER/DEF CONNECTOR (ISB & QSB-IV)
	72550	REF	INSTALLATION, HEATER
1	91722-34	1	MODULE, HEATER ACC
2	91722-36	1	ASSEMBLY, PLENUM, CABLE CONTROL
3	91722-16	1	ADAPTER, HOSE, 3" TO 2-1/2"
NOT SHOWN	91722-6	2 FT	HOSE, ULTRA SMOOTH, 2-1/2" I.D.
NOT SHOWN	20337	2	CLAMP, WORMGEAR, HOSE LINER, 2 1/2"
4	91722-26	2.88 FT	HOSE, FLEX, 3"
	91722-26	1.75 FT	HOSE, FLEX, 3"
	91722-26	1.00 FT	HOSE, FLEX, 3"
5	24120	6	CLAMP, HOSE, 3"
NOT SHOWN	42299	3	CLAMP, WORMGEAR, HOSE LINER, 3"
6	91722-4	6 FT	HOSE, 2" FLEX
	91722-4	5 FT	HOSE, 2" FLEX
7	42157	4	CLAMP, WORMGEAR, HOSE LINER, 2"
NOT SHOWN	42149	2	CLAMP, WORMGEAR, LINER, 5/8" HOSE
8	91783	1	MANIFOLD, DEFROSTER, LEFT-HAND
9	80272	2	SCREW, WOOD, # 10 x 3 LONG
10	80302	2	WASHER, FINISHING, 1/4
11	91828	1	MANIFOLD, DEFROSTER, RIGHT-HAND, ACC
12	82392	2	BOLT, HEX, 1/4-20 x 1 1/2 LONG
13	80129	6	WASHER, FENDER, 1/4-20 x 1 1/4
14	80303	3	GROMMET, RUBBER, 1/2 x 5/8 x 5/16 HOLE
15	85089	2	WASHER, FLAT, 1/4
16	85023	2	NUT, LOCK, NYLON, 1/4"-20
17	91722-13	2	LOUVER, BALL, NO ADAPTER, 2-1/2"
NOT SHOWN	91722-14	2	ADAPTER, HOSE, BALL LOUVER, 2"
18	91722-15	2	RING, TRIM, LOUVER
19	80262	2	SCREW, WOOD, 5-20 x 3/4 LONG
20	91722-18	1	LOUVER, DOWNDRAFT, FIXED, 3"
21	80262	2	SCREW, WOOD, 5-20 x 3/4 LONG
22	91722-17	1	ADAPTER, HOSE, FLANGED, 3"
23	80262	4	SCREW, WOOD, 5-20 x 3/4 LONG
24	920011	1	FILTER, HEATER/AC, PERMATRON, 20 1/2 X 8
NOT SHOWN	920001	1	VALVE, HEATER FLOW CONTROL, INVERTED
NOT SHOWN	91921	1	MAT, HEATER
NOT SHOWN	12067	1	BRACKET, STANDOFF (HEATER LINES)

K	01/22/2016	PW		1 OF 1
---	------------	----	--	--------