

DIMENSIONS ARE IN INCHES
 TOLERANCES:
 DECIMAL:
 X.X ± 0.06
 X.XX ± 0.03
 X.XXX ± 0.005
 ANGULAR:
 ± 0.5°
 FRACTIONAL ± 1/32"

	NAME	DATE
DRAWN	MPC	08/23/2017
CHECKED	---	---
APPROVED	---	---



TICO MANUFACTURING
 66 CYPRESS RIDGE DR.
 RIDGELAND, SC 29936
 (843) 717-2226

TITLE: ASSEMBLY, EXHAUST SYSTEM,
 65" DOOR, ISB 2013

MATERIAL
 N/A
 FINISH
 N/A
 THICKNESS
 N/A

THE SUBJECT MATTER SHOWN AND DESCRIBED IN THIS DRAWING AND ANY OTHER INFORMATION ADVANCED IN CONNECTION THEREWITH, IS PROPRIETARY PROPERTY AND IS TO BE HELD IN STRICT CONFIDENCE BY YOU. ALL RIGHTS TO ANY INVENTIONS, DESIGNS, TRADE MARKS, TRADE NAMES AND COPYRIGHTS DISCLOSED ARE RESERVED TO TICO TERMINAL SERVICES, INC.

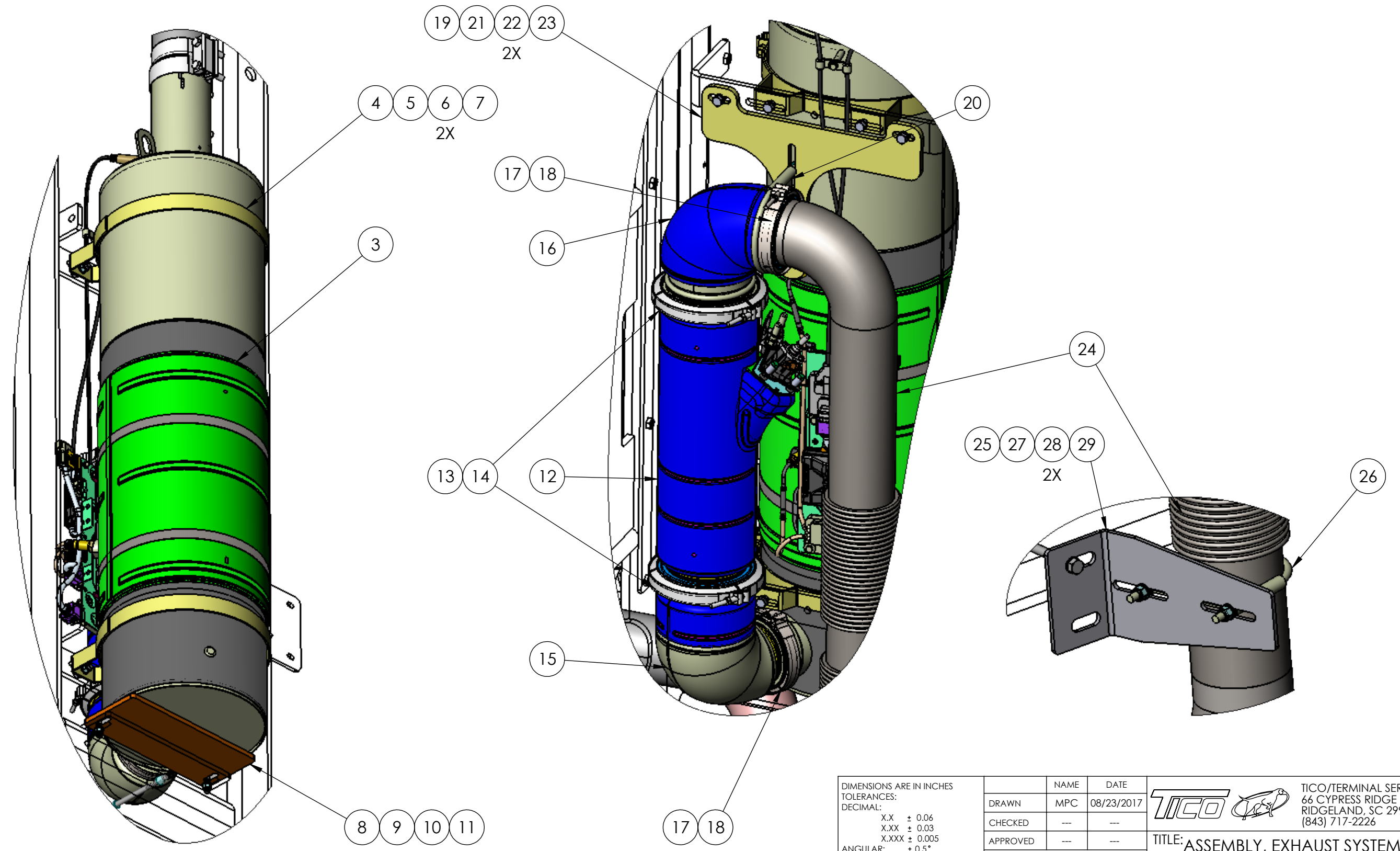
SIZE	DWG. NO.	REV
B	72458-C1	C


SCALE: 1:16 WEIGHT: --- SHEET 1 OF 3

8 7 6 5 4 3 2 1

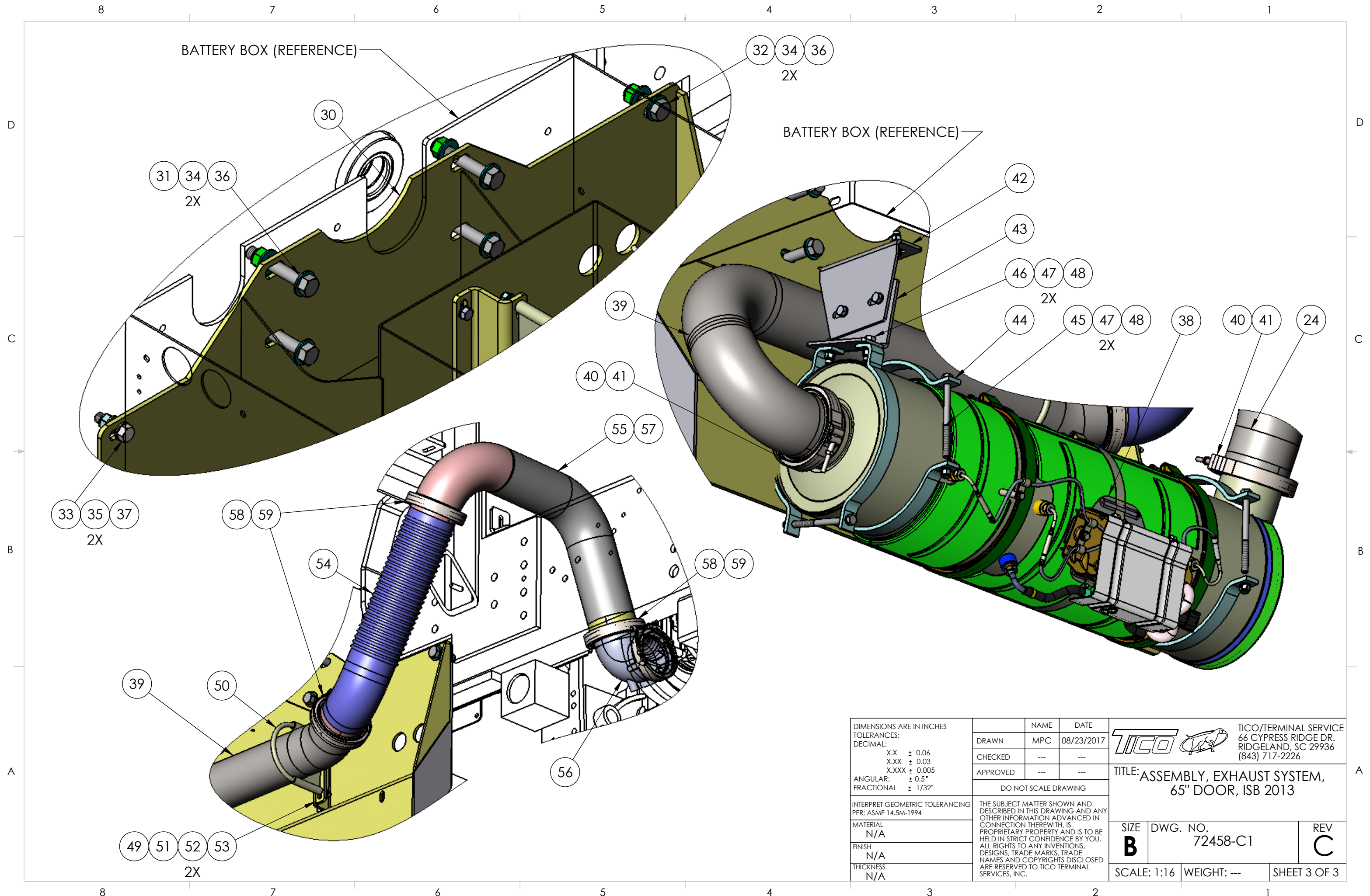
D
C
B
A

D
C
B
A



DIMENSIONS ARE IN INCHES TOLERANCES: DECIMAL: X.X ± 0.06 X.XX ± 0.03 X.XXX ± 0.005 ANGULAR: ± 0.5° FRACTIONAL ± 1/32"	NAME	DATE	 TICO/TERMINAL SERVICE 66 CYPRESS RIDGE DR. RIDGELAND, SC 29936 (843) 717-2226	
	DRAWN	MPC		08/23/2017
	CHECKED	---		---
	APPROVED	---		---
DO NOT SCALE DRAWING			TITLE: ASSEMBLY, EXHAUST SYSTEM, 65" DOOR, ISB 2013	
INTERPRET GEOMETRIC TOLERANCING PER: ASME 14.5M-1994	THE SUBJECT MATTER SHOWN AND DESCRIBED IN THIS DRAWING AND ANY OTHER INFORMATION ADVANCED IN CONNECTION THEREWITH, IS PROPRIETARY PROPERTY AND IS TO BE HELD IN STRICT CONFIDENCE BY YOU. ALL RIGHTS TO ANY INVENTIONS, DESIGNS, TRADE MARKS, TRADE NAMES AND COPYRIGHTS DISCLOSED ARE RESERVED TO TICO TERMINAL SERVICES, INC.		SIZE B	
MATERIAL N/A	DWG. NO. 72458-C1		REV C	
FINISH N/A	SCALE: 1:16		WEIGHT: ---	
THICKNESS N/A	SHEET 2 OF 3			

8 7 6 5 4 3 2 1



DIMENSIONS ARE IN INCHES
TOLERANCES:
DECIMAL:
X.X ± 0.06
X.XX ± 0.03
X.XXX ± 0.005
ANGULAR:
± 0.5°
FRACTIONAL ± 1/32"

INTERPRET GEOMETRIC TOLERANCING PER: ASME 14.5M-1994

MATERIAL
N/A

FINISH
N/A

THICKNESS
N/A

	NAME	DATE
DRAWN	MPC	08/23/2017
CHECKED	---	---
APPROVED	---	---



TICO/TERMINAL SERVICE
66 CYPRESS RIDGE DR.
RIDGELAND, SC 29936
(843) 717-2226

TITLE: ASSEMBLY, EXHAUST SYSTEM,
65" DOOR, ISB 2013

SIZE	DWG. NO.	REV
B	72458-C1	C

SCALE: 1:16 WEIGHT: --- SHEET 3 OF 3

TICO PRO-SPOTTER					
			ASSEMBLY, EXHAUST SYSTEM, 65" DOOR, ISB 2013	72458	
ITEM	PART #	QTY	DESCRIPTION	NOTE	
30	62153-1	1	MOUNT BRACKET, DPF		
31	82496	4	BOLT, HEX HEAD, 5/8-11 X 3-3/4 LONG		
32	82419	1	BOLT, HEX HEAD, 5/8-11 X 2 LONG		
33	82407	1	BOLT, HEX HEAD, 1/2-13 X 2 LONG		
34	85094	10	WASHER, FLAT, 5/8		
35	85093	2	WASHER, FLAT, 1/2		
36	85028	5	LOCKNUT, NYLON, 5/8-11		
37	85027	1	LOCKNUT, NYLON, 12-13		
38	62008	1	DPF, AFTERTREATMENT		
39	62150	1	EXHAUST TUBE, FLEX TUBE TO DPF		
40	40766	2	CLAMP, V-BAND, 4-5/8"		
41	61762	2	SEAL		
42	62409	1	BRACKET, SUPPORT, BATTERY BOX, DPF		
43	62416	1	BRACKET, SUPPORT, BATTERY BOX, DPF (BOTTOM)		
44	40393-1	6	BRACKET, AIR TANK		
45	82548	3	BOLT, HEX HEAD, 3/8-16 X 5 LONG (AIR BRACKETS)		
46	82383	9	BOLT, HEX HEAD, 3/8-16 X 1-1/4 LONG (BRACKETS TO PLATE & BOX)		
47	85091	24	WASHER, FLAT, 3/8		
48	85025	12	LOCKNUT, NYLON, 3/8-16		
49	12690	1	BRACKET, TUBE SUPPORT		
50	42243	1	CLAMP, SADDLE, 4-1/2"		
51	82383	2	BOLT, HEX HEAD, 3/8-16 X 1-1/4 LONG		
52	85091	4	WASHER, FLAT, 3/8		
53	85025	2	LOCKNUT, NYLON, 3/8-16		
54	61992	1	TUBE, FLEX (TURBO TO DPF)		
55	62212	1	TUBE, TURBO TO FLEX TUBE		
56	61744	1	ELBOW, TURBO		
57	42270	1	FITTING, PLUG, HEX HEAD SOCKET, M20 X 1-1/2 LONG		
58	40766	3	CLAMP, V-BAND, 4-5/8"		
59	61762	3	SEAL		
NOT SHOWN	61741	1	MODULE SUPPLY, ISB 2010		
NOT SHOWN	40066	1	CLAMP, MUFFLER, 4"		
NOT SHOWN	61883	3	BRACKET, STANDOFF		
NOT SHOWN	62205	1	BRACKET, STRAIGHT, SCR WIRING HOLD DOWN		
NOT SHOWN	62206	1	BRACKET, STANDOFF, 1 X 1-3/4 X 7		
NOT SHOWN	62022	1	WIRE HARNESS, AFTERTREATMENT, ISB 2013		
REV	DATE	BY		SHEET	2
C	08/23/2017	MPC		OF	2

TICO MANUFACTURING - RIDGELAND, SC 29936