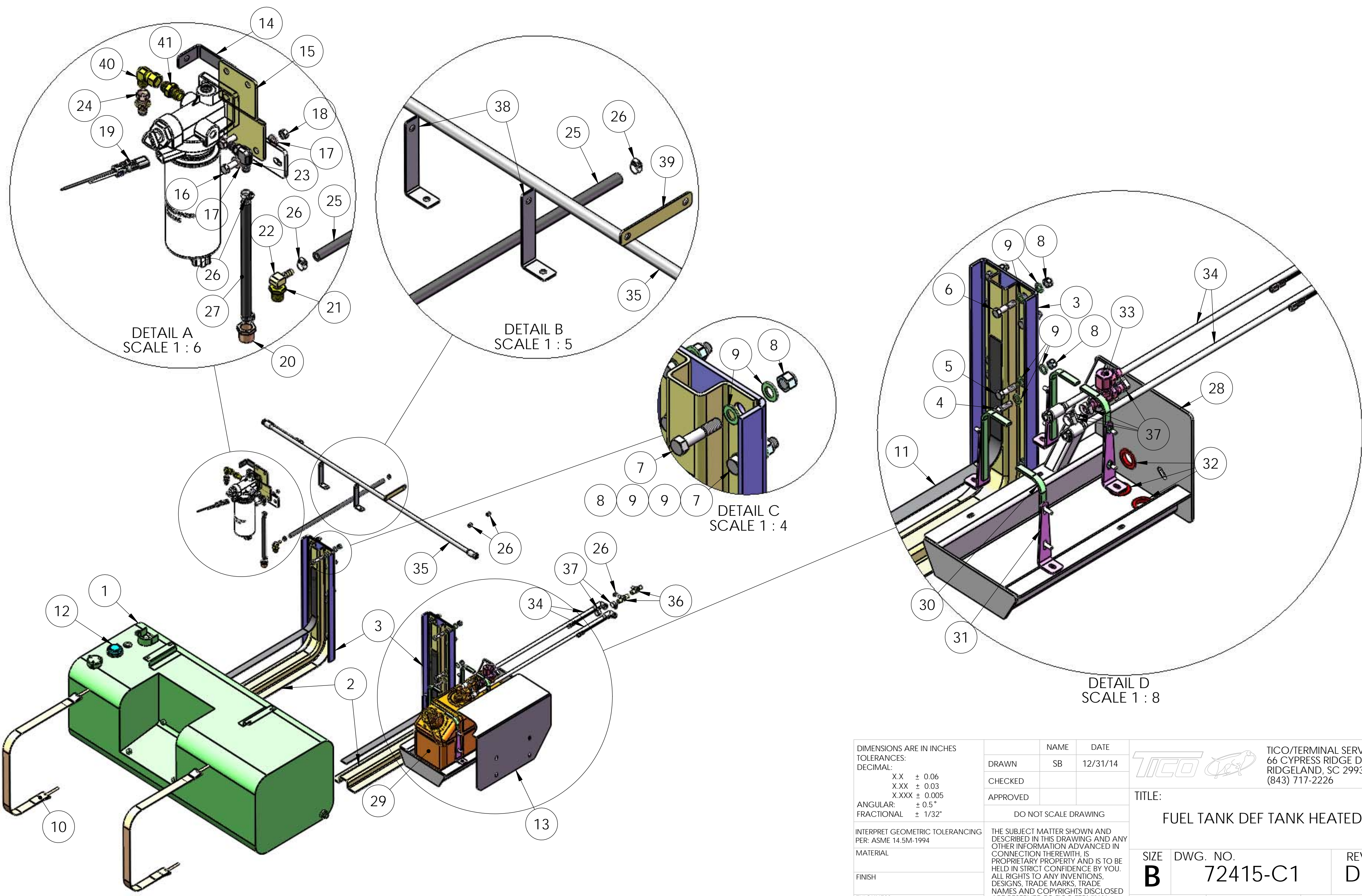



8 7 6 5 4 3 2 1

D
C
B
A

D
C
B
A



DIMENSIONS ARE IN INCHES TOLERANCES: DECIMAL: X.X ± 0.06 X.XX ± 0.03 X.XXX ± 0.005 ANGULAR: ± 0.5° FRACTIONAL ± 1/32"	DRAWN SB	NAME SB	DATE 12/31/14	 TICO/TERMINAL SERVICE 66 CYPRESS RIDGE DR. RIDGELAND, SC 29936 (843) 717-2226
	CHECKED			
	APPROVED			
	DO NOT SCALE DRAWING			
INTERPRET GEOMETRIC TOLERANCING PER: ASME 14.5M-1994	THE SUBJECT MATTER SHOWN AND DESCRIBED IN THIS DRAWING AND ANY OTHER INFORMATION ADVANCED IN CONNECTION THEREWITH, IS PROPRIETARY PROPERTY AND IS TO BE HELD IN STRICT CONFIDENCE BY YOU. ALL RIGHTS TO ANY INVENTIONS, DESIGNS, TRADE MARKS, TRADE NAMES AND COPYRIGHTS DISCLOSED ARE RESERVED TO TICO TERMINAL SERVICES, INC.			TITLE: FUEL TANK DEF TANK HEATED
MATERIAL	SIZE B	DWG. NO. 72415-C1	REV D1	SCALE: 1:12
FINISH				SHEET 1 OF 1
THICKNESS				

8 7 6 5 4 3 2 1

TICO PRO-SPOTTER				
S/N		FUEL TANK SYSTEM, ISB-2013		72415
ITEM	PART #	QTY/M	DESCRIPTION	TASK
	72415-C1	REF	ASSEMBLY, FUEL TANK SYSTEM	
1	20289	1	TANK, FUEL, 65 GALLON	
2	20175	2	BRACKET, TANK MOUNT	
3	12406	2	BRACKET, CHANNEL, BACKING	
4	82396	8	BOLT, HEX, 1/2-13 X 1 1/2 LG	
5	82407	8	BOLT, HEX, 1/2-13 X 1 3/4 LG	
6	82418	4	BOLT, HEX, 1/2-13 X 2 LG	
7	82429	4	BOLT, HEX, 1/2-13 X 2 1/4 LG	
8	85027	20	LOCKNUT, NYLOCK, 1/2-13	
9	85093	40	WASHER, FLAT, 1/2 HARD	
10	20179	2	STRAP, HOLDING, FUEL TANK	
11	20171	2	PAD, RUBBER, TANK BRACKET, 1/8 X 1 1/2	
12	20169	1	SENDER, FUEL, NO FLOAT, 240-33 OHM	
13	20086-7	1	COVER, DEF TANK	
14	61883	4	BRACKET, STANDOFF	
	61001	REF	FILTER, FUEL/PRIMARY	
15	12065-1	1	BRACKET, FUEL FILTER	
16	82405	2	BOLT, HEX, 3/8-16 X 1 3/4 LG, (BRACKET TO CAB BAR)	
17	85113	8	WASHER, FLAT, 3/8	
18	85036	4	LOCKNUT, CROWNLOCK, 3/8-16, COARSE	
19	61672	1	HARNESS, FUEL FILTER	
20	42053	1	FITTING, REDUCER, BRASS, 3/4 NPT X 3/8 NPT, (SUPPLY)	
21	42090	1	FITTING, REDUCER, BRASS, 1/2 NPT X 1/4 NPT, (RETURN)	
22	42191	1	FITTING, 90°, BRASS, 1/4 NPT X 5/16 BARB, (RETURN)	
23	42080	2	FITTING, 90°, #6 JIC X 12mm MALE	
24	42146	2	FITTING, 3/8 BARB X #6 JIC, SWIVEL	
NOT SHOWN	42269	1	FITTING, HOSE, #06 HOSE, BARB, (FUEL INLET)	
25	41214	32 IN	HOSE, FUEL, 3/8 ID, SAE 30R9	
26	24110	12	CLAMP, HOSE WORM GEAR, 1/4 TO 5/8	
REV	DATE	BY		SHEET
				1 OF 2

