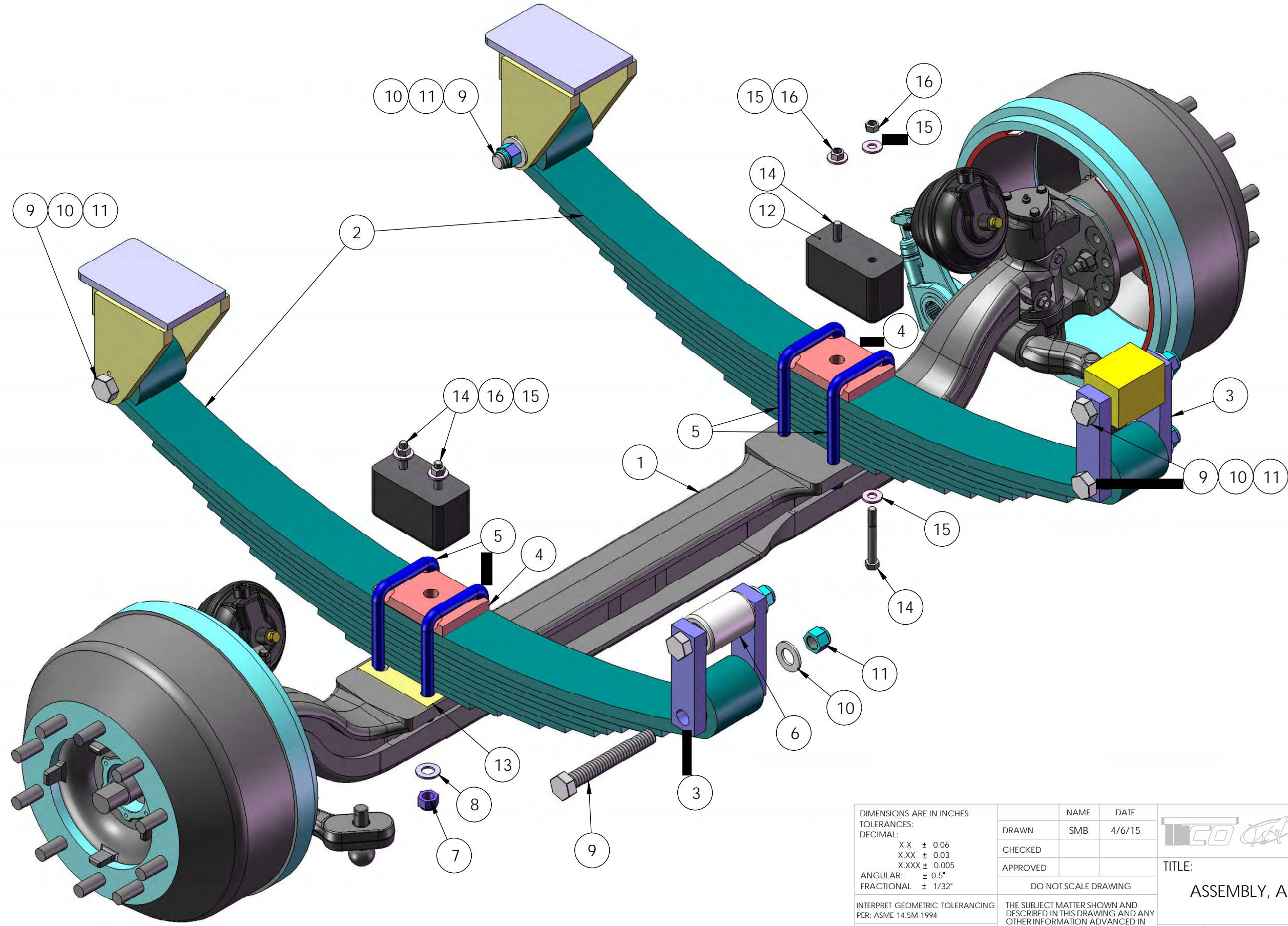



8 7 6 5 4 3 2 1

D  
C  
B  
A

D  
C  
B  
A



DIMENSIONS ARE IN INCHES		NAME	DATE	 TICO/TERMINAL SERVICE 66 CYPRESS RIDGE DR. RIDGELAND, SC 29936 (843) 717-2226			
TOLERANCES:		DRAWN	SMB		4/6/15		
DECIMAL:		CHECKED					
X.X ± 0.06 X.XX ± 0.03 X.XXX ± 0.005 ANGULAR: ± 0.5° FRACTIONAL ± 1/32"		APPROVED					
INTERPRET GEOMETRIC TOLERANCING PER: ASME 14.5M-1994		DO NOT SCALE DRAWING			TITLE: <b>ASSEMBLY, AXLE FRONT STEER</b>		
MATERIAL		THE SUBJECT MATTER SHOWN AND DESCRIBED IN THIS DRAWING AND ANY OTHER INFORMATION ADVANCED IN CONNECTION THEREWITH IS PROPRIETARY PROPERTY AND IS TO BE HELD IN STRICT CONFIDENCE BY YOU. ALL RIGHTS TO ANY INVENTIONS, DESIGNS, TRADE MARKS, TRADE NAMES AND COPYRIGHTS DISCLOSED ARE RESERVED TO TICO TERMINAL SERVICES, INC.			SIZE <b>B</b>	DWG. NO. <b>72339-B1</b>	REV <b>B1</b>
FINISH		SCALE: 1:6			SHEET 1 OF 1		
THICKNESS							

8 7 6 5 4 3 2 1

**TICO PRO-SPOTTER**

**S/N:** **AXLE, FRONT STEER , FF961, 6 LEAF SPRING** **72339**

ITEM	PART #	QTY/M	DESCRIPTION	TASK
	72339-B1	REF	ASSEMBLY, AXLE FRONT STEER	
1	12705	1	AXLE, STEER, FF961, 285mm, 69" KP	
1	12425-1	2	SPRING, FRONT-6 LEAF	
	12425-2	2	BUSHING, RUBBER	
2	12425-3	4	BAR, SHACKLE	
3	12425-4	2	PLATE, TOP CLAMP	
4	12425-5	4	U-BOLT	
5	12425-2	2	BUSHING, RUBBER (INSTALLED IN FRAME)	
6	80365	8	NUT, NYLOCK, 3/4-16	
7	85095	8	WASHER, 3/4" HRDN	
8	80364	6	BOLT, HEX, 1-8 UNC X 7 1/4 LG	
9	85097	8	WASHER, 1" HRDN	
10	85031	6	LOCKNUT, NYLOCK, 1"-8	
11	30046	2	PAD, BUMPER	
12	12504	1	SPACER, LH SPRING	
13	82506	4	BOLT, HEX, 1/2-13 X 4 LG	
14	85115	8	WASHER, FLAT, 1/2	
15	85038	4	LOCKNUT, NYLOCK, 1/2-13, GRD 8	
	10677	2	BRAKE CHAMBER, FRONT, 20"	
	12155	2	SLACK ADJUSTER, AUTOMATIC, HALDEX SABA, 5.5 LG	
	12581	2	BRACKET-SLACK ADJUSTER	
	91790	2	SENSOR, ABS	
	91791	2	SLEEVE, CLAMP-ABS SENOR	
	91792	4	CLIP	
			NOTE: TORQUE FRONT "U" BOLT NUTS TO 340 FT/LBS	

REV	DATE	BY	SHEET
C	9/28/2015	HK	1 OF 1