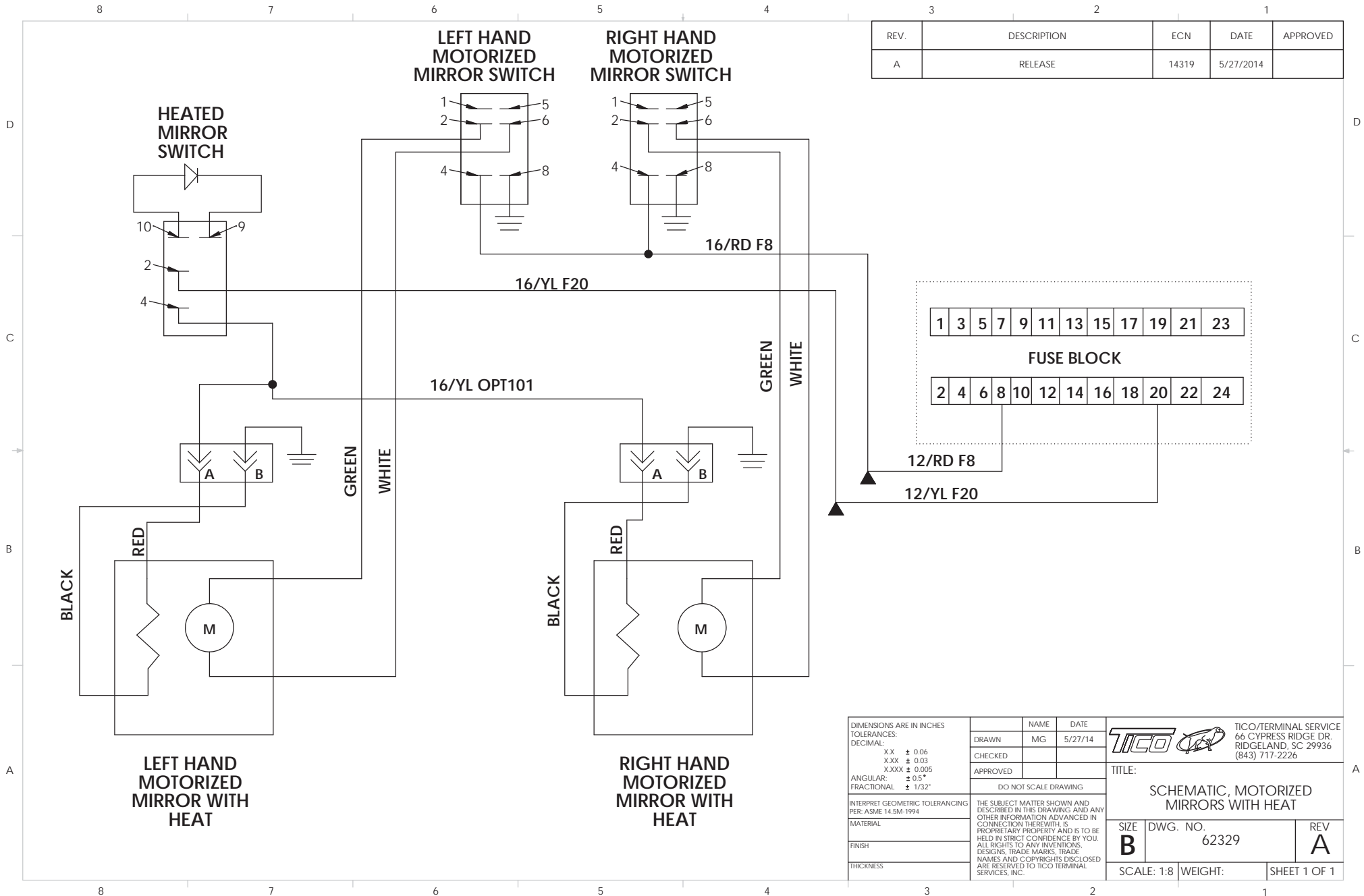


UNFINISHED ARE IN INCHES	DATE	8/20/15	 TICO/PERMANAL SERVICE 66 CYPRESS RIDGE CIR. ROCKLAND, SC 29554 (843) 717-2226
TOLERANCES UNLESS OTHERWISE SPECIFIED:	DRAWN	SSS	
FRACTIONAL .125"	CHECKED		THE SUBJECT MATTER SHOWN AND DESCRIBED IN THE DRAWING AND ANY OTHER INFORMATION CONTAINED HEREIN IS THE PROPERTY OF WECO. ALL RIGHTS TO ANY INVENTIONS, PATENTS, TRADEMARKS, TRADE NAMES, AND COPYRIGHTS DESCRIBED ARE RESERVED TO WECO TOOLING SERVICE, INC.
DECIMAL .005"	APPROVED		
ANGULAR ± 1.0°	PROJECT SCALE DRAWING UNLESS GEOMETRIC TOLERANCING IS SPECIFIED BY A SURVEY		TITLE MIRROR INSTALLATION, WEST COAST
FUNCTIONAL ± .010"	SIZE DWG. NO. D 72291-C1		REV A
SCALE: 1:1 WEIGHT:			SHEET 1 OF 1

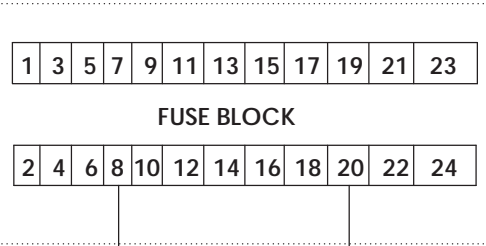
TICO PRO-SPOTTER


S/N: **MIRRORS, MOTORIZED/CONVEX, 122"** **72291**

ITEM	PART #	QTY/M	DESCRIPTION	TASK
	72291-C1	REF	INSTALLATION DRAWING	
	62329	REF	SCHEMATIC, MOTORIZED MIRRORS	
1	50170	1	MIRROR, MOTORIZED, HEATED, LH	
2	90697	2	MIRROR, CONVEX, HEATED	
3	91713	1	STANCHION, MIRROR	
4	50238	6	MOUNT, MIRROR ANGLE	
5	50241	2	BRACKET, MIRROR, UPPER	
6	50243	2	BRACKET, MIRROR, LOWER	
7	80361	12	BOLT, HEX, 1/4-20 NC X 1 LG, SS	
8	80322	6	BOLT, HEX, 1/4-20 NC X 1 1/2 LG, SS	
9	80311	36	WASHER, FLAT, 1/4, SS	
10	80360	18	NUT, NYLOCK, 1/4-20	
11	50242	2	BRACE, HORIZ MIRROR, FWD	
12	50235	2	BRACE, HORIZ MIRROR, AFT	
13	80316	4	BOLT, HEX, 3/8-16 X 1 1/4 LG, SS	
14	80314	26	WASHER, FLAT, 3/8, SS	
15	80320	10	NUT, NYLOCK, 3/8-16, SS	
16	50234	1	LOOP, MIRROR, 11"	
17	50237	1	STABLIZER TUBE, OUTER	
18	50254	1	STABLIZER TUBE, INNER	
19	50255	1	COLLAR, STABLIZER TUBE	
20	50256	1	SET SCREW, COLLAR	
21	80318	2	BOLT, HEX, 3/8-16 X 2 3/4 LG, SS	
22	50250	4	SPRING, COMPRESSION, SS	
23	50239	4	CLAMP, 1"	
24	50240	6	BRACKET, TWISTED	
25	80315	5	BOLT, HEX, 3/8-16 X 1 LG, SS	
26	80313	6	WASHER, FLAT, 5/16, SS	
27	80319	6	NUT, NYLOCK, 5/16-18, SS	
28	60857	4	ISOLATOR, RUBBER	
29	91609	6	ISOLATOR, RUBBER	
REV	DATE	BY		SHEET
				1 OF 2



REV.	DESCRIPTION	ECN	DATE	APPROVED
A	RELEASE	14319	5/27/2014	



DIMENSIONS ARE IN INCHES		NAME	DATE	 TICO/TERMINAL SERVICE 66 CYPRESS RIDGE DR. RIDGELAND, SC 29936 (843) 717-2226	
TOLERANCES:		DRAWN	MG		5/27/14
DECIMAL:		CHECKED			
.XX ± 0.06 .XXX ± 0.03 .XXX ± 0.005		APPROVED			
ANGULAR:		DO NOT SCALE DRAWING			
FRACTIONAL: ± 1/32"		THE SUBJECT MATTER SHOWN AND DESCRIBED IN THIS DRAWING AND ANY OTHER INFORMATION ADVANCED IN CONNECTION THEREWITH, IS PROPRIETARY PROPERTY AND IS TO BE HELD IN STRICT CONFIDENCE BY YOU. ALL RIGHTS TO ANY INVENTIONS, DESIGNS, TRADE MARKS, TRADE NAMES AND COPYRIGHTS DISCLOSED ARE RESERVED TO TICO TERMINAL SERVICES, INC.			
INTERPRET GEOMETRIC TOLERANCING PER: ASME 14.5M-1994		TITLE:			
MATERIAL		SCHEMATIC, MOTORIZED MIRRORS WITH HEAT			
FINISH		SIZE	DWG. NO.	REV	
THICKNESS		B	62329	A	
		SCALE: 1:8	WEIGHT:	SHEET 1 OF 1	