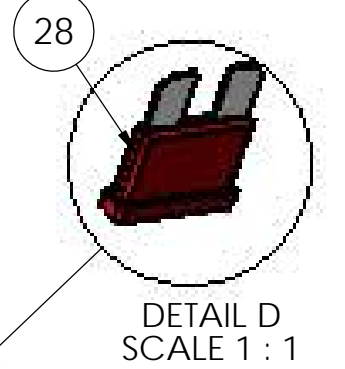
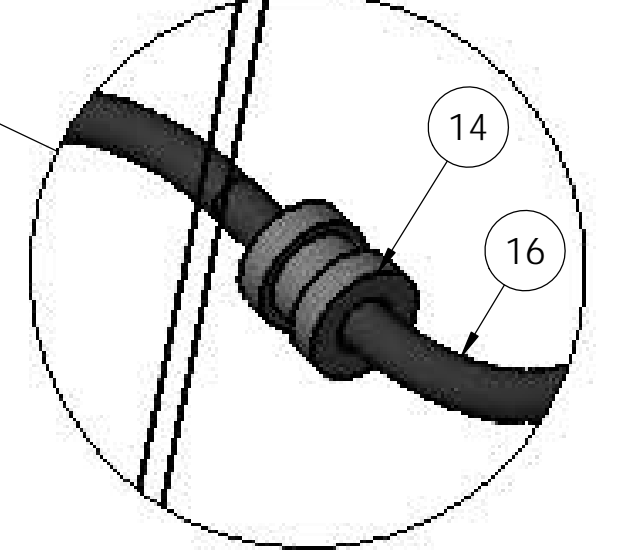
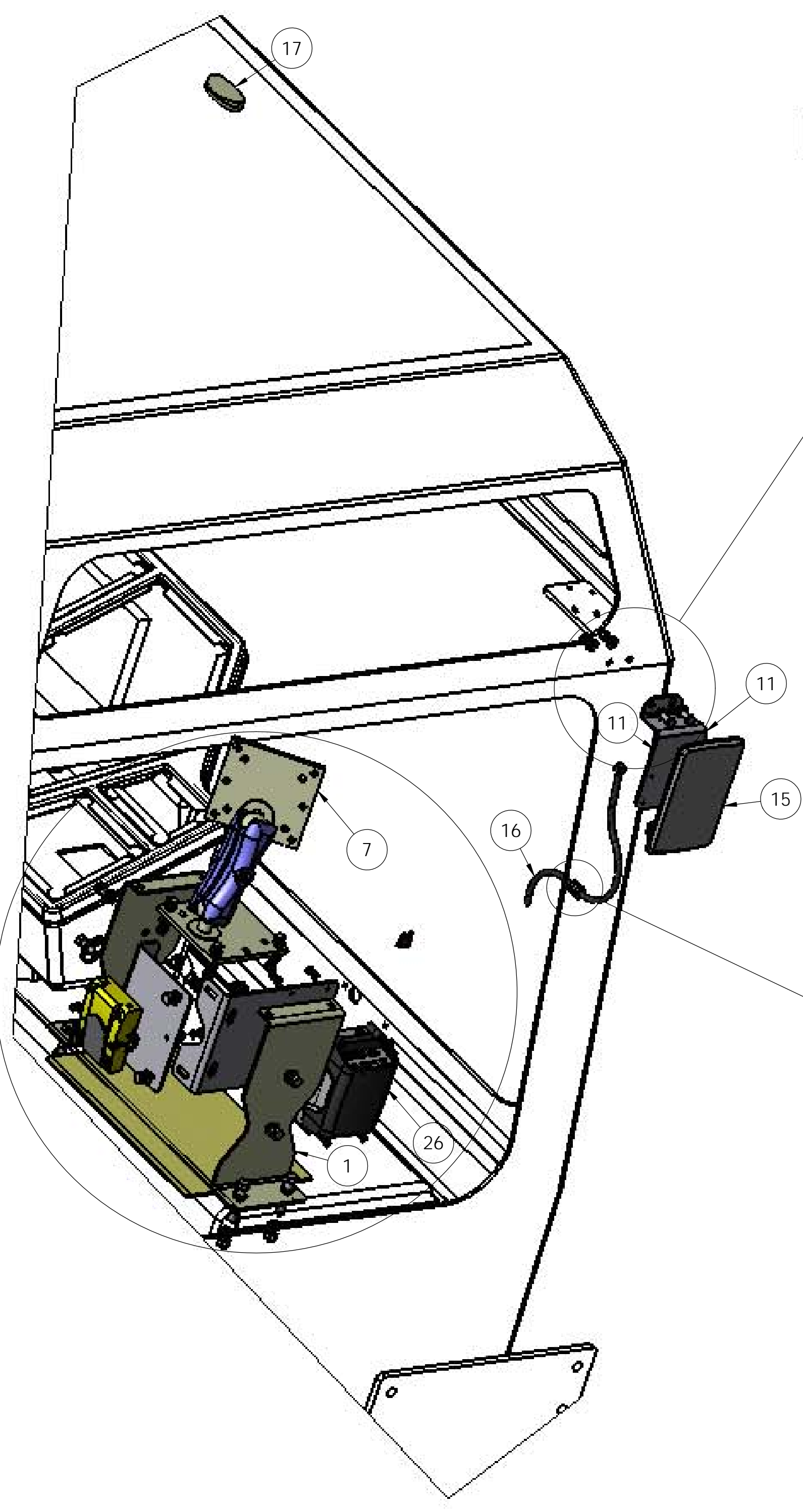


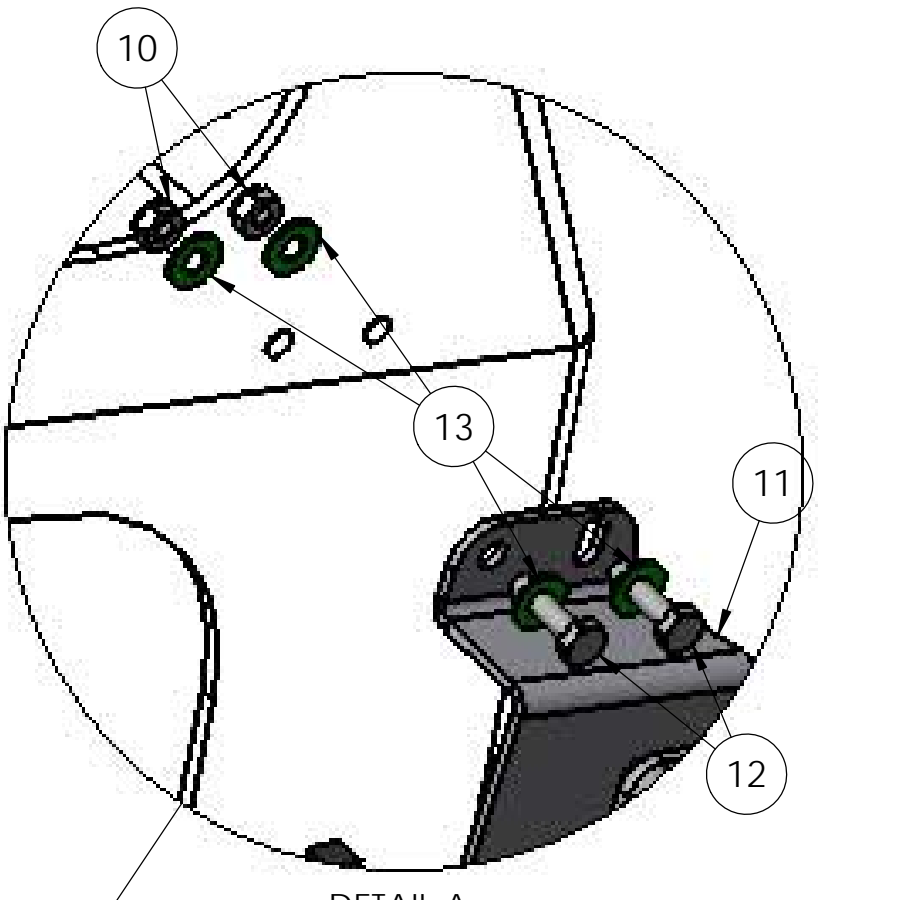
DETAIL C
SCALE 1 : 2



DETAIL D
SCALE 1 : 1



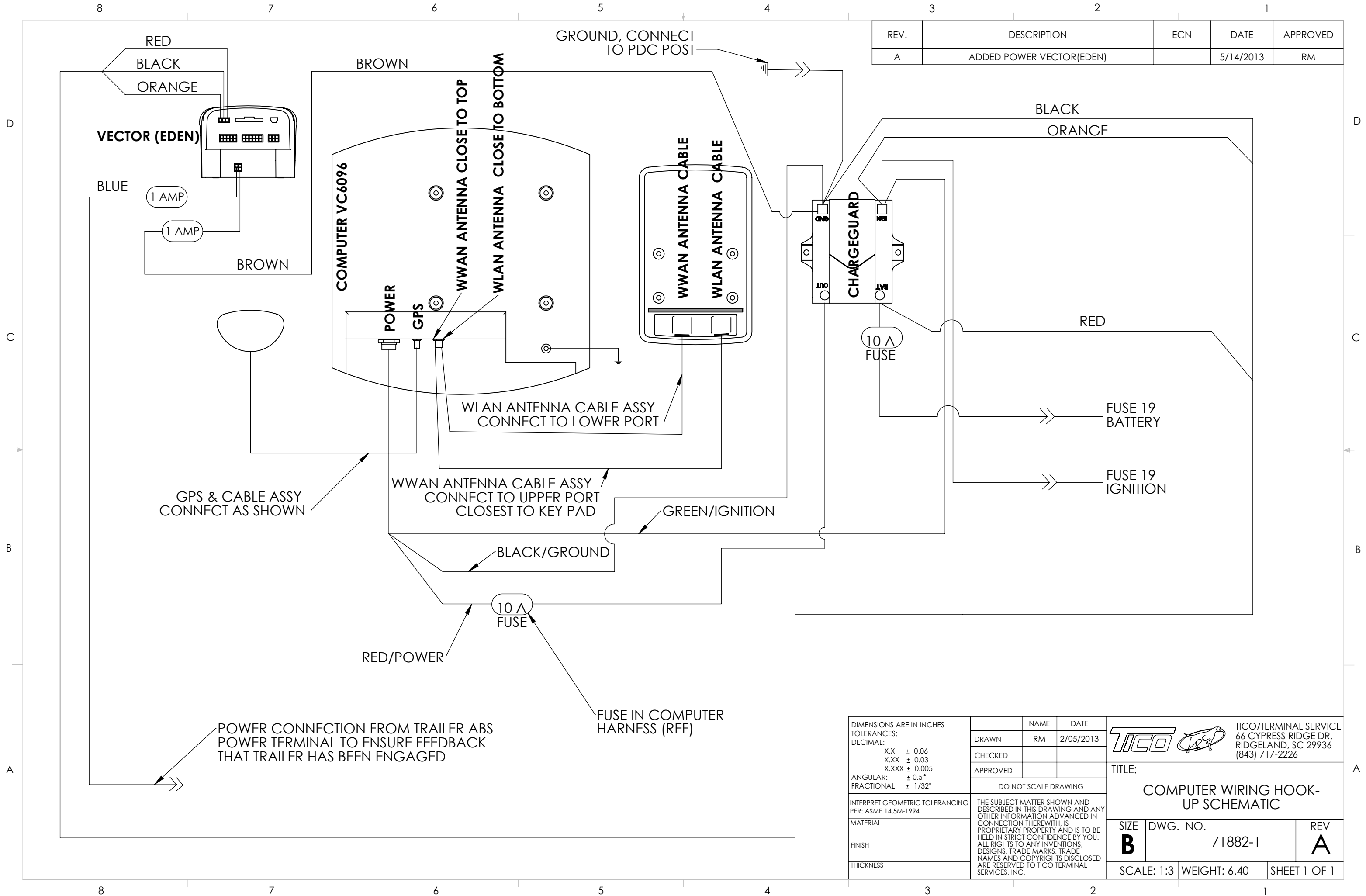
DETAIL B
SCALE 1 : 1




DETAIL A
SCALE 1 : 2

DIMENSIONS ARE IN INCHES		NAME	DATE	TICO/TERMINAL SERVICE 66 CYPRESS RIDGE DR. RIDGELAND, SC 29926 (843) 717-2226	
TOLERANCES:		DRAWN	SMB		7/22/15
DECIMAL:		CHECKED			
X.X ± 0.06		APPROVED		TITLE:	
X.XX ± 0.03				COMPUTER PACKAGE,	
X.XXX ± 0.005				FEDEX	
ANGULAR:				SIZE DWG. NO. REV	
FRACTIONAL ± 0.1°				D 72251-C1	
± 1/32"				SCALE: 1:5 WEIGHT: 1391.34 SHEET 1 OF 1	
INTERPRET GEOMETRIC TOLERANCING PER: ASME Y14.5M-1994		DO NOT SCALE DRAWING			
MATERIAL:		THE SUBJECT MATTER SHOWN AND DESCRIBED IN THE DRAWING AND ANY OTHER INFORMATION ADVANCED IN CONNECTION HEREWITH IS PROPRIETARY PROPERTY AND IS TO BE HELD IN STRICT CONFIDENCE BY YOU. ALL RIGHTS TO ANY INVENTIONS, TRADEMARKS, TRADE NAMES AND COPYRIGHTS DISCLOSED ARE RESERVED TO TICO TERMINAL SERVICES, INC.			
FINISH:					
THICKNESS:					

TICO PRO-SPOTTER				
S/N		COMPUTER PACKAGE, FEDEX		72251
ITEM	PART #	QTY/M	DESCRIPTION	TASK
	72251-C1	REF	COMPUTER PACKAGE, FEDEX	
	12517-3	REF	ASSEMBLY, BASE	
1	12517	2	BRACKET, MOUNT FOR COMPUTER	
2	82416	4	BOLT, HEX, 3/8-16 X 2" LG	
3	85091	8	WASHER, FLAT, 3/8	
4	85025	4	NUT, NYLOK, 3/8-16	
5	12517-1	2	BRACKET, COMPUTER REINFORCEMENT	
6	12517-2A	2	BRACKET, COMPUTER REINFORCEMENT	
7	91671	1	KIT, SWIVEL ARM AND BALL	
8	82370	4	BOLT, HEX, 1/4-20 X 1" LG	
9	85089	8	WASHER, FLAT, 1/4	
10	85023	4	NUT, NYLOK, 1/4-20	
		REF	COMPUTER MOUNTING HARDWARE AND POWER CABLE	
11	91683	1	BRACKET, MOUNT FOR ANTENNA	
12	80361	2	BOLT, HEX, 1/4-20 X 1" LG, SS	
13	80311	2	WASHER, FLAT, 1/4, SS	
14	42132	2	GROMMET, 5/16 ID X 1/2 OD	
15	91673	1	ANTENNA, BOTH WWAN & WLAN	
NOT SHOWN	91676	1	CABLE, ANTENNA TO COMPUTER (WWAN)	
16	91675	1	CABLE, ANTENNA TO COMPUTER (WLAN)	
17	91677	1	ANTENNA, GPS	
18	82371	8	BOLT, HEX, 5/16-18 X 1" LG	
19	85024	8	NUT, NYLOK, 5/16-18	
20	85090	16	WASHER, FLAT, 5/16	
21	91598-1	1	PLATE, BACKUP FOR INSTRUMENTATION	
22	91672	1	TIMER, CHARGE GUARD FOR COMPUTER	
23	80188	6	SCREW, PAN HD, #8-32 X 3/4 LG	
24	80231	8	WASHER, FLAT, #8	
25	80208	6	NUT, NYLOK, #8-32	
26	91678	1	VECTOR, GMS MODULE (EDEN), MODEL V300GWP	
27	80191	4	SCREW, PAN HEAD, #8-32 X 1 1/2 LG	
REV	DATE	BY		SHEET
				1 OF 2
TICO MANUFACTURING - RIDGELAND, SC 29936				



REV.	DESCRIPTION	ECN	DATE	APPROVED
A	ADDED POWER VECTOR(EDEN)		5/14/2013	RM

DIMENSIONS ARE IN INCHES TOLERANCES: DECIMAL: X.X ± 0.06 X.XX ± 0.03 X.XXX ± 0.005 ANGULAR: ± 0.5° FRACTIONAL ± 1/32"	NAME	DATE	 TICO/TERMINAL SERVICE 66 CYPRESS RIDGE DR. RIDGELAND, SC 29936 (843) 717-2226	
	DRAWN	RM		2/05/2013
	CHECKED			
	APPROVED			
INTERPRET GEOMETRIC TOLERANCING PER: ASME 14.5M-1994	DO NOT SCALE DRAWING		TITLE:	
MATERIAL			COMPUTER WIRING HOOK-UP SCHEMATIC	
FINISH	SIZE	DWG. NO.	REV	
THICKNESS	B	71882-1	A	
	SCALE: 1:3	WEIGHT: 6.40	SHEET 1 OF 1	