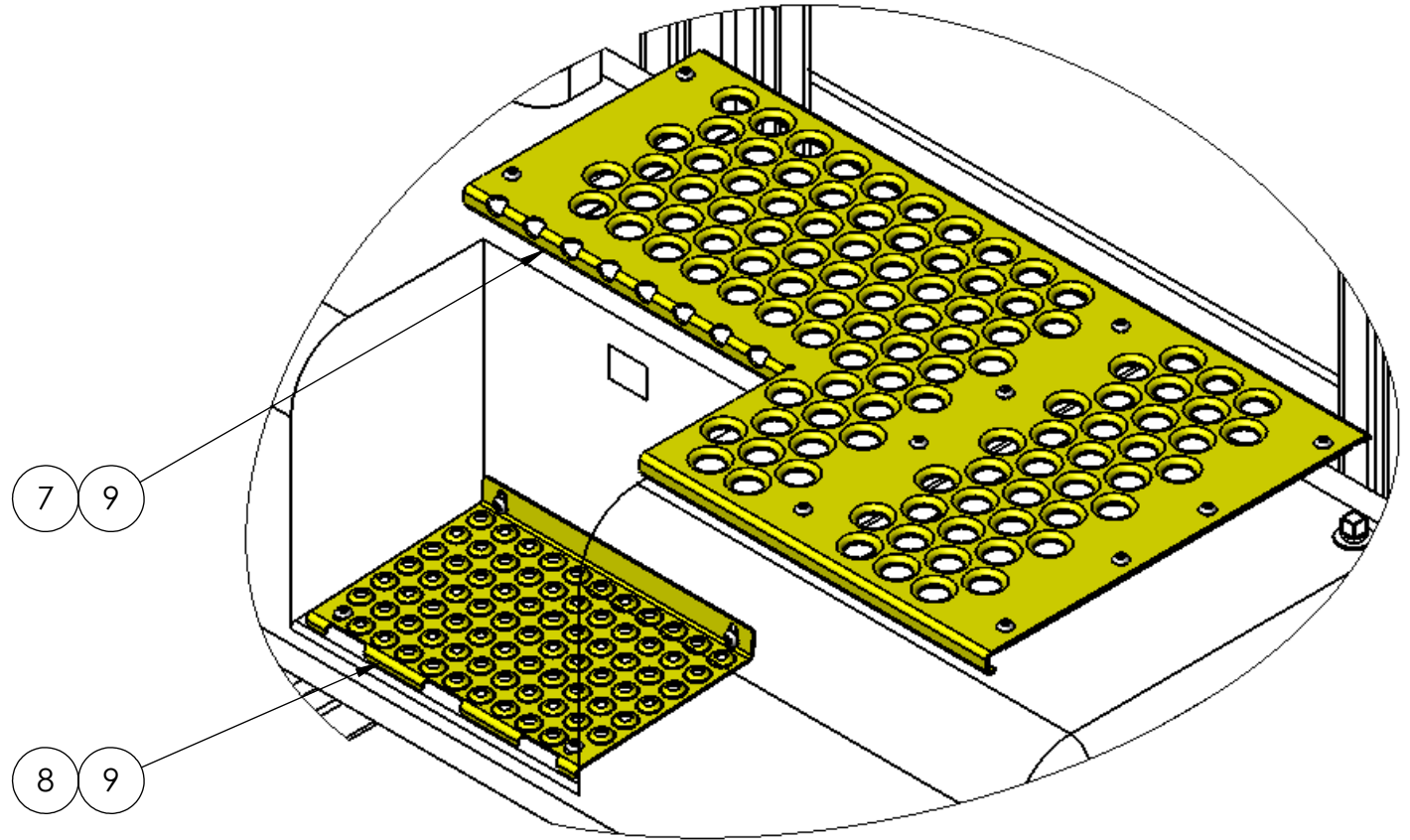
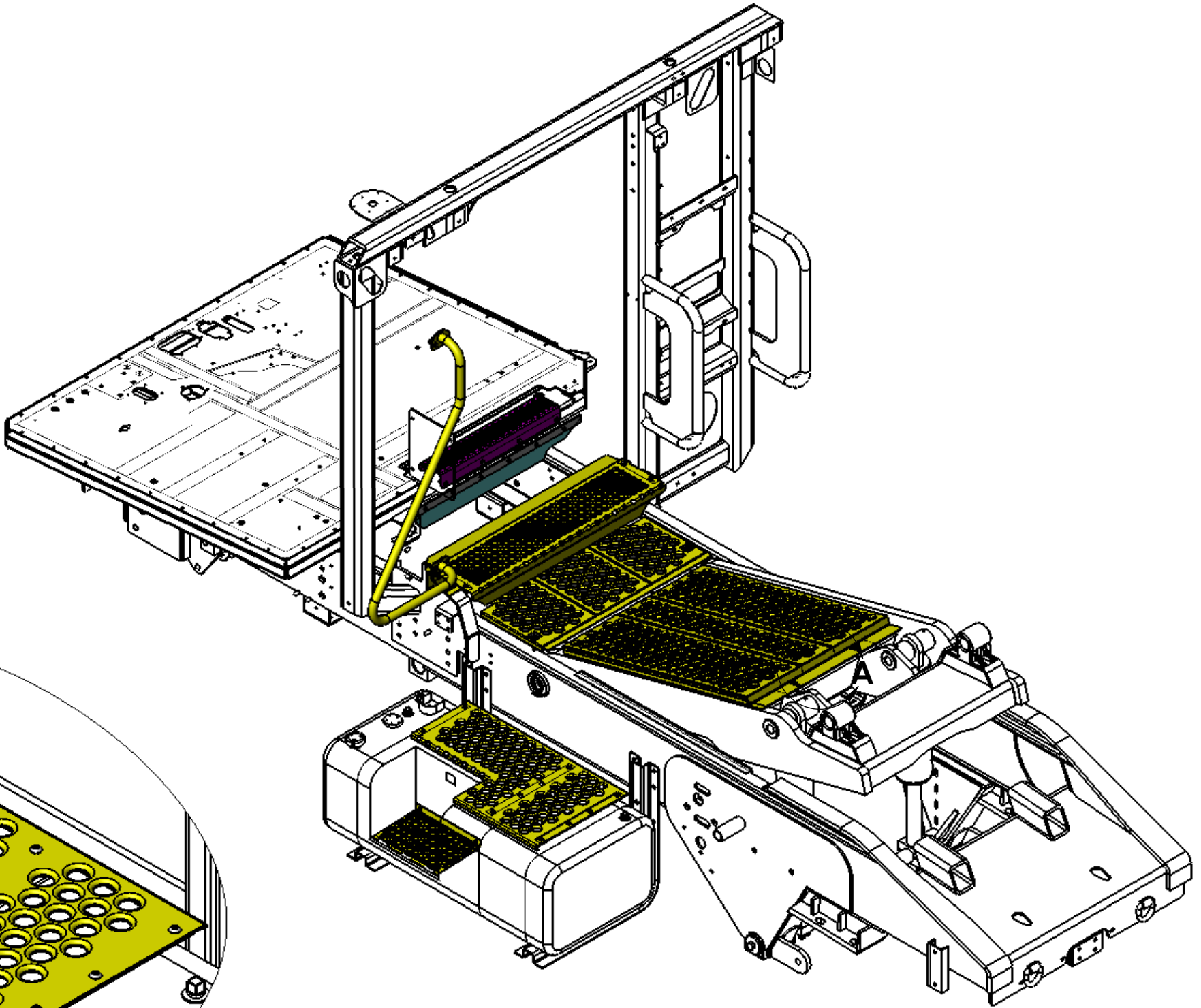
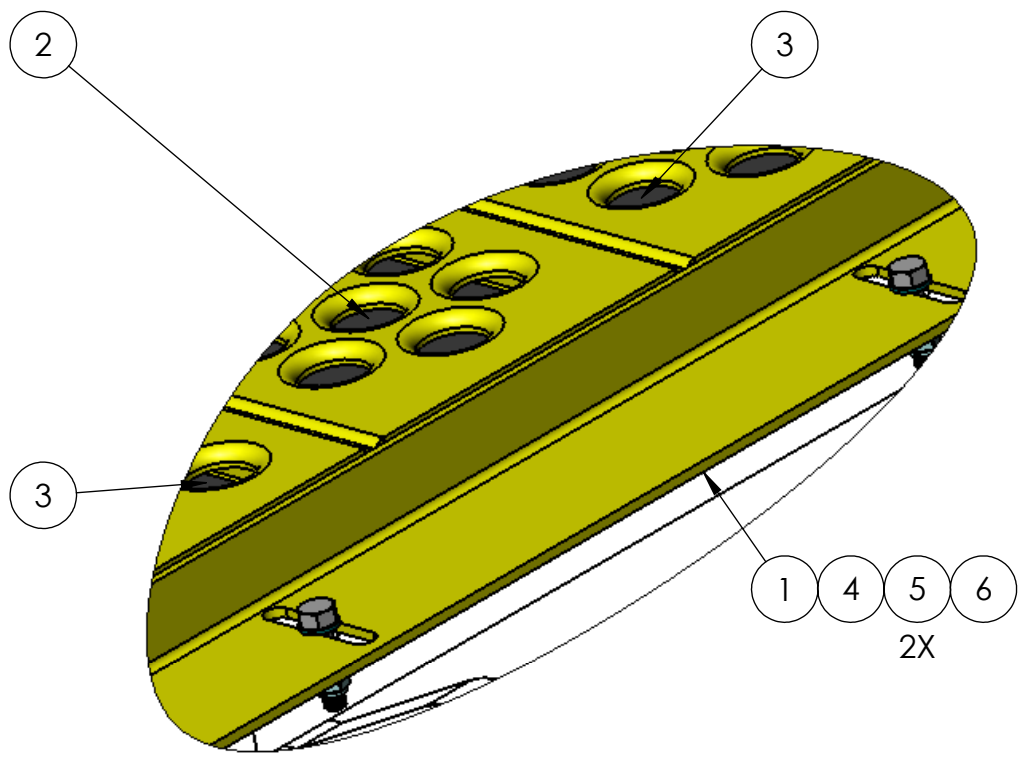



8 7 6 5 4 3 2 1

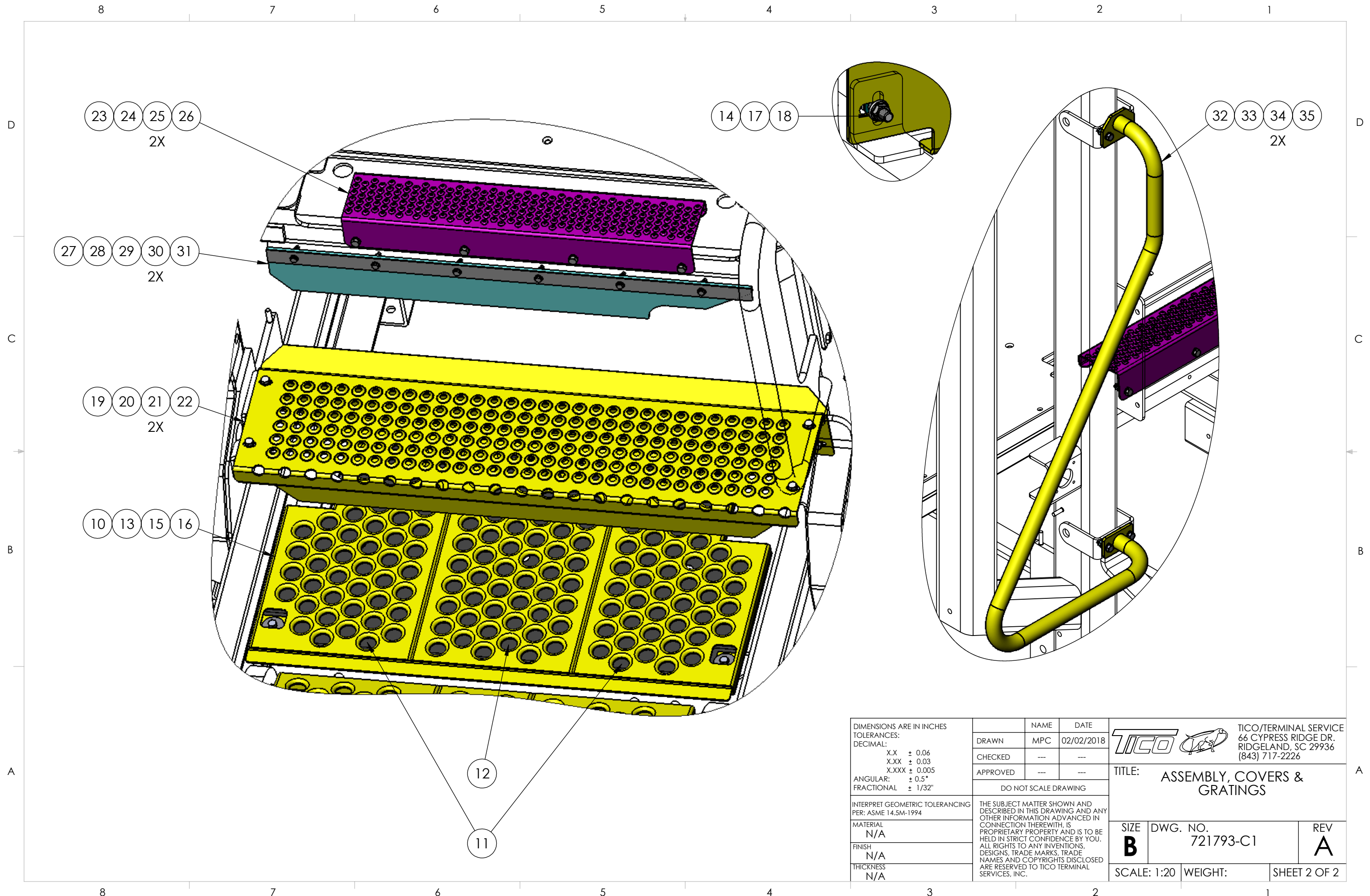
D
C
B
A

D
C
B
A



DIMENSIONS ARE IN INCHES TOLERANCES: DECIMAL: X.X ± 0.06 X.XX ± 0.03 X.XXX ± 0.005 ANGULAR: ± 0.5° FRACTIONAL ± 1/32"	DRAWN	NAME	DATE	 TICO MANUFACTURING 66 CYPRESS RIDGE DR. RIDGELAND, SC 29936 (843) 717-2226
	CHECKED	---	---	
	APPROVED	---	---	
	DO NOT SCALE DRAWING			
MATERIAL	THE SUBJECT MATTER SHOWN AND DESCRIBED IN THIS DRAWING AND ANY OTHER INFORMATION ADVANCED IN CONNECTION THEREWITH, IS PROPRIETARY PROPERTY AND IS TO BE HELD IN STRICT CONFIDENCE BY YOU. ALL RIGHTS TO ANY INVENTIONS, DESIGNS, TRADE MARKS, TRADE NAMES AND COPYRIGHTS DISCLOSED ARE RESERVED TO TICO TERMINAL SERVICES, INC.			
FINISH	SIZE	DWG. NO.	REV	
THICKNESS	B	721793-C1	A	
N/A	SCALE: 1:20	WEIGHT:	SHEET 1 OF 2	

8 7 6 5 4 3 2 1



DIMENSIONS ARE IN INCHES
TOLERANCES:
DECIMAL:
X.X ± 0.06
X.XX ± 0.03
X.XXX ± 0.005
ANGULAR:
FRACTIONAL ± 1/32"

INTERPRET GEOMETRIC TOLERANCING
PER: ASME 14.5M-1994

MATERIAL
N/A


FINISH
N/A

THICKNESS
N/A

	NAME	DATE
DRAWN	MPC	02/02/2018
CHECKED	---	---
APPROVED	---	---

DO NOT SCALE DRAWING

THE SUBJECT MATTER SHOWN AND DESCRIBED IN THIS DRAWING AND ANY OTHER INFORMATION ADVANCED IN CONNECTION THEREWITH, IS PROPRIETARY PROPERTY AND IS TO BE HELD IN STRICT CONFIDENCE BY YOU. ALL RIGHTS TO ANY INVENTIONS, DESIGNS, TRADE MARKS, TRADE NAMES AND COPYRIGHTS DISCLOSED ARE RESERVED TO TICO TERMINAL SERVICES, INC.

TICO  TICO/TERMINAL SERVICE
66 CYPRESS RIDGE DR.
RIDGELAND, SC 29936
(843) 717-2226

TITLE: ASSEMBLY, COVERS & GRATINGS

SIZE B	DWG. NO. 721793-C1	REV A
SCALE: 1:20	WEIGHT:	SHEET 2 OF 2

TICO PRO-SPOTTER					
			ASSEMBLY, COVERS & GRATINGS	721793	
ITEM	PART #	QTY	DESCRIPTION	NOTE	
	721793-C1	REF	ASSEMBLY, COVERS & GRATINGS		
1	30293	1	GRATING, BOOM COVER, OPEN GRIP PATTERN (YELLOW)		
2	30249	1	HEAT SHIELD, 7"		
3	30250	2	HEAT SHIELD, 12"		
4	82383	2	BOLT, HEX HEAD, 3/8-16 X 1-1/2 LONG		
5	85091	4	WASHER, FLAT, 3/8		
6	85025	2	LOCKNUT, NYLON, 3/8-16		
7	300443	1	GRATING, STEP FORWARD, OPEN GRIP PATTERN, TOP		
8	30299	1	GRATING, STEP FORWARD, OPEN GRIP PATTERN, BOTTOM		
9	80378	14	CAPSCREW, BUTTON HEAD, STAINLESS STEEL, 3/8-16 X 1/2 LONG		
10	30352	1	GRATING, TRANSMISSION COVER, OPEN GRIP PATTERN, RAL #2010		
11	30258	2	HEAT SHIELD, TRANSMISSION COVER (OUTER)		
12	30257	1	HEAT SHIELD, TRANSMISSION COVER (MIDDLE)		
13	80384	2	BOLT, HEX HEAD, STAINLESS STEEL, 3/8-16 X 2 LONG		
14	80316	2	BOLT, HEX HEAD, STAINLESS STEEL, 3/8-16 X 1-1/4 LONG		
15	85135	2	LOCKWASHER, FLAT, 3/8		
16	50162-9	2	WASHER, 1-5/8 OD X 13/32 ID X 1/8 THICK		
17	85091		WASHER, FLAT, 3/8		
18	80205	2	NUT, FLANGE, 3/8-16		
19	30302	1	GRATING, CAB STEP UP, CIRCLE PATTERN		
20	80317	4	BOLT, HEX HEAD, STAINLESS STEEL, 3/8-16 X 1-1/2 LONG		
21	85091	8	WASHER, FLAT, 3/8		
22	85025	4	LOCKNUT, NYLON, 3/8-16		
23	121356	1	TREAD PLATE, ENTRY, GALVANIZED		
24	82394	4	BOLT, HEX HEAD, 3/8-16 X 1-1/2 LONG		
25	85091	8	WASHER, FLAT, 3/8		
26	85025	4	LOCKNUT, NYLON, 3/8-16		
27	910534	1	BAFFLE, SOUND DAMPNER, REAR		
28	91926-1	1	PLATE, CLAMP, BAFFLE		
29	82381	6	BOLT, HEX HEAD, 1/4-20 X 1-1/4 LONG (RUBBER TO FLOOR)		
30	85089	12	WASHER, FLAT, 1/4		
31	85023	6	LOCKNUT, NYLON, 1/4-20		
32	12550	1	HANDRAIL, SLOPED, LEFT-HAND (YELLOW)		
33	82383	4	BOLT, HEX HEAD, 3/8-16 X 1-1/4 LONG		
34	85091	8	WASHER, FLAT, 3/8		
35	85025	4	LOCKNUT, NYLON, 3/8-16		
REV	DATE	BY		SHEET	1
A	02/02/2018	MPC		OF	1

TICO MANUFACTURING - RIDGELAND, SC 29936