
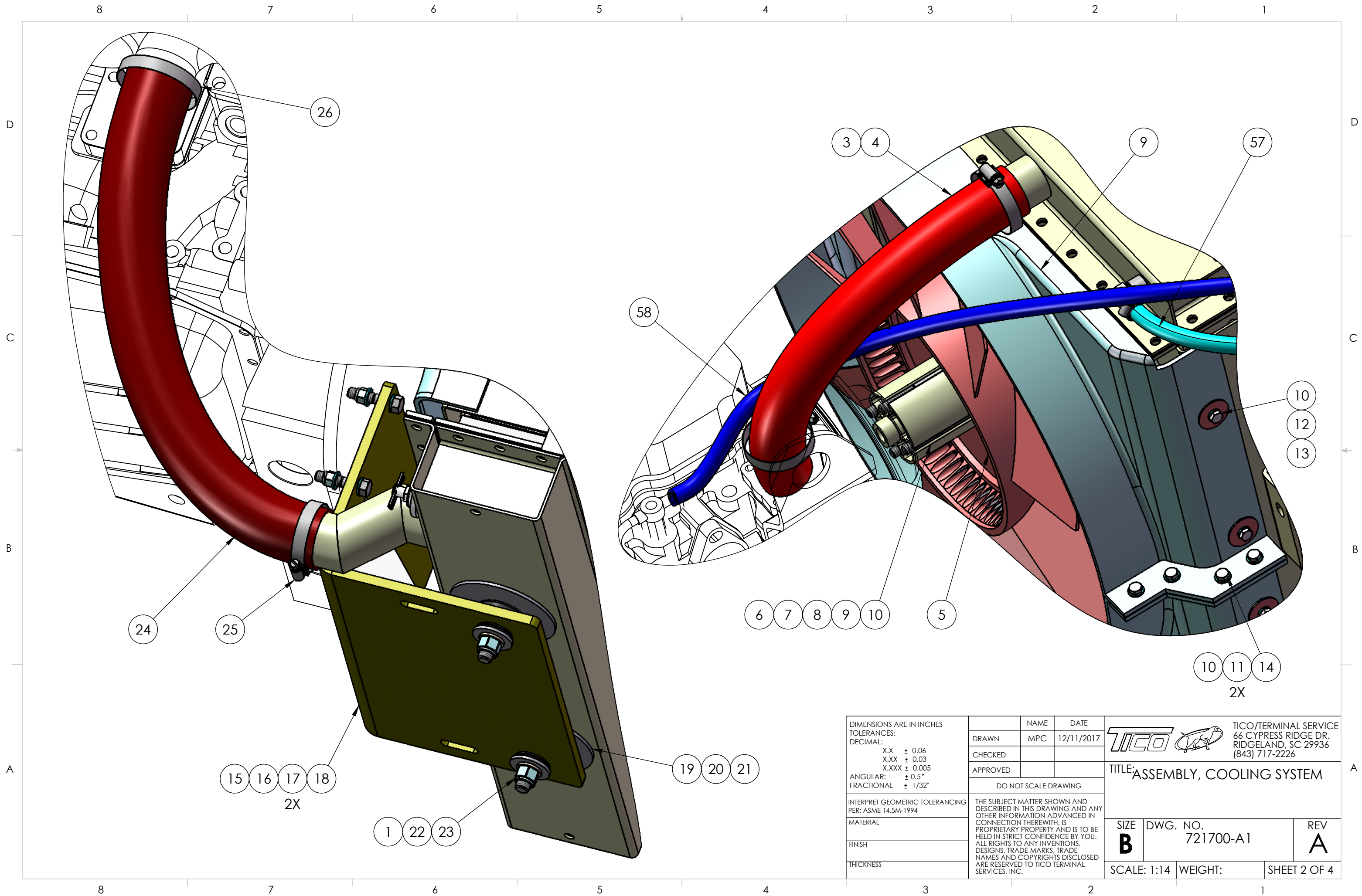

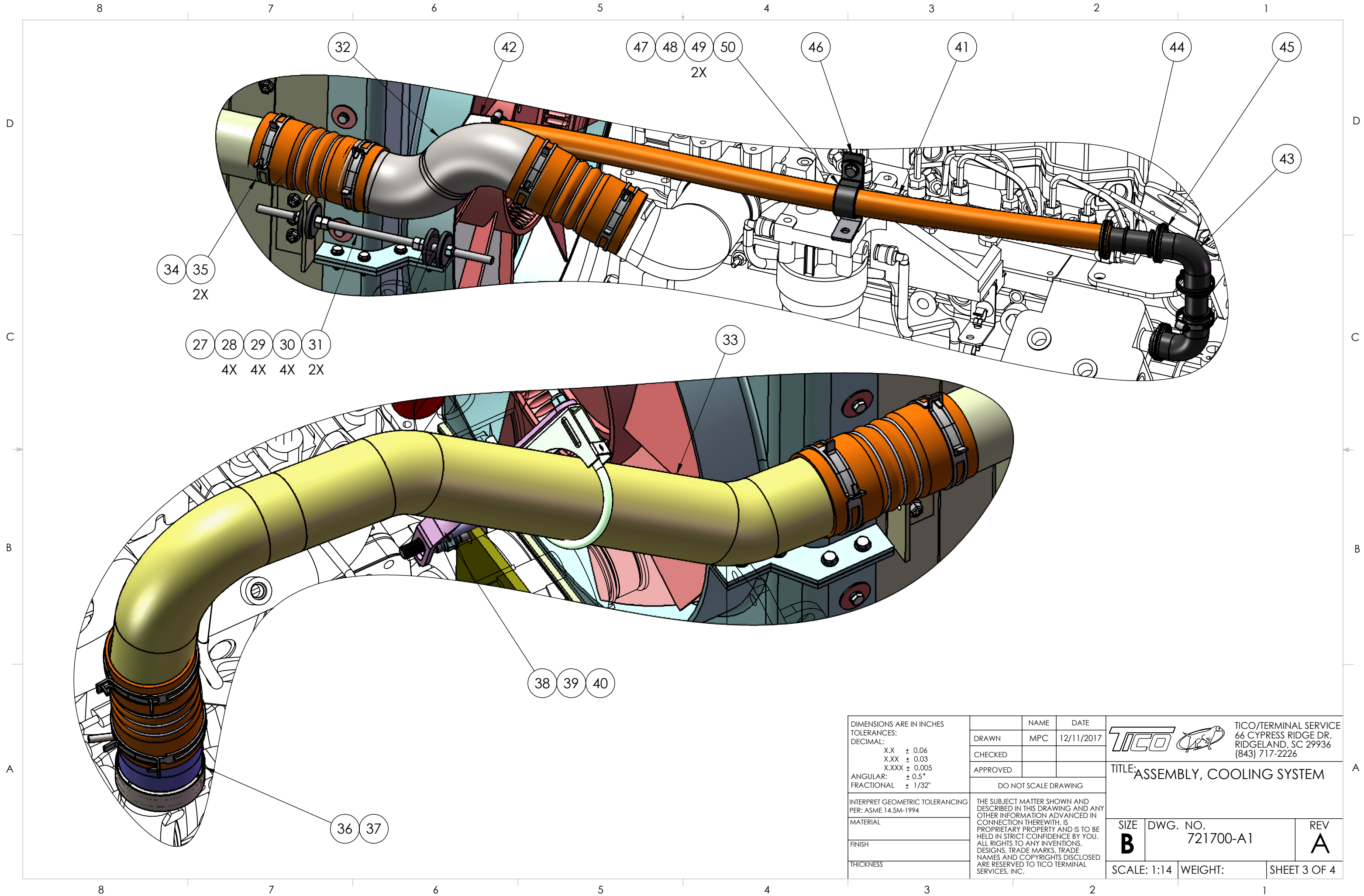


DIMENSIONS ARE IN INCHES TOLERANCES: DECIMAL: X.X ± 0.06 X.XX ± 0.03 X.XXX ± 0.005 ANGULAR: ± 0.5° FRACTIONAL ± 1/32"	NAME	DATE	 TICO/TERMINAL SERVICE 66 CYPRESS RIDGE DR. RIDGELAND, SC 29936 (843) 717-2226	
	DRAWN	MPC		12/11/2017
	CHECKED			
	APPROVED			
INTERPRET GEOMETRIC TOLERANCING PER: ASME 14.5M-1994	DO NOT SCALE DRAWING		TITLE: ASSEMBLY, COOLING SYSTEM	
MATERIAL	THE SUBJECT MATTER SHOWN AND DESCRIBED IN THIS DRAWING AND ANY OTHER INFORMATION ADVANCED IN CONNECTION THEREWITH, IS PROPRIETARY PROPERTY AND IS TO BE HELD IN STRICT CONFIDENCE BY YOU. ALL RIGHTS TO ANY INVENTIONS, DESIGNS, TRADE MARKS, TRADE NAMES AND COPYRIGHTS DISCLOSED ARE RESERVED TO TICO TERMINAL SERVICES, INC.		SIZE <b>B</b> DWG. NO. 721700-A1 REV <b>A</b>	
FINISH			SCALE: 1:14	
THICKNESS			WEIGHT:	
			SHEET 1 OF 4	



DIMENSIONS ARE IN INCHES TOLERANCES: DECIMAL: X.X ± 0.06 X.XX ± 0.03 X.XXX ± 0.005 ANGULAR: ± 0.5° FRACTIONAL ± 1/32"	NAME	DATE	 TICO/TERMINAL SERVICE 66 CYPRESS RIDGE DR. RIDGELAND, SC 29936 (843) 717-2226	
	DRAWN	MPC		12/11/2017
	CHECKED			
	APPROVED			
INTERPRET GEOMETRIC TOLERANCING PER: ASME 14.5M-1994	DO NOT SCALE DRAWING		TITLE: ASSEMBLY, COOLING SYSTEM	
MATERIAL	THE SUBJECT MATTER SHOWN AND DESCRIBED IN THIS DRAWING AND ANY OTHER INFORMATION ADVANCED IN CONNECTION THEREWITH, IS PROPRIETARY PROPERTY AND IS TO BE HELD IN STRICT CONFIDENCE BY YOU. ALL RIGHTS TO ANY INVENTIONS, DESIGNS, TRADE MARKS, TRADE NAMES AND COPYRIGHTS DISCLOSED ARE RESERVED TO TICO TERMINAL SERVICES, INC.		SIZE <b>B</b> DWG. NO. 721700-A1 REV <b>A</b>	
FINISH			SCALE: 1:14	
THICKNESS			WEIGHT:	
			SHEET 2 OF 4	



DIMENSIONS ARE IN INCHES  
 TOLERANCES:  
 DECIMAL:  
 X.X ± 0.06  
 X.XX ± 0.03  
 X.XXX ± 0.005  
 ANGULAR:  
 ± 0.5°  
 FRACTIONAL ± 1/32"

INTERPRET GEOMETRIC TOLERANCING PER: ASME 14.5M-1994

MATERIAL

FINISH

THICKNESS

	NAME	DATE
DRAWN	MPC	12/11/2017
CHECKED		
APPROVED		

DO NOT SCALE DRAWING

THE SUBJECT MATTER SHOWN AND DESCRIBED IN THIS DRAWING AND ANY OTHER INFORMATION ADVANCED IN CONNECTION THEREWITH, IS PROPRIETARY PROPERTY AND IS TO BE HELD IN STRICT CONFIDENCE BY YOU. ALL RIGHTS TO ANY INVENTIONS, DESIGNS, TRADE MARKS, TRADE NAMES AND COPYRIGHTS DISCLOSED ARE RESERVED TO TICO TERMINAL SERVICES, INC.

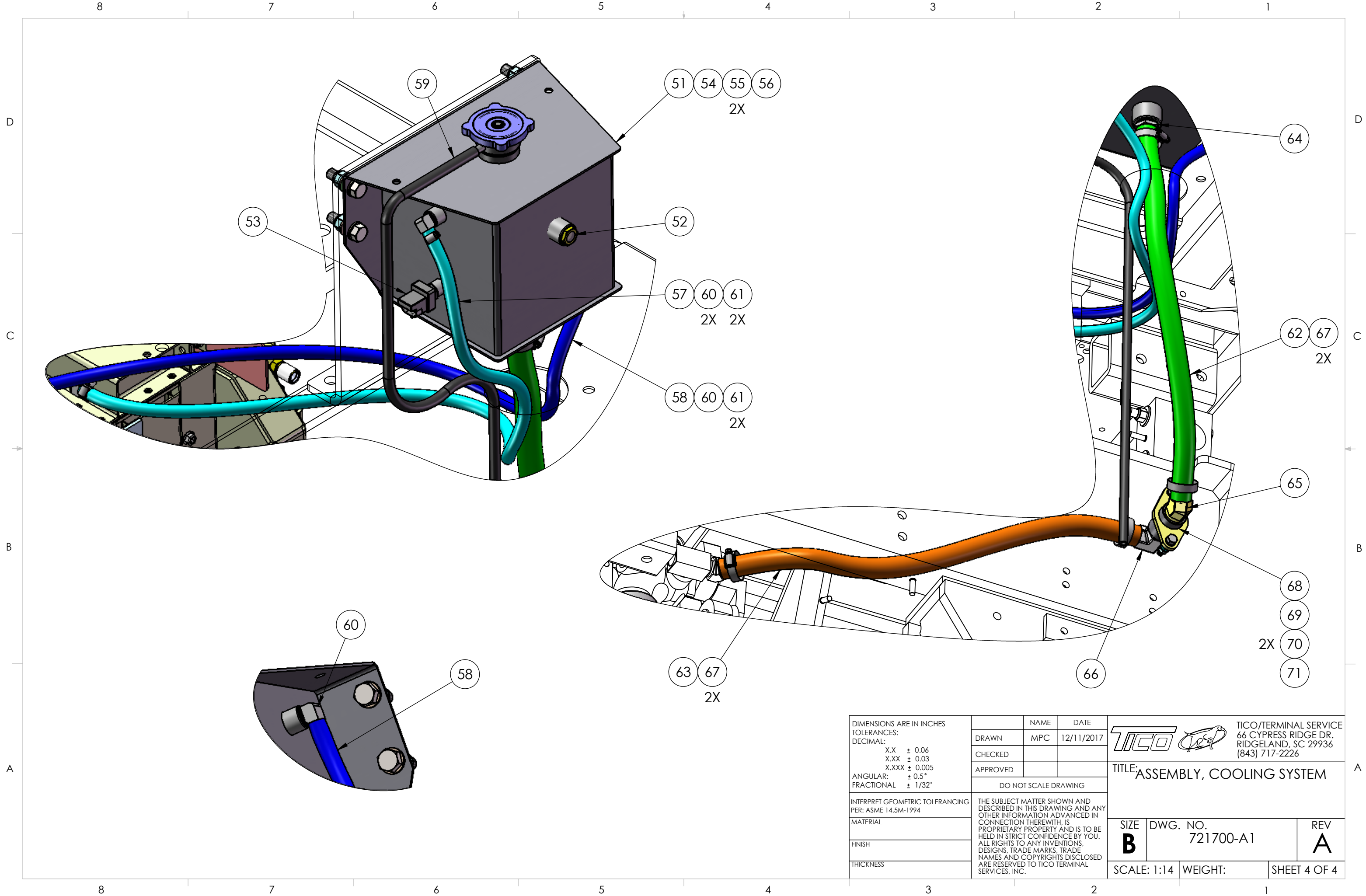


TICO/TERMINAL SERVICE  
 66 CYPRESS RIDGE DR.  
 RIDGELAND, SC 29936  
 (843) 717-2226


TITLE: ASSEMBLY, COOLING SYSTEM

SIZE <b>B</b>	DWG. NO. 721700-A1	REV <b>A</b>
------------------	-----------------------	-----------------

SCALE: 1:14 | WEIGHT: | SHEET 3 OF 4



DIMENSIONS ARE IN INCHES TOLERANCES: DECIMAL: X.X ± 0.06 X.XX ± 0.03 X.XXX ± 0.005 ANGULAR: ± 0.5° FRACTIONAL ± 1/32"	NAME	DATE
	DRAWN	MPC 12/11/2017
	CHECKED	
	APPROVED	
INTERPRET GEOMETRIC TOLERANCING PER: ASME 14.5M-1994	DO NOT SCALE DRAWING	
MATERIAL	THE SUBJECT MATTER SHOWN AND DESCRIBED IN THIS DRAWING AND ANY OTHER INFORMATION ADVANCED IN CONNECTION THEREWITH, IS PROPRIETARY PROPERTY AND IS TO BE HELD IN STRICT CONFIDENCE BY YOU. ALL RIGHTS TO ANY INVENTIONS, DESIGNS, TRADE MARKS, TRADE NAMES AND COPYRIGHTS DISCLOSED ARE RESERVED TO TICO TERMINAL SERVICES, INC.	
FINISH		
THICKNESS		

 TICO/TERMINAL SERVICE 66 CYPRESS RIDGE DR. RIDGELAND, SC 29936 (843) 717-2226		
TITLE: ASSEMBLY, COOLING SYSTEM		
SIZE <b>B</b>	DWG. NO. 721700-A1	REV <b>A</b>
SCALE: 1:14	WEIGHT:	SHEET 4 OF 4



TICO PRO-SPOTTER					
			ASSEMBLY, COOLING SYSTEM	721700	
ITEM	PART #	QTY	DESCRIPTION	NOTE	
32	62055	1	TUBE, CAC, LEFT-HAND		
33	61968	1	TUBE, CAC, RIGHT-HAND		
34	40175	4	HOSE, HUMP, CAC, 3 ID X 6 LONG		
35	40185	8	CLAMP, SPRING HOSE, 2-3/4" TO 3-5/8"		
36	62048	1	ELBOW, PIPE, CAC		
37	42261	1	CLAMP, V-BAND		
NOT SHOWN	42262	1	SEAL, O-RING		
38	30337	1	BRACKET, CAC, RIGHT-HAND (TUBE TO ALTERNATOR)		
39	40005	1	CLAMP, MUFFLER, 3"		
40	80368	1	BOLT, HEX HEAD, PLATED, 12 MM X 160 MM LONG		
41	41265	33.5 IN	HOSE, 1" ID (CAC TO AIR COMPRESSOR)		
42	40722	1	FITTING, ELBOW, 90°, STEEL, 1" BARB X 1" NPT		
43	42188	2	ELBOW, RUBBER, 90°, 1" ID		
44	42205	2	FITTING, STRAIGHT, NYLON, 1" BARB X 1" BARB		
45	42154	6	CLAMP, HOSE, WORMGEAR, #20		
46	61883	1	BRACKET, STANDOFF		
47	40593	1	P-CLAMP, 1"		
48	82371	1	BOLT, HEX HEAD, 5/16-18 X 1 LONG		
49	85090	2	WASHER, FLAT, 5/16		
50	85024	1	LOCKNUT, NYLON, 5/16-18		
51	61936	1	TANK, SURGE		
52	40093	1	GLASS, SIGHT, 3/8 NPT		
53	60824	1	SENSOR FLUID LEVEL		
54	82407	4	BOLT, HEX HEAD, 1/2-13 X 1-3/4 LONG		
55	85093	8	WASHER, FLAT, 1/2		
56	85027	4	LOCKNUT, NYLON, 1/2-13		
57	42192	55 IN	HOSE, 3/8 (RADIATOR TO SURGE TANK)		
58	42192	65 IN	HOSE, 3/8 (ENGINE TO SURGE TANK)		
59	40811	61 IN	HOSE, OVERFLOW 5/16" ID		
60	42239	3	FITTING, HOSE, 90°, BRASS, 3/8 BARB X 3/8 NPT		
61	42148	4	CLAMP, HOSE, WORM GEAR, 1/4" TO 5/8"		
REV	DATE	BY		SHEET	2
A	12/11/2017	MPC		OF	3

TICO MANUFACTURING - RIDGELAND, SC 29936

