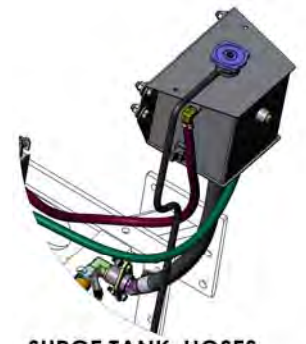
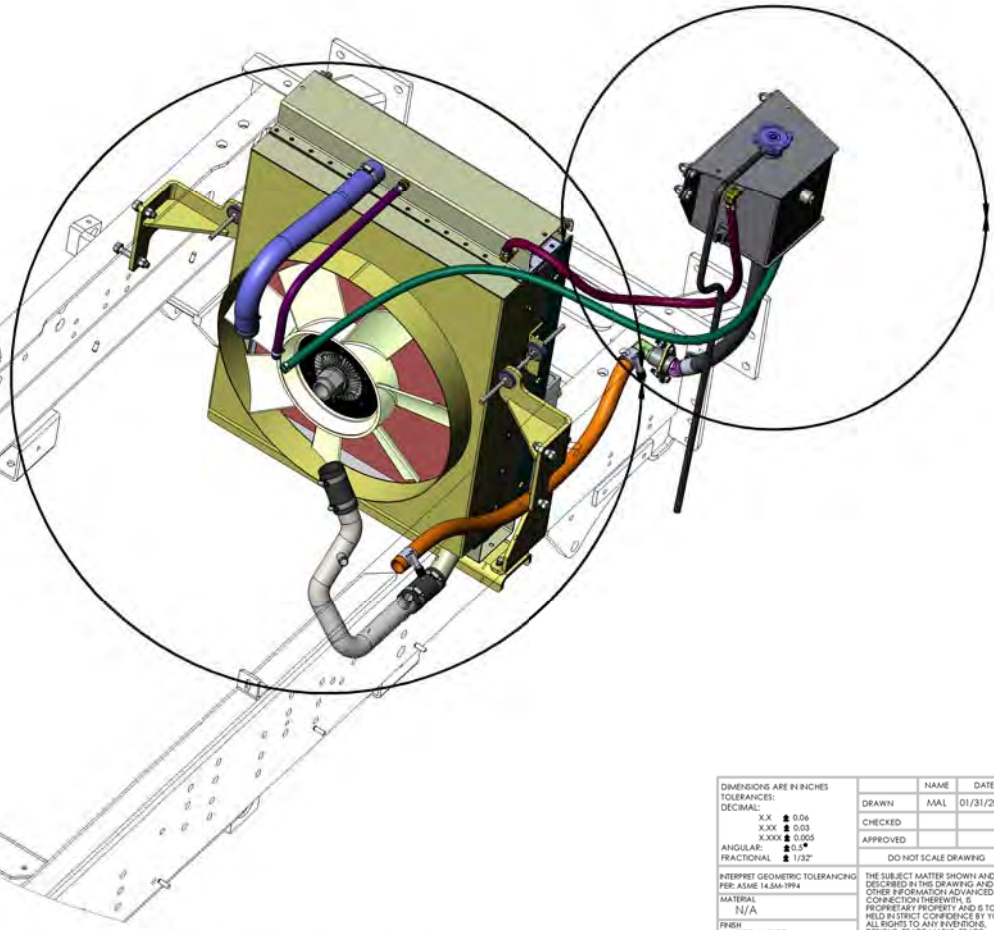


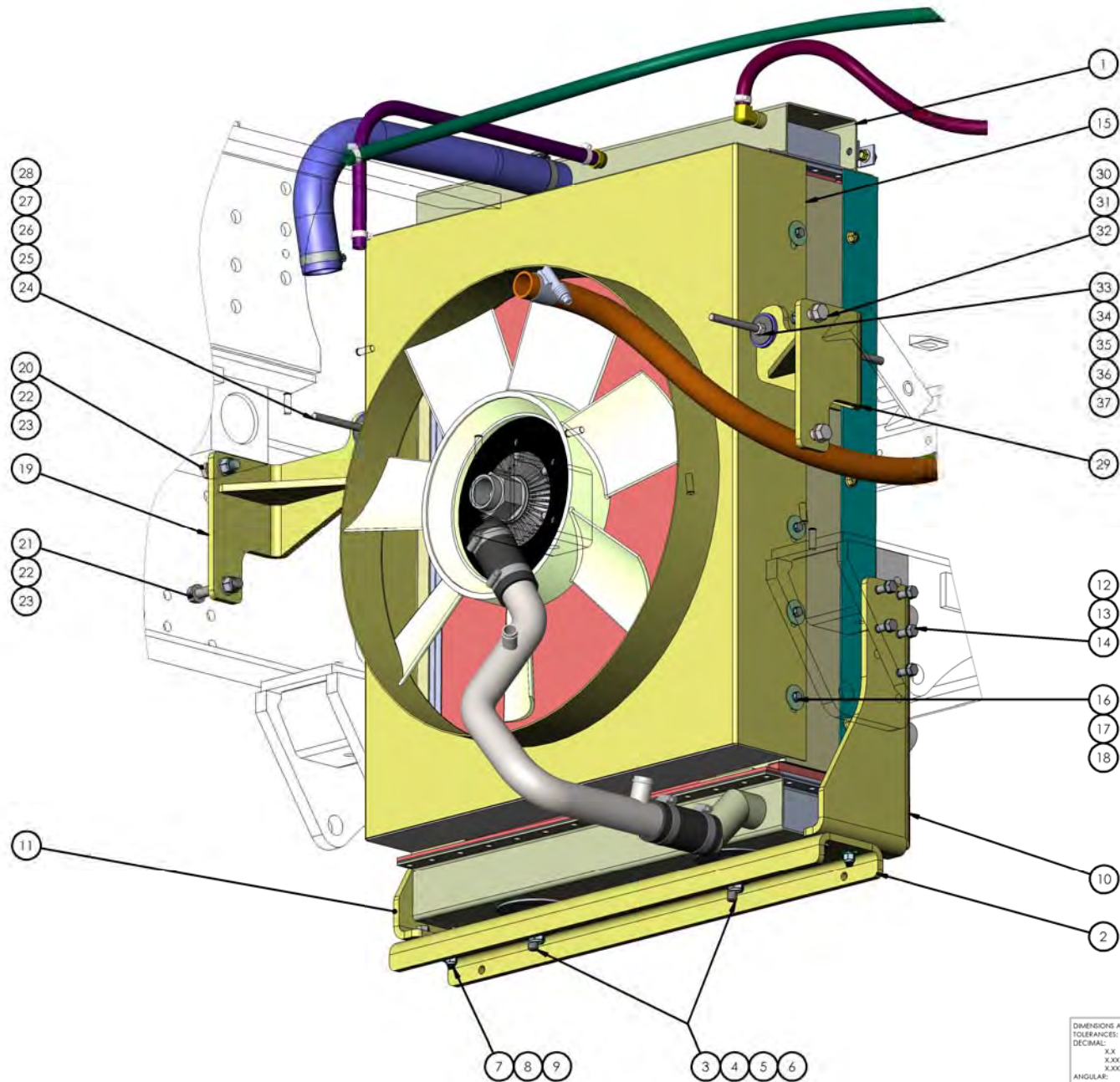
**RADIATOR, SHROUD,
& BRACKETS
PAGE 2**



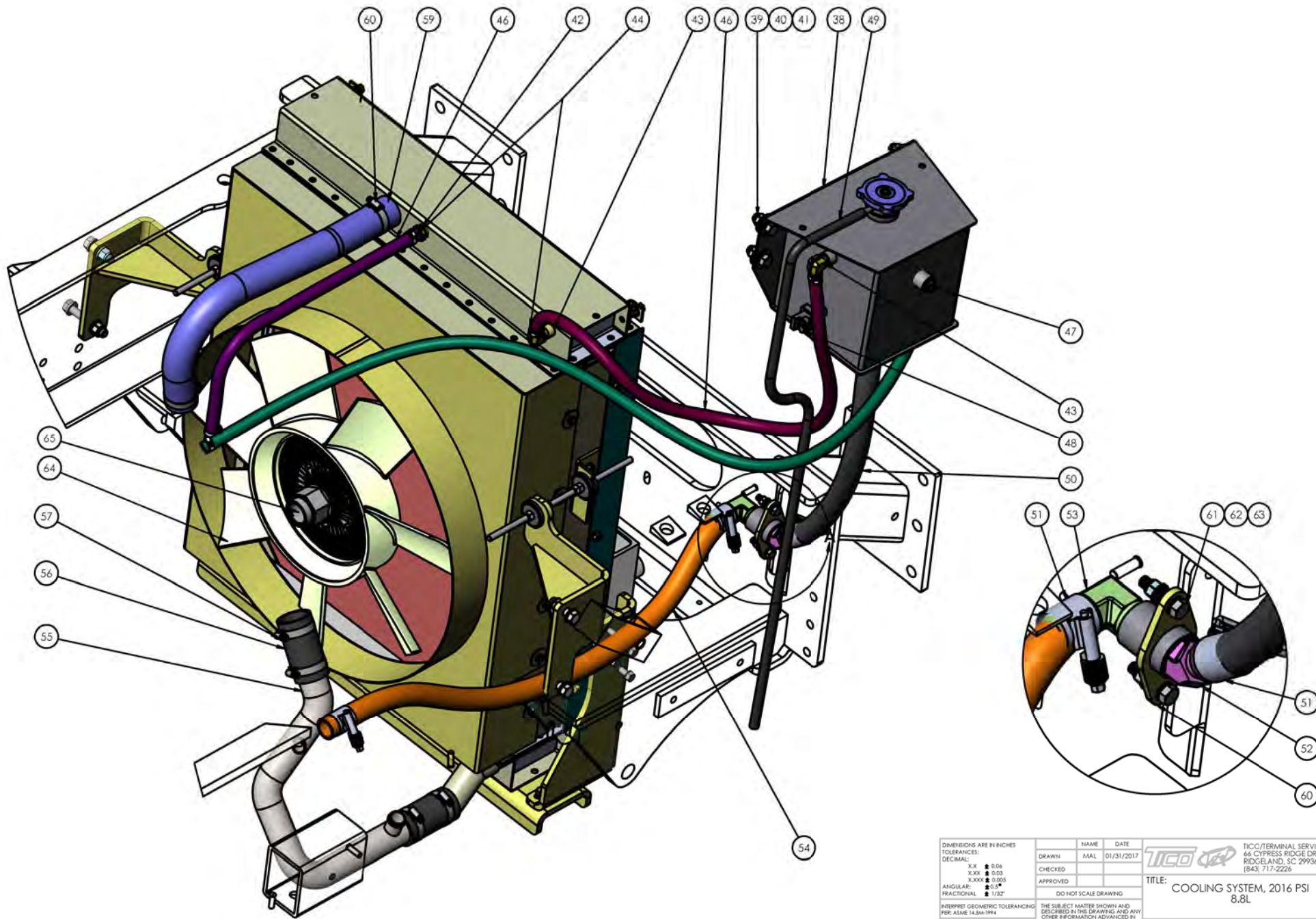
**SURGE TANK, HOSES
& FITTINGS
PAGE 3**



DIMENSIONS ARE IN INCHES		NAME	DATE
TOLERANCES:		DRAWN	MAL
DECIMAL:		CHECKED	
XX	± 0.06	APPROVED	
XXX	± 0.03	DO NOT SCALE DRAWING	
XXXX	± 0.005	THE SUBJECT MATTER SHOWN AND DESCRIBED IN THIS DRAWING AND ANY OTHER INFORMATION ADVANCED IN CONNECTION THEREWITH IS PROPRIETARY PROPERTY AND IS TO BE HELD IN STRICT CONFIDENCE BY YOU. ALL RIGHTS TO ANY INVENTIONS, DESIGN, TRADE MARKS, TRADE NAMES AND COPYRIGHTS DECLARED ARE RESERVED TO TICO TERMINAL SERVICES, INC.	
ANGULAR:	± 0.5°	TICO/TERMINAL SERVICE 66 CYPRESS RIDGE DR. RIDGELAND, SC 29936 (843) 717-2226	
FRACTIONAL:	1/32"	TITLE: COOLING SYSTEM, 2016 PSI 8.8L	
INTERPRET GEOMETRIC TOLERANCING PER: ASME Y14.5M-1994		SIZE	DWG. NO.
MATERIAL	N/A	C	721472-C1
FINISH	SEE NOTE	REV	
THICKNESS	N/A	SCALE: 1:32	WEIGHT: 2787.75 SHEET 1 OF 1



DIMENSIONS ARE IN INCHES		NAME	DATE
TOLERANCES:		DRAWN	MAL
DECIMAL:		CHECKED	
XXX	± 0.06	APPROVED	
XX	± 0.03	DO NOT SCALE DRAWING	
X	± 0.015	THE SUBJECT MATTER SHOWN AND DESCRIBED IN THIS DRAWING AND ANY OTHER INFORMATION ADVANCED IN CONNECTION THEREWITH IS PROPRIETARY PROPERTY AND IS TO BE HELD IN STRICT CONFIDENCE BY YOU. ALL RIGHTS TO ANY INVENTIONS, DESIGNS, TRADE MARKS, TRADE NAMES AND COPYRIGHTS DECLARED ARE RESERVED TO TICO TERMINAL SERVICES, INC.	
ANGULAR:	± 0.5°	TICO/TERRMINAL SERVICE 66 CYPRESS RIDGE DR. RIDGELAND, SC 29936 (843) 717-2226	
FRACTIONAL:	± 1/32"	TITLE: COOLING SYSTEM, 2016 PSI 8.8L	
PERFECT GEOMETRIC TOLERANCING PER: ASME Y14.5M-1994		SIZE	DWG. NO.
MATERIAL	N/A	C	721472-C1
FINISH	SEE NOTE	REV	
THICKNESS	N/A	SCALE: 1:32	WEIGHT: 2787.75 SHEET 1 OF 1



DIMENSIONS ARE IN INCHES		NAME	DATE	
TOLERANCES:		DRAWN	MAL	01/31/2017
DECIMAL:		CHECKED		
.XX ■ 0.06		APPROVED		
.XXX ■ 0.03		DO NOT SCALE DRAWING		
.XXXX ■ 0.005				
ANGULAR: ■ 0.5°				
FRACTIONAL: ■ 1/32"				
INTERPRET GEOMETRIC TOLERANCING PER: ASME Y14.5M-1994		THE SUBJECT MATTER SHOWN AND DESCRIBED IN THIS DRAWING AND ANY OTHER INFORMATION ADVANCED IN CONNECTION THEREWITH IS PROPRIETARY PROPERTY AND IS TO BE HELD IN STRICT CONFIDENCE BY YOU. ALL RIGHTS TO ANY INVENTIONS, DESIGN, TRADE MARKS, TRADE NAMES AND COPYRIGHTS DECLARED ARE RESERVED TO TICO TERMINAL SERVICE, INC.		
MATERIAL	N/A	SIZE	DWG. NO.	
FINISH	SEE NOTE	C	721472-C1	
THICKNESS	N/A	REV		
		SCALE: 1:32	WEIGHT: 2787.75 SHEET 1 OF 1	

TICO/TICO
 TICO TERMINAL SERVICE
 66 CYPRESS RIDGE DR.
 RIDGELAND, SC 29936
 (843) 717-2226

TITLE:
 COOLING SYSTEM, 2016 PSI
 8.8L

TICO PRO-SPOTTER

COOLING SYSTEM, 2016 PSI 8.8L, FABRICATED SHROUD

721472

ITEM	PART #	QTY/M	DESCRIPTION	
	721472-C1	REF	COOLING SYSTEM, 2016 PSI 8.8L	
1	620528	1	RADIATOR ASSEMBLY, PSI 8.8L LPG & GASOLINE	
2	121173	1	MOUNT, LOWER RADIATOR PSI 8.8L	
3	62254	2	ISOLATOR, RADIATOR MOUNT	
4	62332	2	WASHER - RADIATOR MOUNT TOP	
5	62110	2	WASHER - FRONT ENGINE MOUNT - BOTTOM	
6	85027	2	LOCKNUT, NYLON, 1/2-13	
7	82394	4	BOLT, HEX, 3/8-16 X 1-1/2 LONG (BOLTS TO LOWER MOUNT)	
8	85091	8	WASHER, FLAT, 3/8	
9	85025	4	LOCKNUT, NYLON, 3/8-16	
10	121174	1	MOUNT, COOLING PKG, RH PSI 8.8L	
11	121175	1	MOUNT, COOLING PKG, LH PSI 8.8L	
12	82405	10	BOLT, HEX, 3/8-16 X 1-3/4 LONG (BOLTS TO SPRING HANGERS)	
13	85091	20	WASHER, FLAT, 3/8	
14	85025	10	LOCKNUT, NYLON, 3/8-16	
15	620562	1	SHROUD, PSI 8.8L FABRICATED	
16	82359	12	BOLT, HEX, 1/4-20 X 3/4 LONG	
17	80129	12	WASHER, FENDER, 1/4 ID X 1-1/4 OD	
18	85133	12	LOCKWASHER, HELICAL, 1/4	
NOT SHOWN	82370	8	BOLT, HEX 1/4-20 X 1 LONG	
NOT SHOWN	85089	16	WASHER, FLAT NARROW HARD 1/4	
NOT SHOWN	85034	8	LOCKNUT, 1/4-20	
19	121088	1	MOUNT, UPPER RAD SUPT, LH	
20	82407	1	BOLT, HEX, 1/2-13 X 1-3/4 LONG	
21	85462	1	BOLT, HEX, 1/2-13 X 3 LONG	
22	85093	4	WASHER, FLAT, 1/2	
23	85027	2	LOCKNUT, NYLON, 1/2-13	
24	620782	1	THREADED ROD 3/8-16 X 8-1/2" LONG	
25	85036	2	LOCKNUT, 3/8-16	
26	80346	4	WASHER, FENDER, 3/8 ID X 1 1/2 OD X 1/16 THK.	
27	60857	4	WASHER RUBBER 3/8 ID X 1-3/4 OD X 3/8T 60DURO	
28	85003	4	NUT, HEX, 3/8-16, GRD 5, ZINC	
REV	DATE	BY		SHEET
C	01/30/2017	MAL		1 OF 3

TICO PRO-SPOTTER

COOLING SYSTEM, 2016 PSI 8.8L, FABRICATED SHROUD

721472

ITEM	PART #	QTY/M	DESCRIPTION	
55	620536	1	TUBE, LOWER RADIATOR, PSI 8.8L	
56	620735	2	RADIATOR HOSE, LOWER EXTENSION, PSI	
	920335	1		
57	40184-1	4	CLAMP, CONSTANT TORQUE, 1 3/4 - 2 5/8"	
58	620769	1	RADIATOR HOSE, UPPER, PSI	
59	40190-2	2	CLAMP, CONSTANT TORQUE, 1 1/16 - 2"	
60	12898	1	FRAME COUPLING BRACKET, SURGE TANK	
	12899	1		
	30186	1		
61	82394	2	BOLT, HEX, 3/8-16 X 1-1/2 LG	
62	85091	4	WASHER, FLAT, 3/8	
63	85025	2	LOCKNUT, NYLOCK, 3/8-16	
NOT SHOWN	420302	TBD	HOSE, 5/8 (HEATER CORE TO CONTROL VALVE)	
NOT SHOWN	420302	TBD	HOSE, 5/8 (CONTROL VALVE TO ENGINE)	
NOT SHOWN	420302	TBD	HOSE, 5/8 (HEATER CORE TO ENGINE)	
NOT SHOWN	410320	4 IN	HOSE, 3/4 (ENGINE TOP TO HEATER CORE HOSE)	
NOT SHOWN	410320	TBD	HOSE, 3/4 (ENGINE REAR TO WATER PUMP)	
NOT SHOWN	42152	10	CLAMP, WORM GEAR 1/2-1 1/4	
NOT SHOWN	420360	1	FITTING, ADAPTER, STR., 3/4" ORBM TO 1/2" NPTF, STEEL	
NOT SHOWN	420361	1	FITTING, TEE, 1/2" NPTM TO 1/2" NPTF TO 1/2" NPTF, STEEL	
NOT SHOWN	42178	1	FITTING, ADAPTER, ELBOW 90°, 5/8" HOSE BARB TO 1/2" NPTM, BRASS	
NOT SHOWN	420359	1	FITTING, ELBOW 90°, 3/4" HOSE BARB TO 1/2" NPTM	
NOT SHOWN	420363	1	FITTING, REDUCER, STR., 3/4" HOSE BARB TO 5/8" HOSE BARB, STEEL	
64	620519	1	COOLING FAN, 22", CCW, PSI 8.8L, 2.375" PW	
NOT SHOWN	82360	6	BOLT, HEX 5/16"-18 x 3/4" LG	
NOT SHOWN	84134	6	LOCKWASHER - HELICAL SPRING 5/16"	
NOT SHOWN	85090	6	WASHER - NARROW - HARD 5/16"	
NOT SHOWN	10624	2	ELBOW, 90 DEG 3/4 O-RING TO 3/4 JICM	
65	620781	1	FAN DRIVE, BORG WARNER 750 SERIES VISCOUS	
REV	DATE	BY		SHEET
C	02/01/2017	MAL		3 OF 3