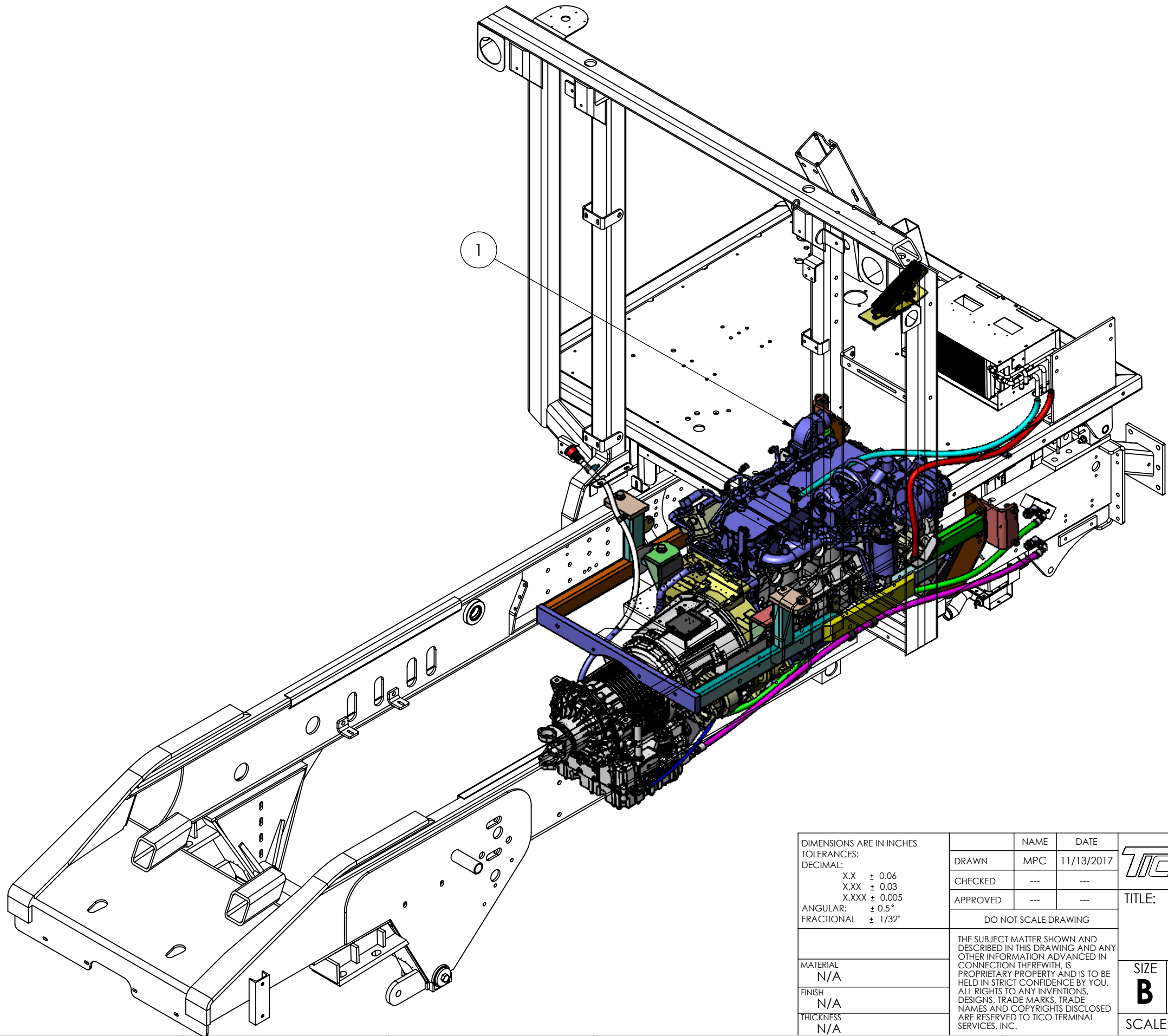



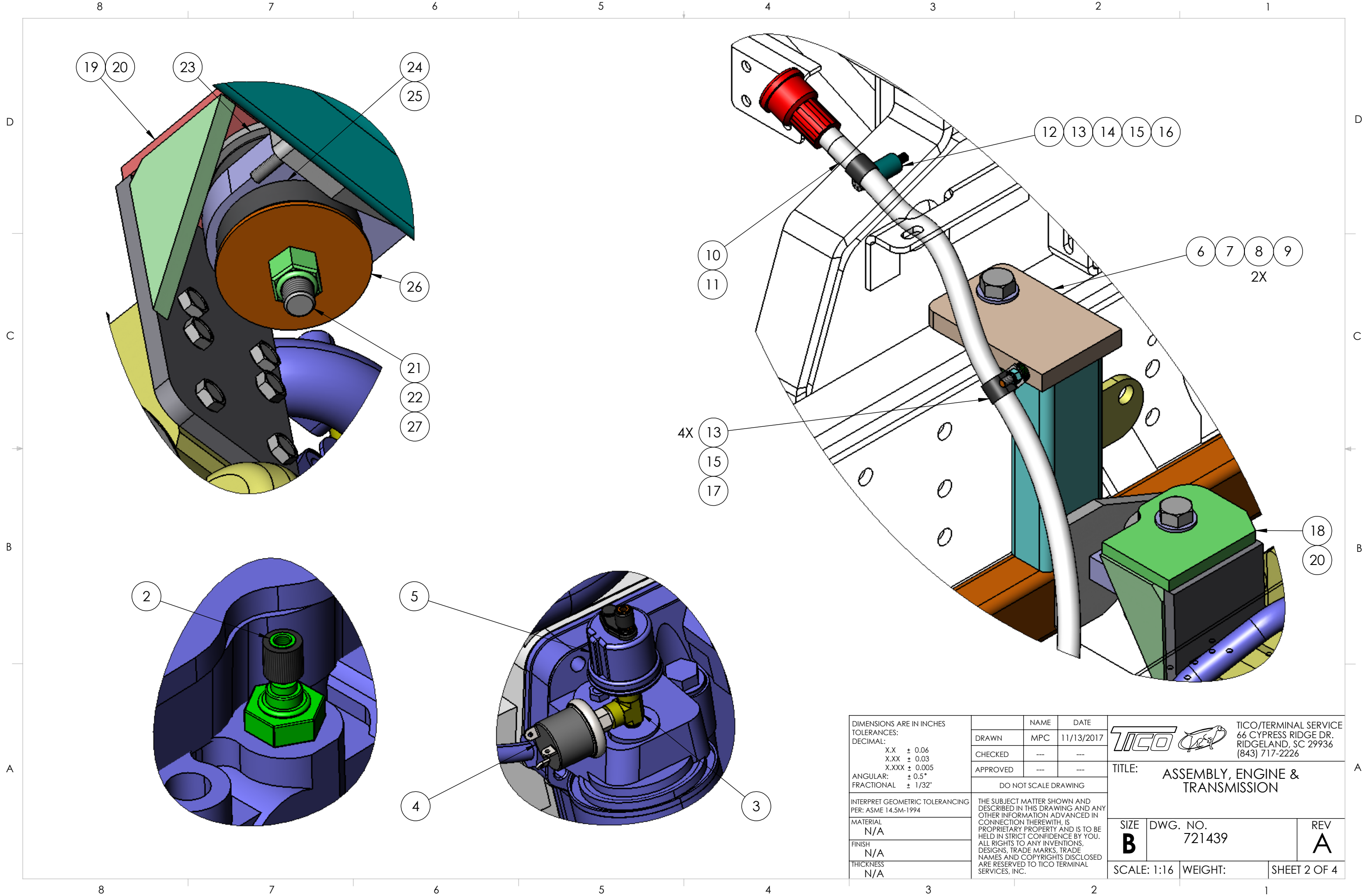
8 7 6 5 4 3 2 1

D  
C  
B  
A



DIMENSIONS ARE IN INCHES TOLERANCES: DECIMAL: X.X ± 0.06 X.XX ± 0.03 X.XXX ± 0.005 ANGULAR: ± 0.5° FRACTIONAL ± 1/32"	DRAWN	NAME	DATE	 TICO MANUFACTURING 66 CYPRESS RIDGE DR. RIDGELAND, SC 29936 (843) 717-2226
	CHECKED	---	---	
	APPROVED	---	---	
	DO NOT SCALE DRAWING			
MATERIAL	THE SUBJECT MATTER SHOWN AND DESCRIBED IN THIS DRAWING AND ANY OTHER INFORMATION ADVANCED IN CONNECTION THEREWITH, IS PROPRIETARY PROPERTY AND IS TO BE HELD IN STRICT CONFIDENCE BY YOU. ALL RIGHTS TO ANY INVENTIONS, DESIGNS, TRADE MARKS, TRADE NAMES AND COPYRIGHTS DISCLOSED ARE RESERVED TO TICO TERMINAL SERVICES, INC.			
FINISH				
THICKNESS				
	SIZE	DWG. NO.	REV	
	<b>B</b>	721439	<b>A</b>	
	SCALE: 1:16	WEIGHT:	SHEET 1 OF 4	

8 7 6 5 4 3 2 1



DIMENSIONS ARE IN INCHES  
TOLERANCES:  
DECIMAL:  
X.X ± 0.06  
X.XX ± 0.03  
X.XXX ± 0.005  
ANGULAR: ± 0.5°  
FRACTIONAL ± 1/32"

INTERPRET GEOMETRIC TOLERANCING PER: ASME 14.5M-1994

MATERIAL N/A  
FINISH N/A  
THICKNESS N/A

	NAME	DATE
DRAWN	MPC	11/13/2017
CHECKED	---	---
APPROVED	---	---

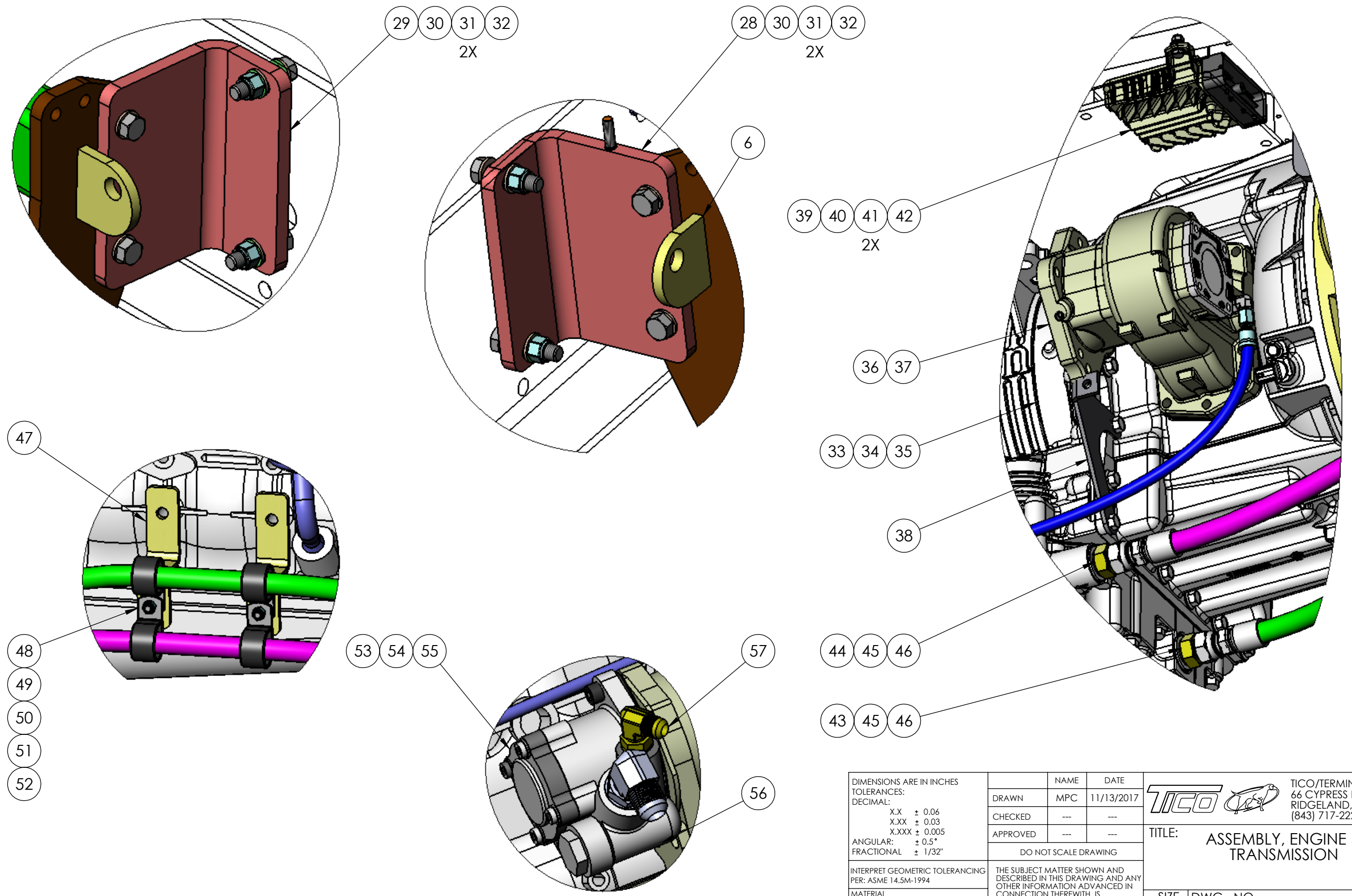


TICO/TERMINAL SERVICE  
66 CYPRESS RIDGE DR.  
RIDGELAND, SC 29936  
(843) 717-2226

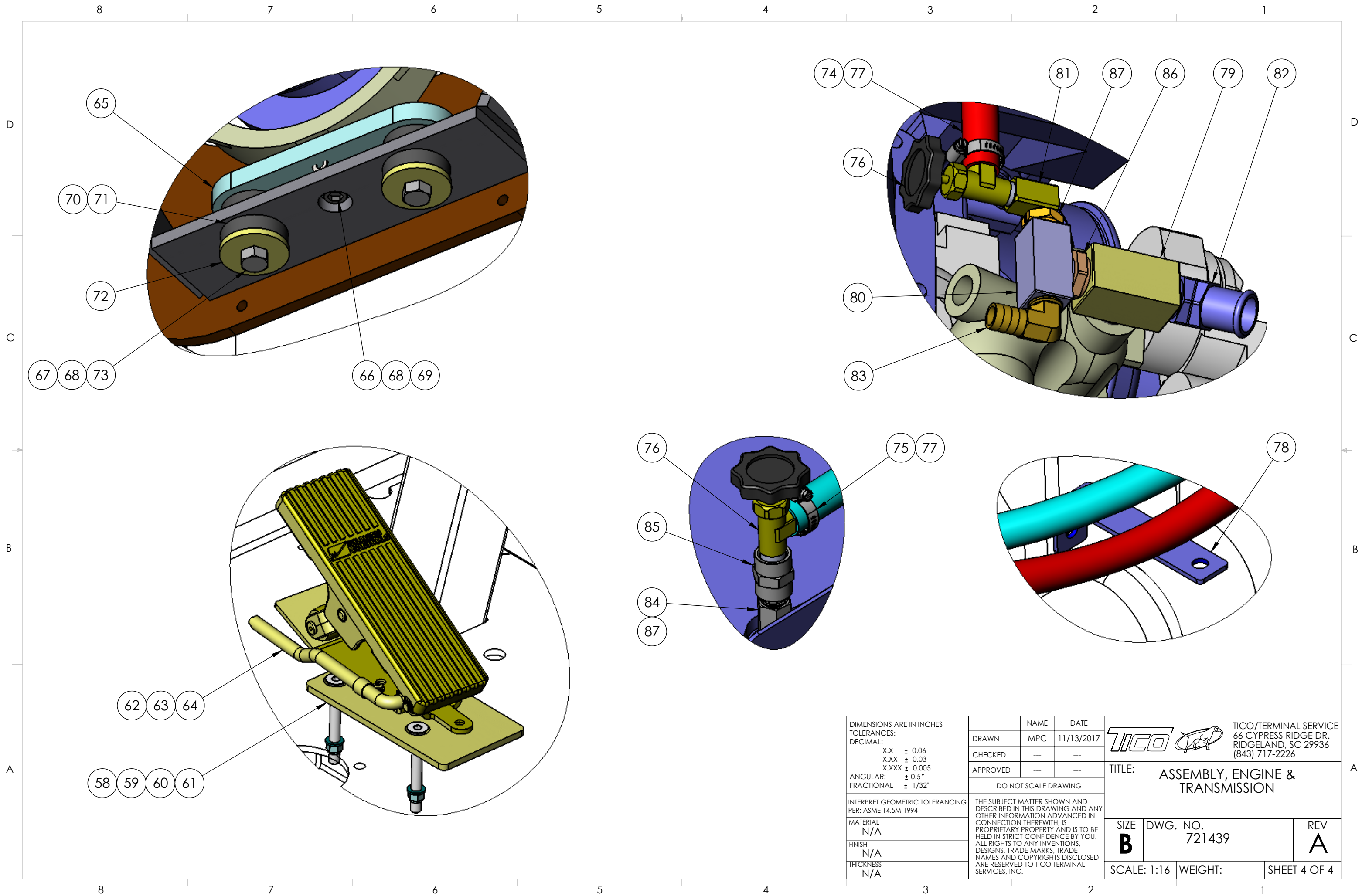
DO NOT SCALE DRAWING

THE SUBJECT MATTER SHOWN AND DESCRIBED IN THIS DRAWING AND ANY OTHER INFORMATION ADVANCED IN CONNECTION THEREWITH, IS PROPRIETARY PROPERTY AND IS TO BE HELD IN STRICT CONFIDENCE BY YOU. ALL RIGHTS TO ANY INVENTIONS, DESIGNS, TRADE MARKS, TRADE NAMES AND COPYRIGHTS DISCLOSED ARE RESERVED TO TICO TERMINAL SERVICES, INC.


TITLE: <b>ASSEMBLY, ENGINE &amp; TRANSMISSION</b>		
SIZE <b>B</b>	DWG. NO. 721439	REV <b>A</b>
SCALE: 1:16	WEIGHT:	SHEET 2 OF 4



DIMENSIONS ARE IN INCHES TOLERANCES: DECIMAL: X.X ± 0.06 X.XX ± 0.03 X.XXX ± 0.005 ANGULAR: ± 0.5° FRACTIONAL ± 1/32"	DRAWN MPC	NAME MPC	DATE 11/13/2017
	CHECKED ---	---	---
	APPROVED ---	---	---
	DO NOT SCALE DRAWING		
INTERPRET GEOMETRIC TOLERANCING PER: ASME 14.5M-1994	THE SUBJECT MATTER SHOWN AND DESCRIBED IN THIS DRAWING AND ANY OTHER INFORMATION ADVANCED IN CONNECTION THEREWITH, IS PROPRIETARY PROPERTY AND IS TO BE HELD IN STRICT CONFIDENCE BY YOU. ALL RIGHTS TO ANY INVENTIONS, DESIGNS, TRADE MARKS, TRADE NAMES AND COPYRIGHTS DISCLOSED ARE RESERVED TO TICO TERMINAL SERVICES, INC.		
MATERIAL N/A	TITLE: ASSEMBLY, ENGINE & TRANSMISSION		TICO/TERMINAL SERVICE 66 CYPRESS RIDGE DR. RIDGELAND, SC 29936 (843) 717-2226
FINISH N/A	SIZE <b>B</b>	DWG. NO. 721439	REV <b>A</b>
THICKNESS N/A	SCALE: 1:16	WEIGHT:	SHEET 3 OF 4



DIMENSIONS ARE IN INCHES		NAME	DATE
TOLERANCES:		DRAWN	MPC 11/13/2017
DECIMAL:		CHECKED	---
X.X ± 0.06		APPROVED	---
X.XX ± 0.03		DO NOT SCALE DRAWING	
X.XXX ± 0.005		THE SUBJECT MATTER SHOWN AND DESCRIBED IN THIS DRAWING AND ANY OTHER INFORMATION ADVANCED IN CONNECTION THEREWITH, IS PROPRIETARY PROPERTY AND IS TO BE HELD IN STRICT CONFIDENCE BY YOU. ALL RIGHTS TO ANY INVENTIONS, DESIGNS, TRADE MARKS, TRADE NAMES AND COPYRIGHTS DISCLOSED ARE RESERVED TO TICO TERMINAL SERVICES, INC.	
ANGULAR:		INTERPRET GEOMETRIC TOLERANCING PER: ASME 14.5M-1994	
± 0.5°		MATERIAL	
FRACTIONAL ± 1/32"		N/A	
FINISH		N/A	
THICKNESS		N/A	

 TICO/TERMINAL SERVICE 66 CYPRESS RIDGE DR. RIDGELAND, SC 29936 (843) 717-2226		
TITLE: ASSEMBLY, ENGINE & TRANSMISSION		
SIZE	DWG. NO.	REV
<b>B</b>	721439	<b>A</b>
SCALE: 1:16	WEIGHT:	SHEET 4 OF 4

TICO PRO-SPOTTER			
ENGINE & TRANS 2016 QSB-III, 173 HP @ 2200, RDS3000, 1-5TH -GEN V, BLK HTR, AC, DELCO STR &			721439
ITEM	PART #	QTY/M	DESCRIPTION
1	620743	1	ENGINE SPECIFICATION - QSB-173HP-12V-BLK HTR-AC-DELCO STR-
2	91069	1	SENSOR-WATER TEMP GAUGE
3	40467	1	FITTING, TEE STREET, 1/8 NPT
4	60061	1	PRESSURE STAT 10 PSI
5	91068	1	SENSOR-OIL PRESS GAUGE
6	62210	1	ENGINE CRADLE QSB3
7	82519	2	BOLT-3/4-16NC X 4 1/4LG
8	85095	4	WASHER-3/4
9	82508	2	BOLT-3/4-16NC X 4 LG
10	61574	1	TRANS-DIPSTICK
11	62126	1	CLIP, DIPSTICK RETAINER
12	800458	1	BOLT HEX M8-2 12 X 20MM
13	85090	5	WASHER, FLAT, 5/16
14	85134	1	LOCKWASHER 5/16
15	41273	2	CLAMP "P", 1/2"
16	12091	1	SPACER - DIPSTICK CLIP
17	85024	1	LOCKNUT, NYLON, 5/16-18
18	60981	1	MOUNT-REAR ENGINE LH
19	60982	1	MOUNT-REAR ENGINE RH
20	80240	12	BOLT-M12 x 1.5 x 35mm, HEX HD , 10.9
21	60799-6	6	BOLT-10MM-1.5 X 30, HEX HD 10.9
22	85095	2	WASHER-3/4
23	60740	2	WASHER-3/4 REAR ENGINE MOUNT
24	60136	2	ISOLATOR-REAR ENGINE
25	82530	2	BOLT-3/4-10UNC x 4 1/2 LG HEX HD
26	60740-1	2	WASHER, 3/4" REAR ENGINE MT
27	85029	2	NUT-3/4-10UNC NYLK
28	61572-5	1	MOUNTING BRACKET, FRAME, FRONT ENGINE (RIGHT-HAND)
29	61572-9	1	MOUNTING BRACKET, FRAME, FRONT ENGINE (LEFT-HAND)
30	82418	8	BOLT, HEX HEAD, 1/2-13 X 2 LONG
31	85093	16	WASHER, FLAT, 1/2
32	85027	8	LOCKNUT, NYLON, 1/2-13
33	60799-17	1	TRANS., ALLISON 3000 SERIES, TC-417 (EO21220)
34	60799-12	1	TRANS MOUNTING KIT
35	60799-6	6	BOLT, FLEX PLATE/TORQUE CONVERTER
NS	62192	1	SHIFTER-TRANSMISSION PUSH BUTTON
36	60953	1	PTO, CONSTANST MESH
37	41037	1	HOSE ASSEMBLY (PTO TO TRANSMISSION)
<b>REV</b>	<b>DATE</b>	<b>BY</b>	<b>SHEET</b>
A	6/26/2020	BRN	1 OF 1

TICO MANUFACTURING - RIDGELAND, SC 29936

**TICO PRO-SPOTTER**

**TRANS 2016 QSB-III, 173 HP @ 2200, RDS3000, 1-5TH -GEN V, BLK HTR, AC, DELCO STR & ALT, HMT, EXP** **721439**

ITEM	PART #	QTY/M	DESCRIPTION	
38	90910	1	BRACKET SUPPORT POS & NEG CABLES	
39	62185	1	TCM-1st-5th SPEED, 1950 SHIFT CAL	
40	82359	3	BOLT, HEX HEAD, 1/4-20 X 3/4 LONG	
41	85089	6	WASHER, FLAT, 1/4	
42	85023	3	LOCKNUT, NYLON, 1/4-20	
43	41240	1	HOSE, ASSY, #12X 93" LG, TRANS to COOLER	
44	41026	1	HOSE, ASSY, #12X 86" LG, TRANS to COOLER	
45	10624	2	FITTING, ELBOW 90 °, 3/4 O RING to # 12 JIC	
46	40471	2	FITTING, ADAPTER STR, 3/4 O RING to # 12 JIC	
47	60956	3	BRACKET-TRANS HOSE	
48	82370	1	BOLT, HEX HD 1/4-20 X 1" LG	
49	85013	3	JAM NUT, 5/16-18	
50	40593	1	CLAMP, P 1" ID	
51	85111	2	WASHER, FLAT 1/4	
52	85023	1	NUT, HEX NYLOCK 1/4 -20	
53	61916	1	PUMP, STEERING, 4 GPM, 2150 PSI, FLOW CONTRL, IXETIC	
54	60212	1	GASKET, HYDRAULIC PUMP	
55	80175	2	BOLT, SQUARE HOLLOW SECTION, 10 MM X 1.50 X 30 MM LONG	
56	10624	1	FITTING, ELBOW, 90°, 3/4 O-RING X 3/4 JIC	
57	40460	1	FITTING, ELBOW, 90°, 1/2 O-RING X 1/2 JIC	
58	90632	1	MOUNTING PLATE ELECTRIC THROTTLE	
59	83318	2	SC HC SCREW 3/8-16 x 3 1/2" Lg	
60	85113	4	WASHER, FLAT 3/8	
61	85036	2	LOCKNUT, 3/8-16	
62	60747	1	PEDAL ACCELERATOR - ELECTRONIC QSB	
63	85133	2	LOCKWASHER, 1/4	
64	85012	2	NUT, HEX 1/4-20	
65	60809	1	MOUNTING PL-FRT ENG	
66	80341	1	CAPSCREW, SOCKET HEAD, DRILLED HEAD, M16 X 2 X 45 MM	
67	82474		BOLT, HEX HEAD, 5/8-11 X 3-1/4 LONG	
68	85094		WASHER, FLAT, 5/8	
69	85138		LOCKWASHER, 5/8	
70	60814		ISOLATOR, DUAL SYSTEM, FRONT ENGINE MOUNT	
71	10971		SPACER, FRONT ENGINE MOUNT	
72	60113		WASHER, BOOM, 5/8 ID X 3 OD	
73	85028		LOCKNUT, NYLON, 5/8-11	
<b>REV</b>	<b>DATE</b>	<b>BY</b>		<b>SHEET</b>
A	6/26/2020	BRN		2 OF

