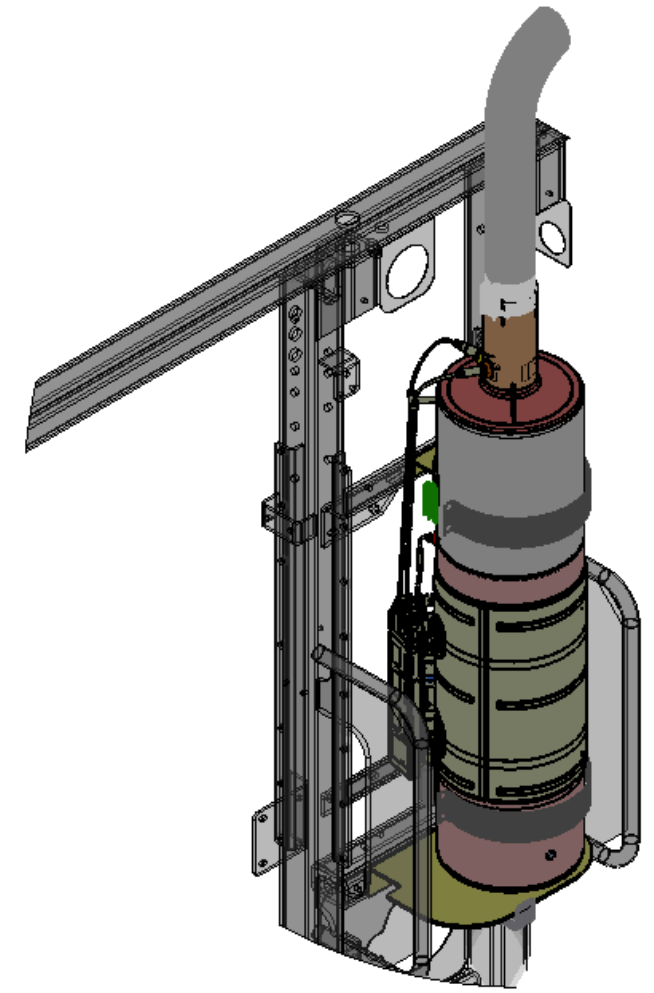
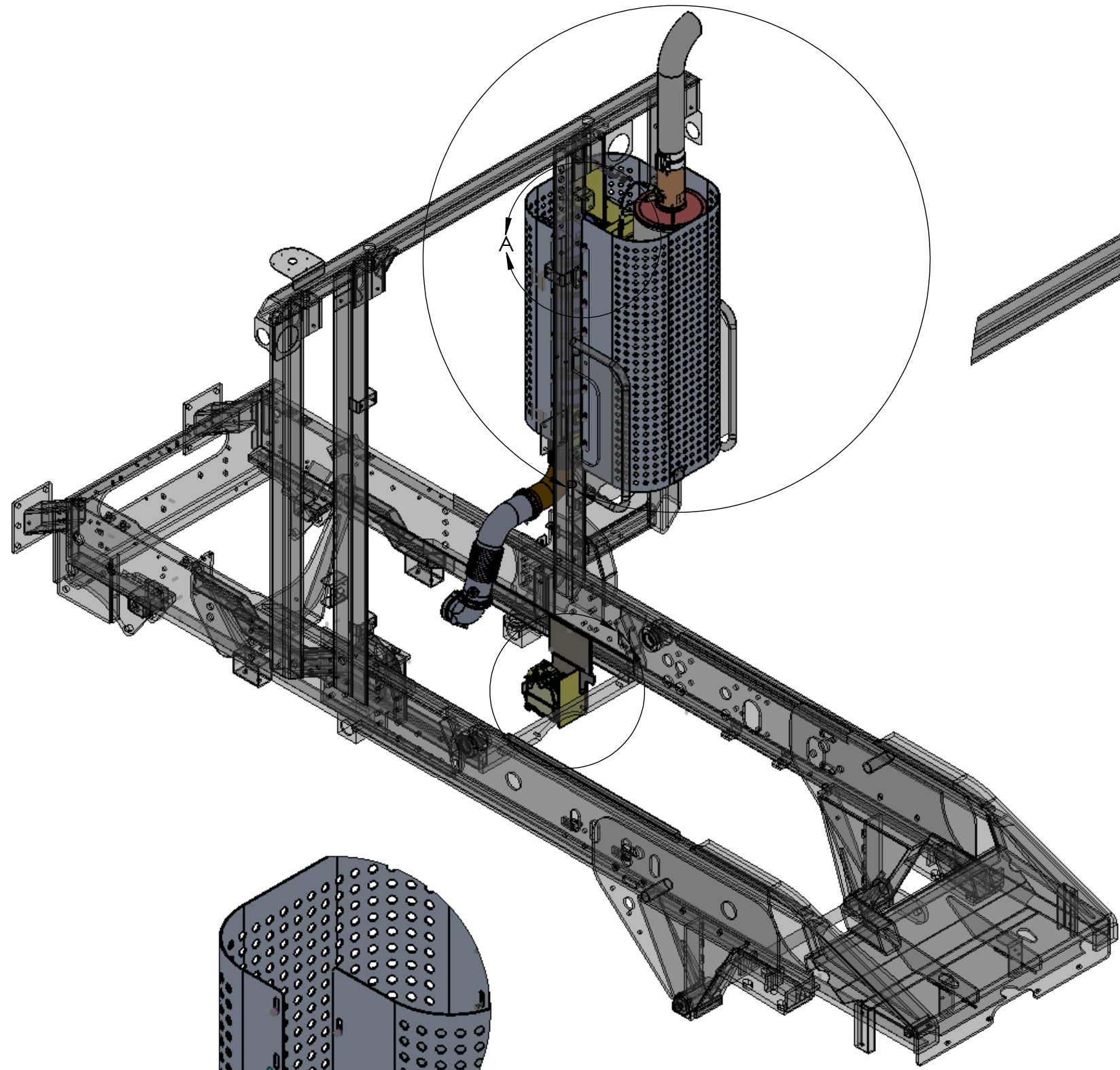
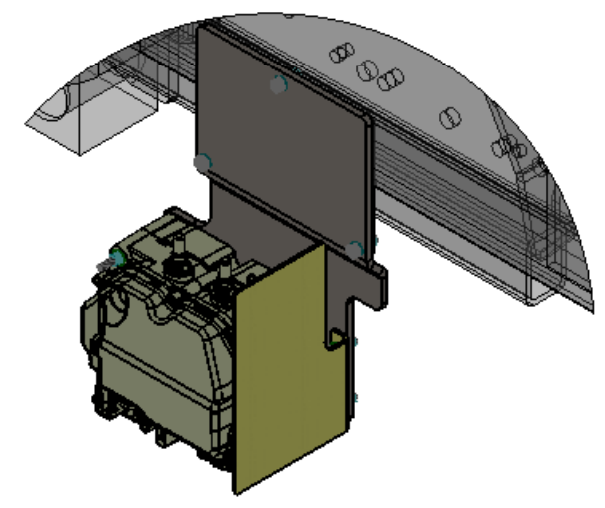


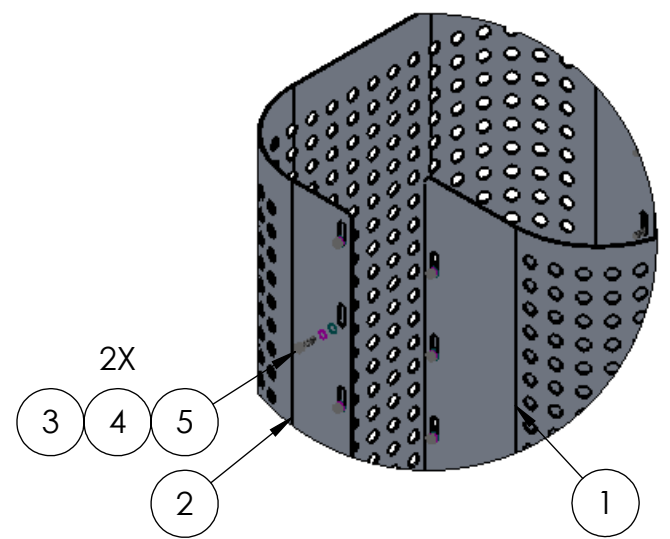
**DPF, DRT, BRACKETS, & PIPES  
PAGE 3**



**SCR, EXHAUST STACK,  
& BRACKETS  
PAGE 2**



**SUPPLY MODULE & BRACKETS  
PAGE 2**



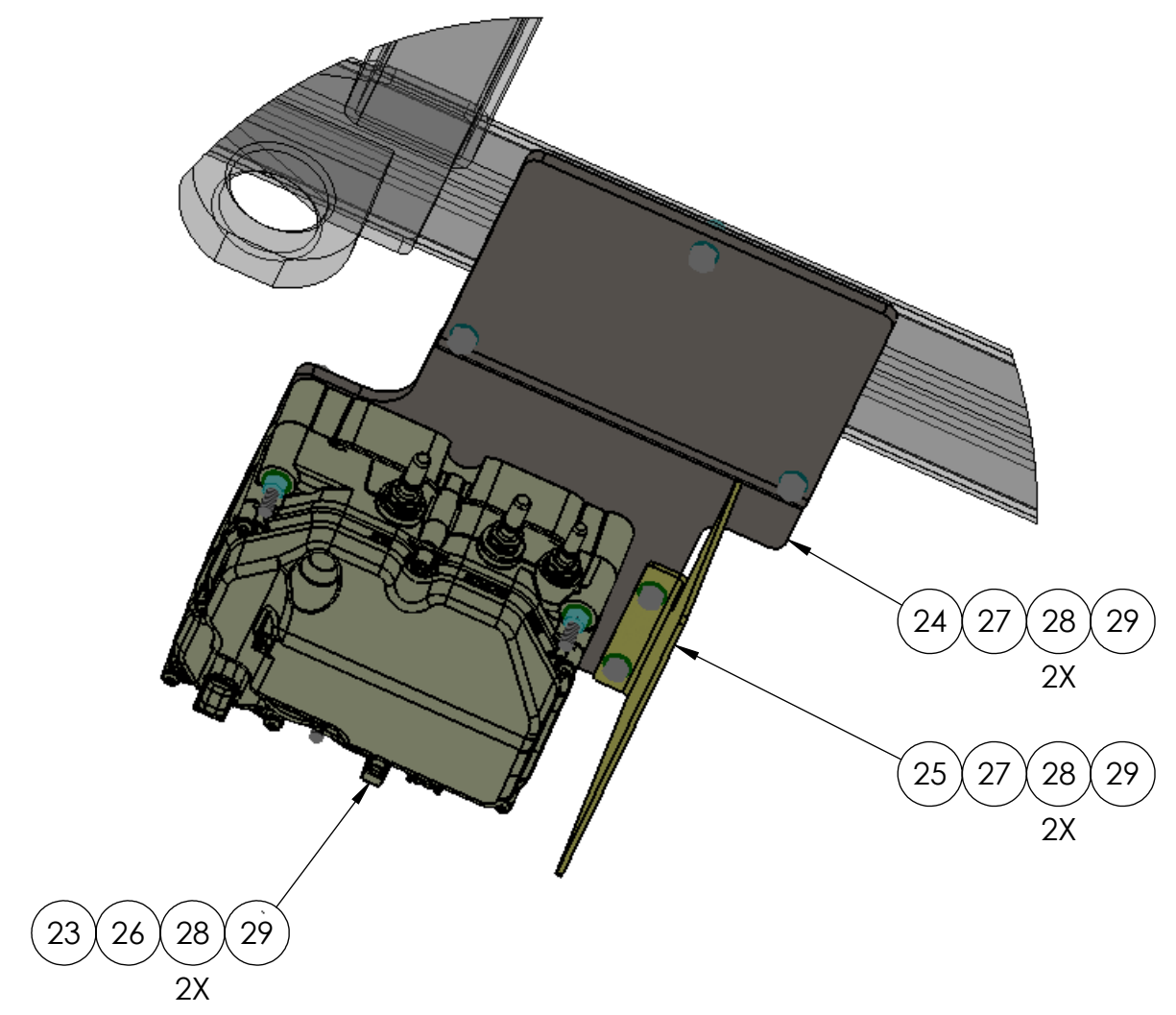
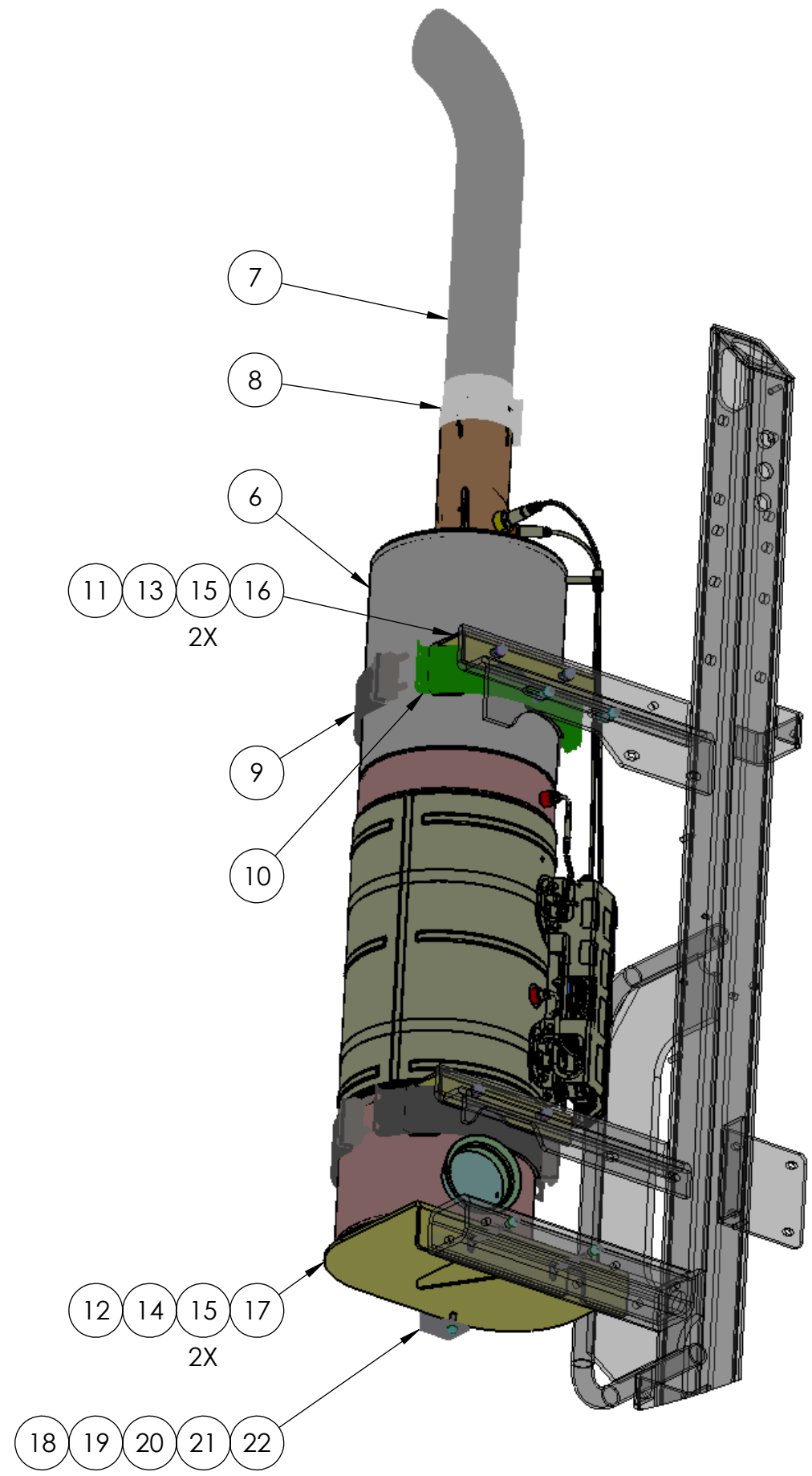
**HEAT SHIELDS  
(DETAIL A)**


DIMENSIONS ARE IN INCHES TOLERANCES: DECIMAL: X.X ± 0.06 X.XX ± 0.03 X.XXX ± 0.005 ANGULAR: ± 0.5° FRACTIONAL ± 1/32"	NAME MPC	DATE 02/17/2017	TICO/TERMINAL SERVICE 66 CYPRESS RIDGE DR. RIDGELAND, SC 29936 (843) 717-2226	
	DRAWN			TITLE: ASSEMBLY, EXHAUST SYSTEM, ISB
	CHECKED			
INTERPRET GEOMETRIC TOLERANCING PER: ASME 14.5M-1994	APPROVED	DO NOT SCALE DRAWING		
MATERIAL	THE SUBJECT MATTER SHOWN AND DESCRIBED IN THIS DRAWING AND ANY OTHER INFORMATION ADVANCED IN CONNECTION THEREWITH, IS PROPRIETARY PROPERTY AND IS TO BE HELD IN STRICT CONFIDENCE BY YOU. ALL RIGHTS TO ANY INVENTIONS, DESIGNS, TRADE MARKS, TRADE NAMES AND COPYRIGHTS DISCLOSED ARE RESERVED TO TICO TERMINAL SERVICES, INC.		SIZE <b>B</b>	
FINISH	DWG. NO. 721223-A1	REV	SCALE: 1:16	
THICKNESS	WEIGHT:	SHEET 1 OF 3		

8 7 6 5 4 3 2 1

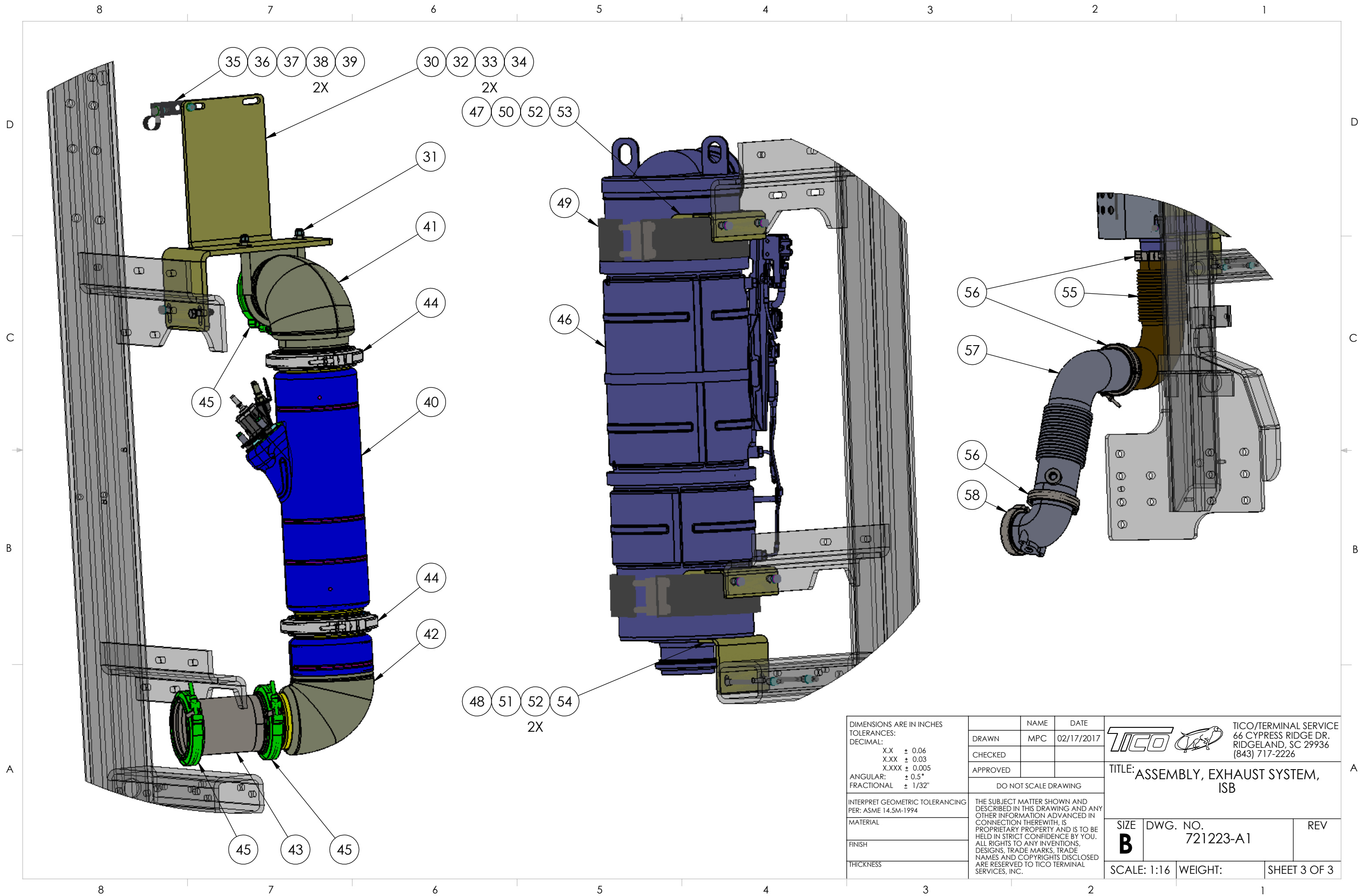
D  
C  
B  
A

D  
C  
B  
A



DIMENSIONS ARE IN INCHES TOLERANCES: DECIMAL: X.X ± 0.06 X.XX ± 0.03 X.XXX ± 0.005 ANGULAR: ± 0.5° FRACTIONAL ± 1/32"	NAME	DATE	 TICO/TERMINAL SERVICE 66 CYPRESS RIDGE DR. RIDGELAND, SC 29936 (843) 717-2226	
	DRAWN	MPC		02/17/2017
	CHECKED			
	APPROVED			
INTERPRET GEOMETRIC TOLERANCING PER: ASME 14.5M-1994	DO NOT SCALE DRAWING		TITLE: ASSEMBLY, EXHAUST SYSTEM, ISB	
MATERIAL	THE SUBJECT MATTER SHOWN AND DESCRIBED IN THIS DRAWING AND ANY OTHER INFORMATION ADVANCED IN CONNECTION THEREWITH, IS PROPRIETARY PROPERTY AND IS TO BE HELD IN STRICT CONFIDENCE BY YOU. ALL RIGHTS TO ANY INVENTIONS, DESIGNS, TRADE MARKS, TRADE NAMES AND COPYRIGHTS DISCLOSED ARE RESERVED TO TICO TERMINAL SERVICES, INC.		SIZE <b>B</b> DWG. NO. 721223-A1 REV	
FINISH			SCALE: 1:16	
THICKNESS			WEIGHT:	
			SHEET 2 OF 3	

8 7 6 5 4 3 2 1



DIMENSIONS ARE IN INCHES  
 TOLERANCES:  
 DECIMAL:  
 X.X ± 0.06  
 X.XX ± 0.03  
 X.XXX ± 0.005  
 ANGULAR:  
 ± 0.5°  
 FRACTIONAL ± 1/32"

INTERPRET GEOMETRIC TOLERANCING PER: ASME 14.5M-1994

MATERIAL

FINISH

THICKNESS

	NAME	DATE
DRAWN	MPC	02/17/2017
CHECKED		
APPROVED		



TICO/TERMINAL SERVICE  
 66 CYPRESS RIDGE DR.  
 RIDGELAND, SC 29936  
 (843) 717-2226

TITLE: ASSEMBLY, EXHAUST SYSTEM, ISB

DO NOT SCALE DRAWING

THE SUBJECT MATTER SHOWN AND DESCRIBED IN THIS DRAWING AND ANY OTHER INFORMATION ADVANCED IN CONNECTION THEREWITH, IS PROPRIETARY PROPERTY AND IS TO BE HELD IN STRICT CONFIDENCE BY YOU. ALL RIGHTS TO ANY INVENTIONS, DESIGNS, TRADE MARKS, TRADE NAMES AND COPYRIGHTS DISCLOSED ARE RESERVED TO TICO TERMINAL SERVICES, INC.

SIZE <b>B</b>	DWG. NO. 721223-A1	REV
SCALE: 1:16	WEIGHT:	SHEET 3 OF 3

TICO PRO-SPOTTER			
ASSEMBLY, EXHAUST SYSTEM, ISB			721223
ITEM	PART #	QTY/M	DESCRIPTION
	721223-A1	REF	ASSEMBLY, EXHAUST SYSTEM, ISB
1	62327	1	HEAT SHIELD, SCR
2	62324	1	HEAT SHIELD, DRT & DPF
3	82372	16	BOLT, HEX HEAD, 3/8-16 X 1 LONG
4	85091	16	WASHER, FLAT, 3/8
5	85135	16	LOCKWASHER, 3/8
6	620554	1	SCR (SELECTIVE CATALYTIC REACTOR)
7	61998-24	1	STACK, EXHAUST, ALUMINIZED, 24" LONG
8	61894	1	CLAMP, LAP JOINT, STAINLESS STEEL, 4"
9	420316	2	CLAMP, EXHAUST, BAND, STAINLESS STEEL, 4.5"
10	420315	2	CLAMP, EXHAUST, BAND, STAINLESS STEEL, 7"
11	121363	2	BRACKET, SCR & CLAMPS
12	12886	1	BRACKET, SCR
13	82383	4	BOLT, HEX HEAD, 3/8-16 X 1-1/4 LONG (CLAMP TO CAB BAR)
14	82548	2	BOLT, HEX HEAD, 3/8-16 X 5 LONG (BRACKET TO CAB BAR)
15	85091	8	WASHER, FLAT, 3/8
16	85135	4	LOCKWASHER, 3/8-16
17	85025	2	LOCKNUT, NYLON, 3/8-16
18	62423	1	BRACKET, SCR (HEAT SHIELD TO BOTTOM SUPPORT)
19	82371	1	BOLT, HEX HEAD, 5/16-18 X 1 LONG
20	80327	1	WASHER, FENDER, STAINLESS STEEL, .31 X 1.25
21	85090	3	WASHER, FLAT, 5/16
22	85024	2	LOCKNUT, NYLON, 5/16-18
23	61741	1	MODULE, SUPPLY DEP
24	121043	1	BRACKET, MOUNT, SUPPLY MODULE
25	121044	1	GUARD, MUD, SUPPLY MODULE
26	82514	3	BOLT, 5/16-18 X 4-1/4 LONG
27	82371	5	BOLT, 5/16-18 X 1 LONG
28	85090	10	WASHER, FLAT, 5/16
29	85024	5	LOCKNUT, NYLON, 5/16-18
30	12787	1	BRACKET, MOUNT, DRT & SNORKEL
31	42243	1	CLAMP, MUFFLER, 4-1/2"
32	82394	2	BOLT, HEX HEAD, 3/8-16 X 1-1/2 LONG
33	85091	4	WASHER, FLAT, 3/8
34	85025	2	LOCKNUT, NYLON, 3/8-16
<b>REV</b>	<b>DATE</b>	<b>BY</b>	<b>SHEET</b>
A	02/17/2017	MPC	1 OF 2

