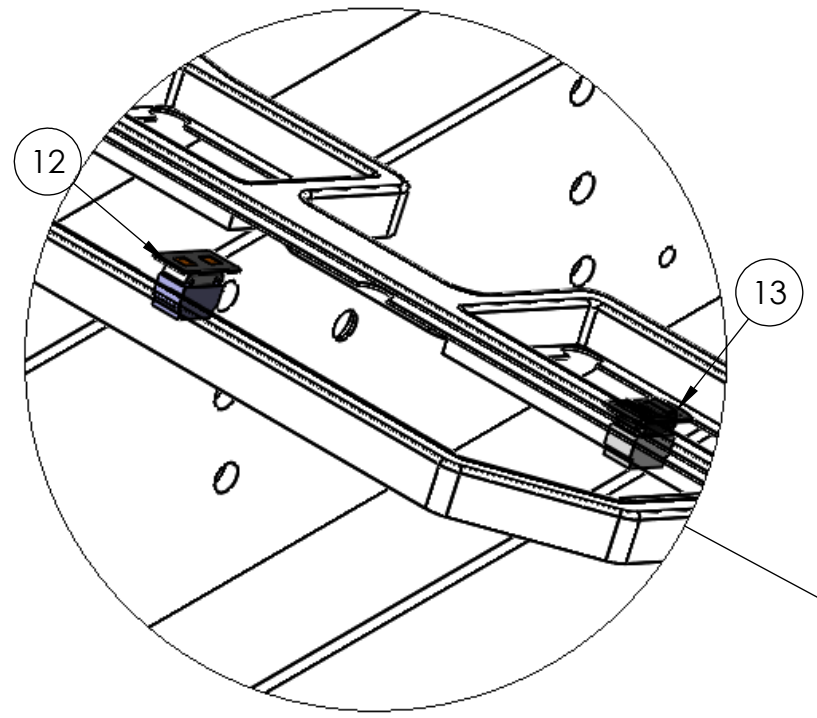


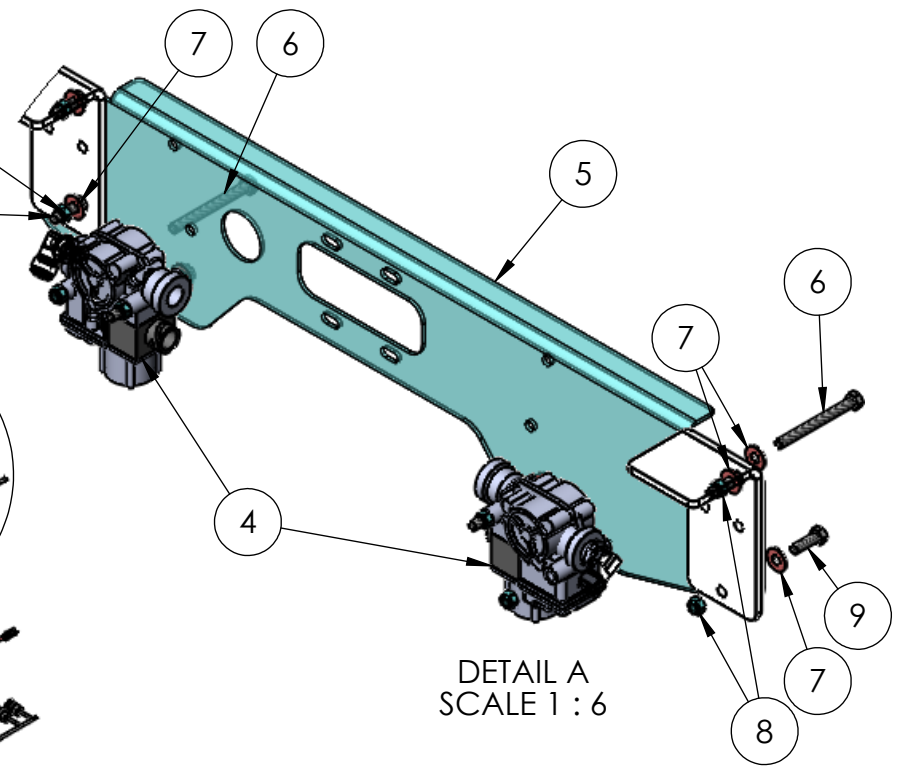
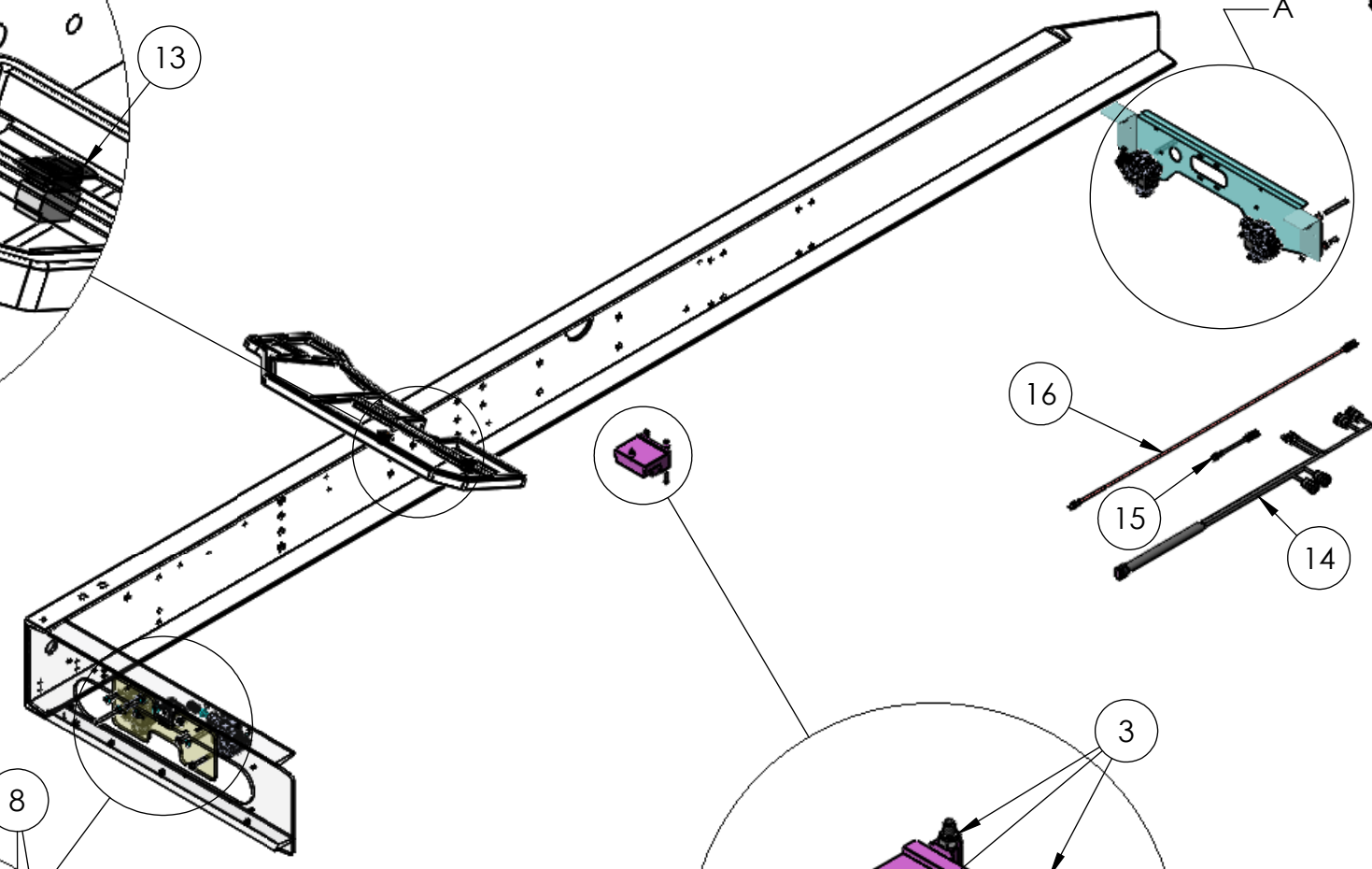
8 7 6 5 4 3 2 1

D
C
B
A

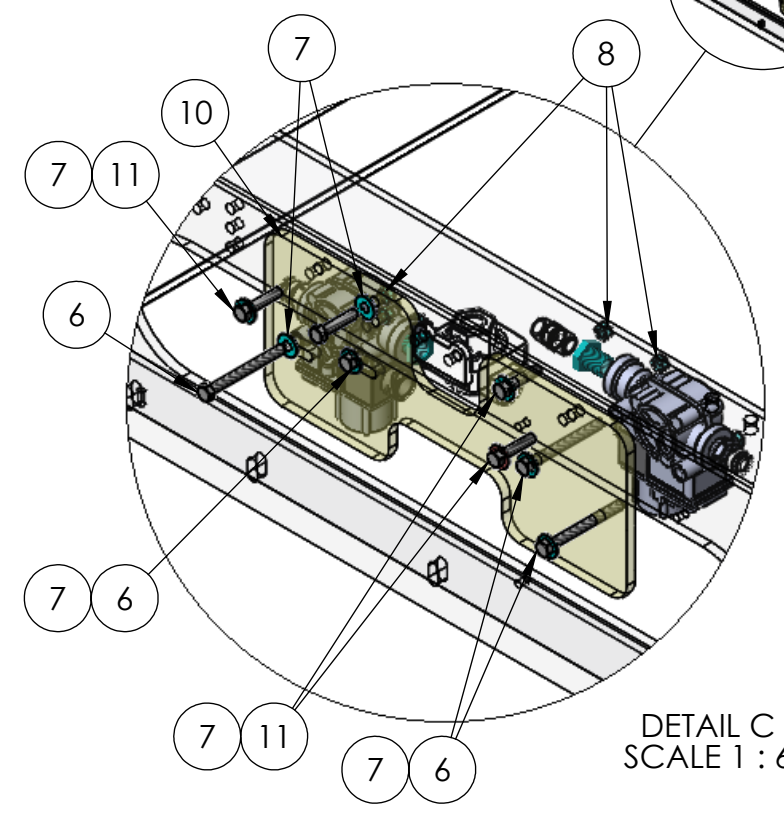
D
C
B
A



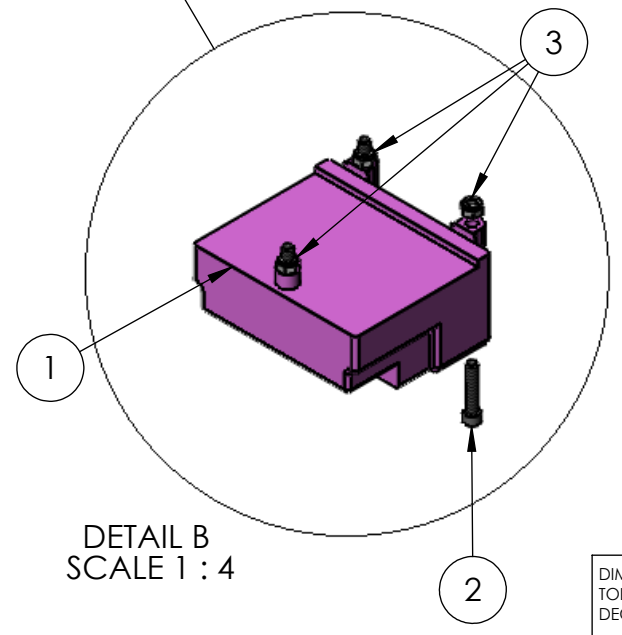
DETAIL D
SCALE 1 : 4




DETAIL A
SCALE 1 : 6



DETAIL C
SCALE 1 : 6

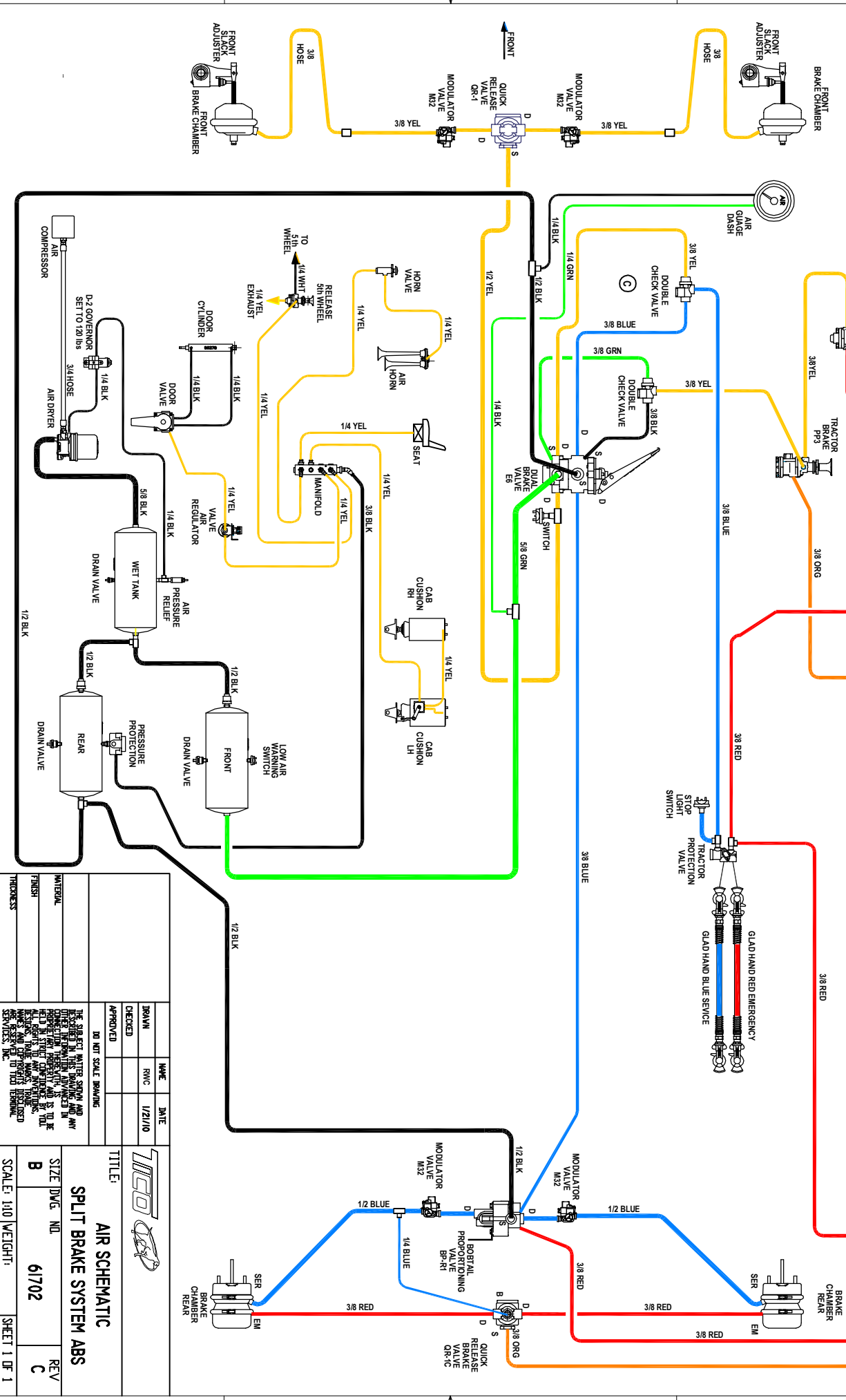


DETAIL B
SCALE 1 : 4

| | | | | |
|--|---|----------------------|------------------|--|
| DIMENSIONS ARE IN INCHES TOLERANCES: DECIMAL: X.X ± 0.1250 X.XX ± 0.0625 X.XXX ± 0.0313 ANGULAR: FRACTIONAL ± 1/16" | DRAWN RWC | NAME RWC | DATE 10/10/11 |  TICO/TERMINAL SERVICE 66 CYPRESS RIDGE DR. RIDGELAND, SC 29936 (843) 717-2226 |
| | CHECKED | | | |
| | APPROVED | | | |
| | DO NOT SCALE DRAWING | | | |
| INTERPRET GEOMETRIC TOLERANCING PER: ASME 14.5M-1994 | THE SUBJECT MATTER SHOWN AND DESCRIBED IN THIS DRAWING AND ANY OTHER INFORMATION ADVANCED IN CONNECTION THEREWITH, IS PROPRIETARY PROPERTY AND IS TO BE HELD IN STRICT CONFIDENCE BY YOU. ALL RIGHTS TO ANY INVENTIONS, DESIGNS, TRADE MARKS, TRADE NAMES AND COPYRIGHTS DISCLOSED ARE RESERVED TO TICO TERMINAL SERVICES, INC. | | | TITLE: BRAKE SYSTEM-ABS BENDIX EC60 |
| MATERIAL | SIZE B | DWG. NO. 71117-A1 | REV A1 | SCALE: 1:20 |
| FINISH | SHEET 1 OF 1 | | | |
| THICKNESS | | | | |

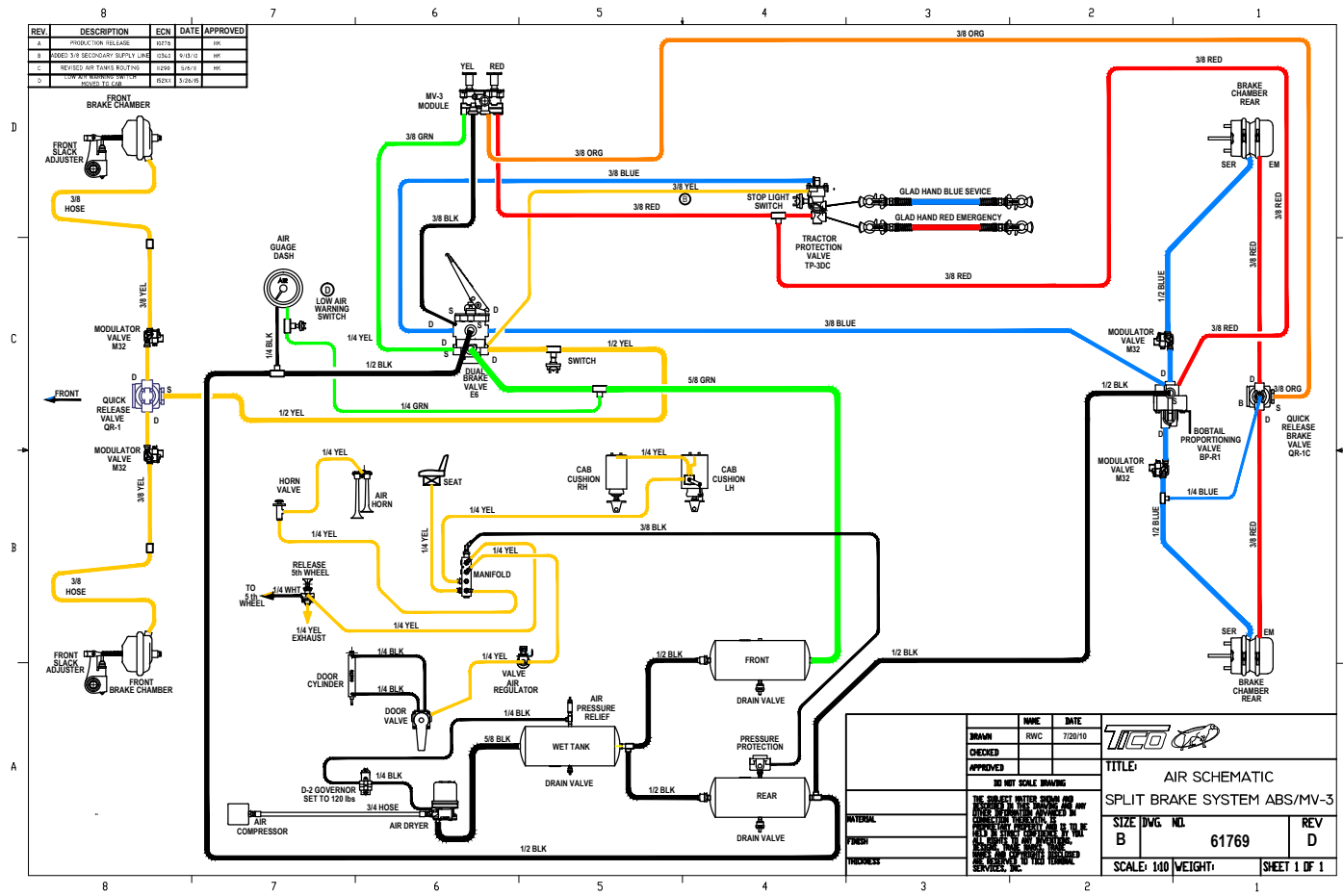
8 7 6 5 4 3 2 1

| REV. | DESCRIPTION | ENR. | DATE | APPROVED |
|------|------------------------------|------|---------|----------|
| A | PRODUCTION RELEASE | HBS | JRH/MS | JK |
| B | REVISED AIR TANKS ROUTING | HE90 | 5/20/10 | JK |
| C | REVISED TUBES TO CHECK VALVE | HAZ7 | 1/28/14 | MS |



| | | | |
|--|--|---|--|
| | | AIR SCHEMATIC SPLIT BRAKE SYSTEM ABS | |
| TITLE: | | SIZE: DWG. NO. 61702 | |
| DRAWN: | | REV: C | |
| CHECKED: | | SCALE: 1/10 WEIGHT: | |
| APPROVED: | | SHEET 1 OF 1 | |
| THE SUBJECT MATTER SHOWN AND ANY DIMENSIONS THEREIN ARE TO BE CONSIDERED APPROXIMATE UNLESS OTHERWISE SPECIFIED. THE USER SHALL BE RESPONSIBLE FOR VERIFYING ALL DIMENSIONS AND INTERFERENCES ARE CORRECTED TO FIT THE FINAL DESIGN. TICO SERVICES, INC. | | | |

| REV | DESCRIPTION | ECN | DATE | APPROVED |
|-----|------------------------------------|-------|----------|----------|
| A | PRODUCTION RELEASE | 12174 | 11/11/10 | RP |
| B | MODEL 3-8 SECONDARY SUPPLY LINE | 12144 | 9/14/10 | RP |
| C | REVISED AIR TANKS ROUTING | 12290 | 3/27/11 | RP |
| D | NEW WET TANK TOP FOR MODELS TO 428 | 125X1 | 3/25/12 | |



| DRAWN | NAME | DATE |
|----------|------|---------|
| RWC | RWC | 7/20/10 |
| CHECKED | | |
| APPROVED | | |

30 NET SCALE DRAWING

THE SUBJECT MATTER SHOWN AND DESCRIBED HEREIN IS THE PROPERTY OF TITCO. IT IS TO BE KEPT IN CONFIDENCE AND NOT TO BE REPRODUCED OR TRANSMITTED IN ANY FORM OR BY ANY MEANS, ELECTRONIC OR MECHANICAL, INCLUDING PHOTOCOPYING, RECORDING, OR BY ANY INFORMATION STORAGE AND RETRIEVAL SYSTEM, WITHOUT THE WRITTEN PERMISSION OF TITCO SERVICES, INC.

TITCO

TITLE: AIR SCHEMATIC
SPLIT BRAKE SYSTEM ABS/MV-3

SIZE DWG. NO. 61769 REV D

SCALE: 1/40 WEIGHT: SHEET 1 OF 1