

DETAIL A  
SCALE 1 : 3

DETAIL B  
SCALE 1 : 6

DETAIL C  
SCALE 1 : 3

DETAIL E  
SCALE 1 : 2

DETAIL D  
SCALE 1 : 3

DETAIL F  
SCALE 1 : 3

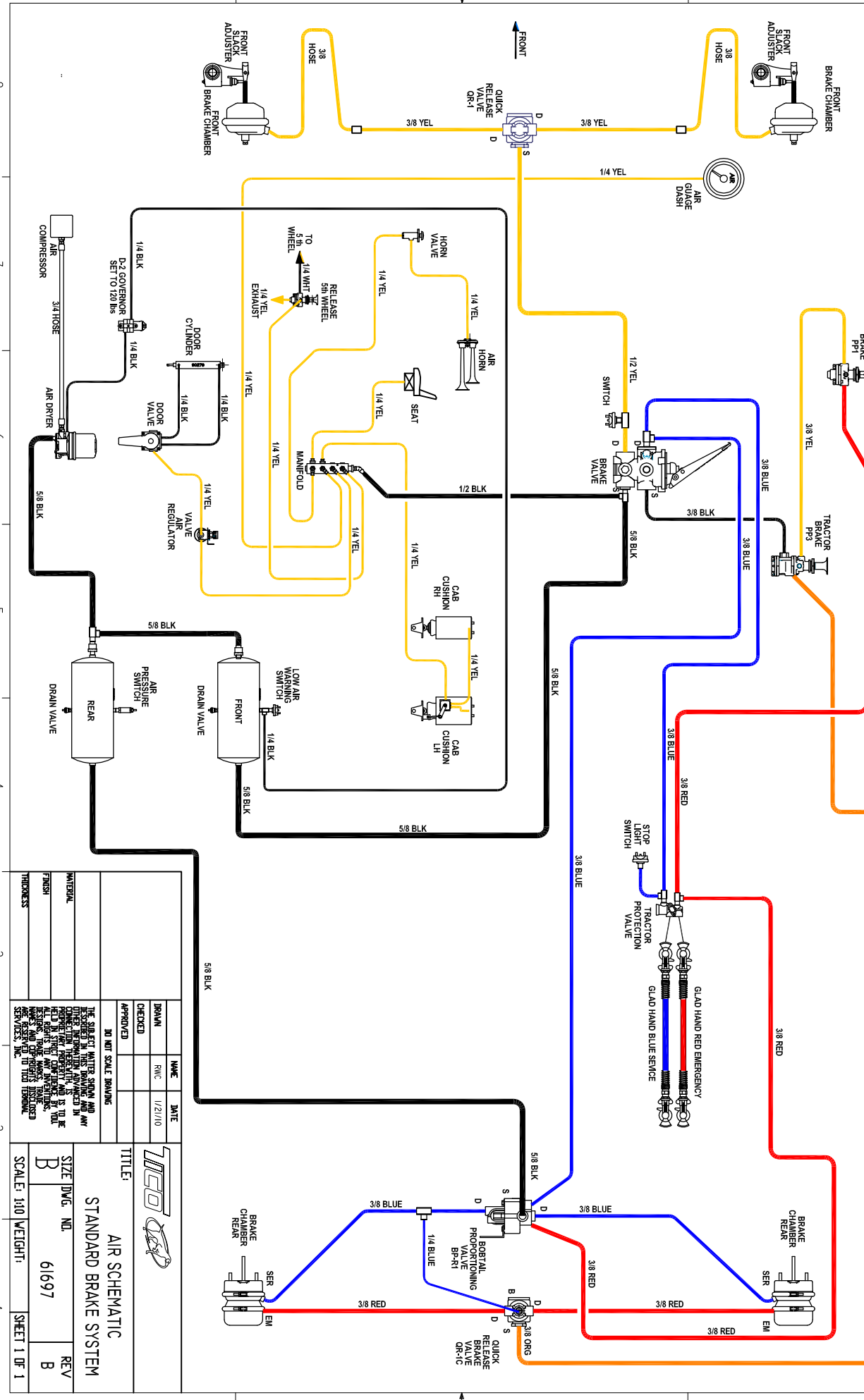
DETAIL G  
SCALE 1 : 4

DIMENSIONS ARE IN INCHES		NAME	DATE	 TICO/TERMINAL SERVICE 66 CYPRESS RIDGE DR. RIDGELAND, SC 29936 (843) 717-2226	
TOLERANCES:		DRAWN	SMB		3/24/15
DECIMAL:		CHECKED			
X.X ± 0.06 X.XX ± 0.03 X.XXX ± 0.005 ANGULAR: ± 0.5° FRACTIONAL: ± 1/32"		APPROVED			
DO NOT SCALE DRAWING				TITLE:	
INTERPRET GEOMETRIC TOLERANCING PER: ASME 14.5M-1994 THE SUBJECT MATTER SHOWN AND DESCRIBED IN THIS DRAWING AND ANY OTHER INFORMATION ADVANCED IN CONNECTION THEREWITH IS PROPRIETARY PROPERTY AND IS TO BE HELD IN STRICT CONFIDENCE BY YOU. ALL RIGHTS TO ANY INVENTIONS, DESIGNS, TRADE MARKS, TRADE NAMES AND COPYRIGHTS DISCLOSED ARE RESERVED TO TICO TERMINAL SERVICES, INC.				DWG. NO. <b>C</b> 71911-11	
FINISH				REV	
THICKNESS				SCALE: 1:1   WEIGHT: 3541.38   SHEET 1 OF 1	

TICO PRO-SPOTTER				
S/N:		AIR SYSTEM - OFF ROAD, CAST IRON GLADHANDS		71911
ITEM	PART #	QTY/M	DESCRIPTION	TASK
	71911-11	REF	AIR SYSTEM, 2 TANK	
	61697	REF	SCHEMATIC, STANDARD SYSTEM, 2 TANKS	
1	42087	1	ASSEMBLY, AIR TANK	
2	60023	1	GOVERNOR, D2 W/GASKET	
3	90026	1	BRAKE PEDAL	
4	90057	1	VALVE, BRAKE, E-3	
5	40572	1	VALVE, BOBTAIL/PROPORTIONING, BP-R1 W/BRACKET	
6	10592	1	VALVE, BRAKE, QUICK RELEASE, QR-1C	
7	40550	1	VALVE, BRAKE, QUICK RELEASE, QR-1	
8	90069	1	VALVE, TRACTOR PROTECTION	
9	90078	2	SWITCH, PRESSURE	
10	10949	1	MANIFOLD, ASSEMBLY, AIR	
11	90295	1	VALVE, AIR REGULATOR	
12	40776	1	SWITCH, LOW AIR PRESSURE (70 PSI)	
13	40022	1	VALVE, AIR PRESSURE RELIEF	
14	40029-1	1	VALVE, CHECK	
15	40817	1	ELBOW, 90°, 1/2" NPTM X 1/2" NPTF	
16	42064	1	PUSH CONNECT, 90° 1/2" NPTM X 1/2" TUBE	
17	40900	1	TEE, BRASS STREET 1/4" NPT	
18	90873	1	BUZZER, LOW AIR WARNING, 70 PSI	
19	61704	1	BRACKET, STAND OFF	
	90095	REF	VALVE, TRAILER BRAKE	
	90094	REF	VALVE, TRACTOR BRAKE	
20	50224	1	GLADHAND, BLUE, CAST IRON	
21	50225	1	GLADHAND, RED, CAST IRON	
22	50038-1	2	GLADHAND, BLUE, ALUMINUM	
23	50039-1	2	GLADHAND, RED, ALUMINUM	
24	10356	1	SPRING	
25	40080	2	CLAMP, TRAILER HOSE	
26	40687	2	HOSE ASSEMBLY, FRONT BRAKE CHAMBER	
27	50303	2	HOSE ASSEMBLY, TRAILER AIR, 3/8 X 15 FT	
28	40799	2	FITTING, CLOSE NIPPLE, BRASS, 1/2 NPT	
29	40899	2	FITTING, ELBOW, 45°, STREET, BRASS, 1/2 NPT	
30	62253	1	BRACKET, HOSE GUIDE	
REV	DATE	BY		SHEET
				1 OF 1

TICO MANUFACTURING - RIDGELAND, SC 29936

REV	DESCRIPTION	ECN	DATE	APPROVED
A	PRODUCTION RELEASE	1025	1/22/10	HK
B	REVISED AIR TANKS ROUTING	1220	5/10/11	HK



NAME	DATE
DRAWN: RMC	1/22/10
CHECKED:	
APPROVED:	

DO NOT SCALE DRAWING

THE SUBJECT MATTER SHOWN AND ANY DIMENSIONS THEREIN ARE NOT TO BE CONSIDERED AS A WARRANTY OR AS TO BE ALL RIGHTS RESERVED TO THE MANUFACTURER. THESE DIMENSIONS ARE RESERVED TO THE ORIGINAL SERVICES, INC.

**TITLE:** AIR SCHEMATIC  
**STANDARD BRAKE SYSTEM**

**SIZE DWG. NO:** 61697  
**REV B**

**SCALE:** 1/40 WEIGHT  
**SHEET 1 OF 1**