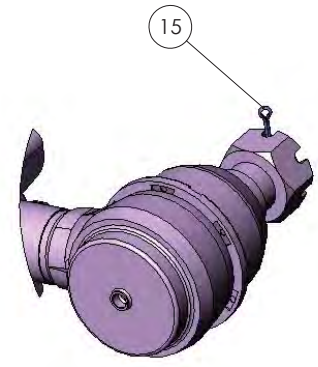
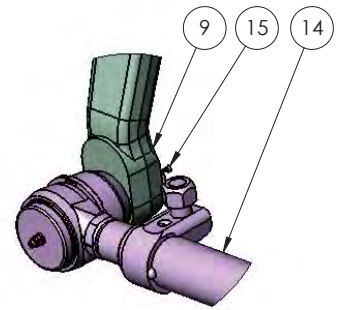
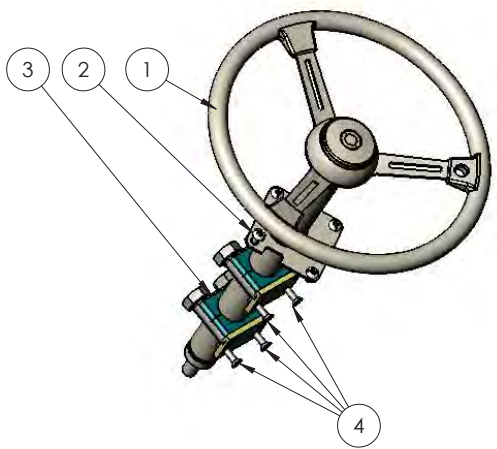
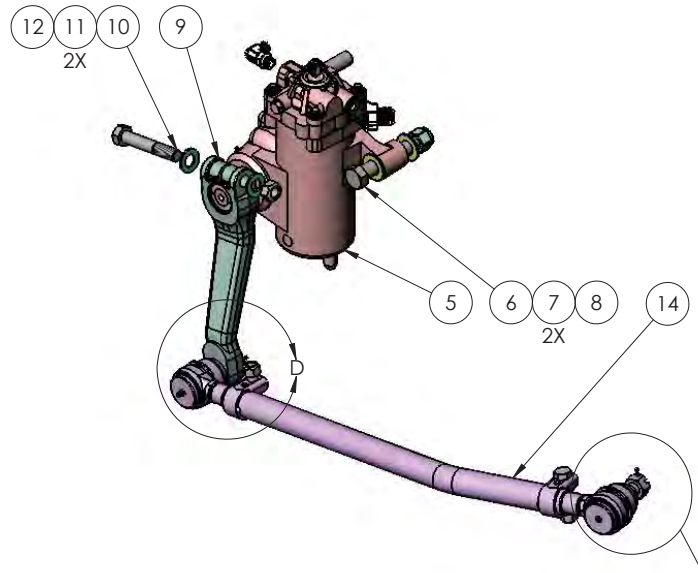


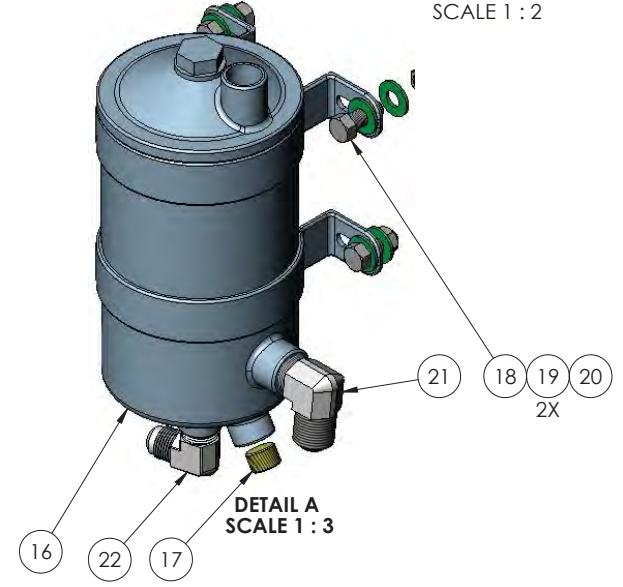
8 7 6 5 4 3 2 1



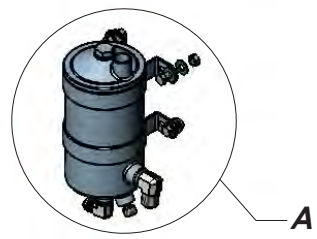
DETAIL B  
SCALE 1 : 2



DETAIL D  
SCALE 2 : 7.5




DETAIL A  
SCALE 1 : 3



A

8 7 6 5 4 3 2 1

|  |  |   |                 |  |          |
|--|--|---|-----------------|--|----------|
| DIMENSIONS ARE IN INCHES                             |  | NAME  | DATE            |  TICO/TERMINAL SERVICE<br>66 CYPRESS RIDGE DR.<br>RIDGELAND, SC 29936<br>(843) 717-2226 |          |
| TOLERANCES:  |  | DRAWN   | LP              |  | 09/04/12 |
| DECIMAL:   |  | REVISED   | DFM             |  | 2/8/2016 |
| X.X ± 0.1250   |  | APPROVED  |                 |  |          |
| X.XX ± 0.0625  |  | DO NOT SCALE DRAWING  |                 | TITLE:   |          |
| X.XXX ± 0.0313                                       |  | THE SUBJECT MATTER SHOWN AND DESCRIBED IN THIS DRAWING AND ANY OTHER INFORMATION ADVANCED IN CONNECTION THEREWITH, IS PROPRIETARY PROPERTY AND IS TO BE HELD IN STRICT CONFIDENCE BY YOU. ALL RIGHTS TO ANY INVENTIONS, DESIGNS, TRADE MARKS, TRADE NAMES AND COPYRIGHTS DISCLOSED ARE RESERVED TO TICO TERMINAL SERVICES, INC. |                 | STEERING SYSTEM  |          |
| ANGULAR: ± 1°  |  | SIZE  | DWG. NO.        | REV  |          |
| FRACTIONAL: ± 1/16"                                  |  | <b>B</b>  | <b>71862-E1</b> |  |          |
| INTERPRET GEOMETRIC TOLERANCING PER: ASME 14.5M-1994 |  | SCALE: 1:8  | WEIGHT:         | SHEET 1 OF 1   |          |
| MATERIAL   |  |   |                 |  |          |
| FINISH   |  |   |                 |  |          |
| THICKNESS  |  |   |                 |  |          |

| TICO PRO-SPOTTER |             |                               |  |              |
|------------------|-------------|-------------------------------|--|--------------|
| S/N:             |             | STEERING SYSTEM SHEPPARD GEAR |  | 71682        |
| ITEM             | PART #      | QTY/M                         | DESCRIPTION  |              |
|                  | 71156-E1    | REF                           | STEERING SYSTEM SHEPPARD GEAR                        |              |
|                  | 61916       | REF                           | PUMP, STEERING, 4 GPM, 2150 PSI, FLOW CONTRL, IXETIC |              |
|                  | 60212       | REF                           | GASKET, HYDRAULIC PUMP                               |              |
|                  | 80175       | REF                           | BOLT, SHS, 10 MM X 1.50 X 30 MM LONG                 |              |
|                  | 42006       | REF                           | FITTING, STRAIGHT, 1/2" O-RING X 1/2" JIC            |              |
|                  | 10624       | REF                           | FITTING, 90°, 3/4" O-RING X 3/4" JIC                 |              |
| 1                | 90624-1     | 1                             | ASSEMBLY, STEER COLUMN W/ HORN & TURN SIGNALS        |              |
| 2                | 80166       | 4                             | SCREW, SLOTTED, 5/16-18 X 1 1/4" LONG                |              |
| 3                | 91704       | 2                             | CLAMP ASSEMBLY, INTERNAL THREADED                    |              |
| 4                | 83209       | 4                             | SCREW, SOCKET, 3/8-16 X 1" LONG                      |              |
| 5                | 30222       | 1                             | ASSEMBLY, STEERING GEAR, SHEPPARD                    |              |
| 6                | 82476       | 3                             | BOLT, HEX, 7/8-9 X 3 1/4"                            |              |
| 7                | 85096       | 6                             | WASHER, HARDENED, 7/8"                               |              |
| 8                | 85030       | 3                             | NUT, LOCK, NYLON, 7/8-9 NC                           |              |
| 9                | 30143       | 1                             | PITMAN ARM, TRW                                      |              |
| 10               | 82948       | 1                             | BOLT, HEX, 3/4-16 X 4 1/2" LONG                      |              |
| 11               | 85095       | 2                             | WASHER, HARDENED, 3/4"                               |              |
| 12               | 85029       | 1                             | NUT, LOCK, NYLON, 3/4-16                             |              |
| 13               | 40477       | 2                             | FITTING, 45°#8, O-RING X #8 JIC                      |              |
| 14               | 91554       | 1                             | DRAGLINK   |              |
| 15               | 80148       | 2                             | COTTER PIN, 1/8"                                     |              |
| 16               | 40494       | 1                             | RESERVOIR, POWER STEERING                            |              |
| 17               | 80163       | 1                             | PLUG, ALLEN, 1/2"                                    |              |
| 18               | 82373       | 4                             | BOLT, HEX, 7/16-14 X 1" LONG                         |              |
| 19               | 85092       | 8                             | WASHER, HARDENED, 7/16"                              |              |
| 20               | 85026       | 4                             | NUT, LOCK, NYLON, 7/16-14                            |              |
| 21               | 40928       | 1                             | FITTING, 90°, 3/4" NPT X #12 JIC                     |              |
| 22               | 40502       | 1                             | FITTING, 90°, 1/2" NPT X #8 JIC                      |              |
| NOT SHOWN        | 60574       | 1                             | HOSE ASSEMBLY, PUMP TO RESERVOIR                     |              |
| NOT SHOWN        | 60416       | 1                             | HOSE ASSEMBLY, PUMP TO STEERING GEAR                 |              |
| NOT SHOWN        | 41227       | 1                             | HOSE ASSEMBLY, GEAR TO RESERVOIR                     |              |
|                  |             |                               |  |              |
|                  |             |                               |  |              |
| <b>REV</b>       | <b>DATE</b> | <b>BY</b>                     |  | <b>SHEET</b> |
| E                | 2/8/2016    | DFM                           |  | 1 OF 1       |

TICO MANUFACTURING - RIDGELAND, SC 29936