
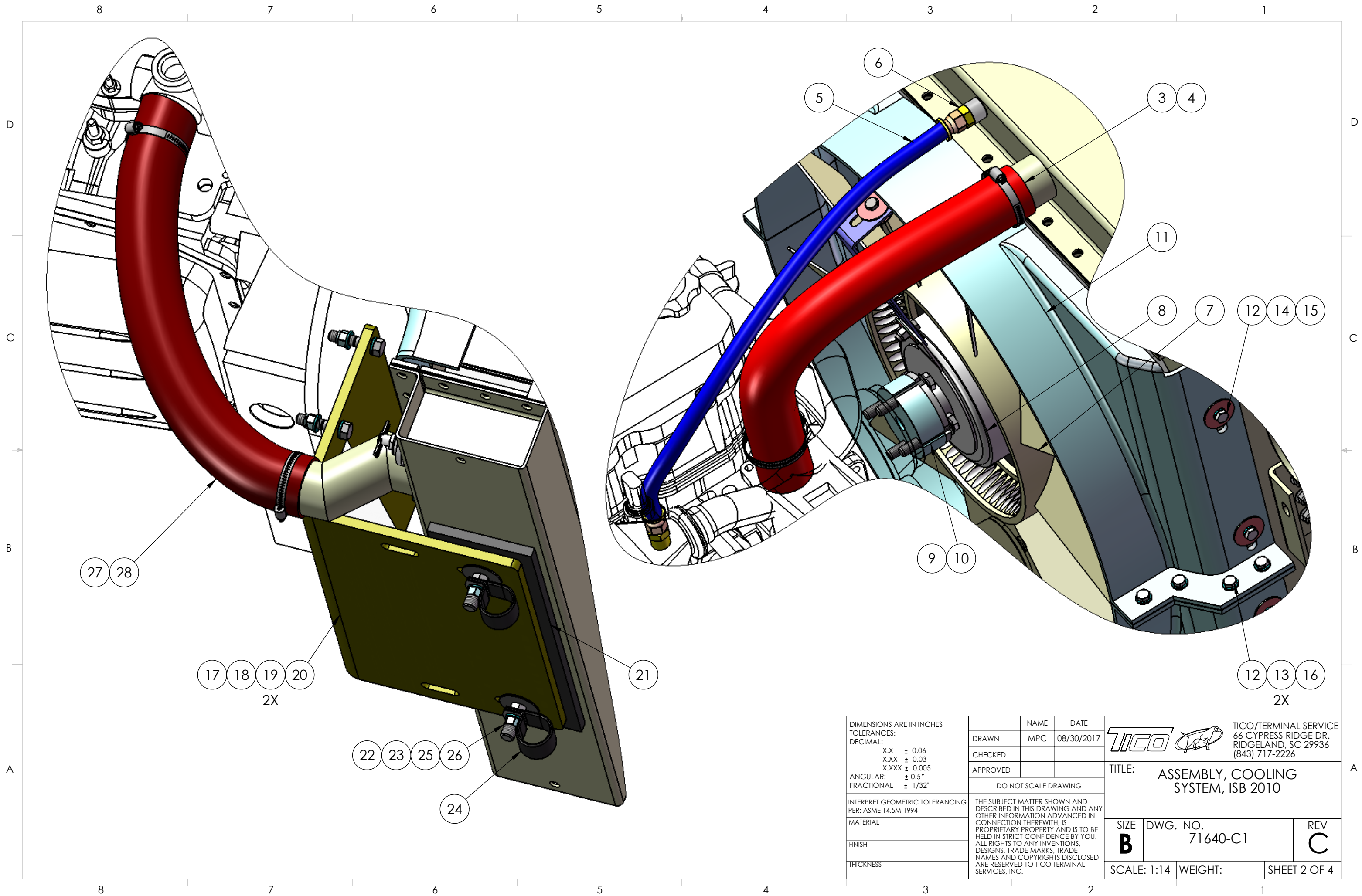


DIMENSIONS ARE IN INCHES		NAME	DATE	 TICO MANUFACTURING 66 CYPRESS RIDGE DR. RIDGELAND, SC 29936 (843) 717-2226
TOLERANCES:		DRAWN	MPC 08/30/2017	
DECIMAL:		CHECKED		
X.X ± 0.06 X.XX ± 0.03 X.XXX ± 0.005		APPROVED		
ANGULAR:		DO NOT SCALE DRAWING		TITLE: ASSEMBLY, COOLING SYSTEM, ISB 2010
FRACTIONAL ± 1/32"		THE SUBJECT MATTER SHOWN AND DESCRIBED IN THIS DRAWING AND ANY OTHER INFORMATION ADVANCED IN CONNECTION THEREWITH, IS PROPRIETARY PROPERTY AND IS TO BE HELD IN STRICT CONFIDENCE BY YOU. ALL RIGHTS TO ANY INVENTIONS, DESIGNS, TRADE MARKS, TRADE NAMES AND COPYRIGHTS DISCLOSED ARE RESERVED TO TICO TERMINAL SERVICES, INC.		SIZE B DWG. NO. 71640-C1 REV C
MATERIAL				SCALE: 1:14
FINISH				WEIGHT:
THICKNESS				SHEET 1 OF 4



DIMENSIONS ARE IN INCHES
TOLERANCES:
DECIMAL:
X.X ± 0.06
X.XX ± 0.03
X.XXX ± 0.005
ANGULAR:
± 0.5°
FRACTIONAL ± 1/32"

INTERPRET GEOMETRIC TOLERANCING PER: ASME 14.5M-1994

MATERIAL

FINISH

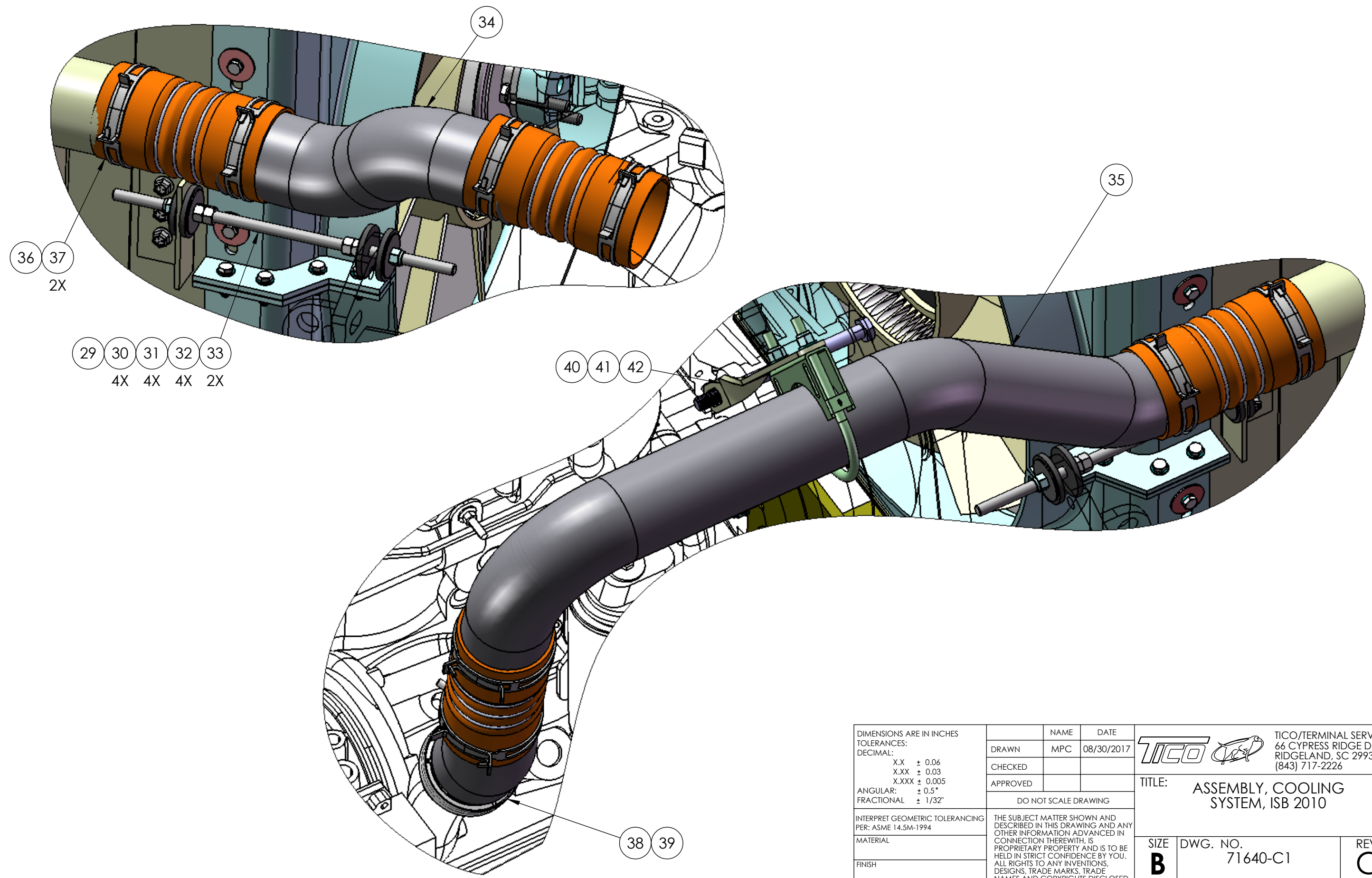
THICKNESS


	NAME	DATE
DRAWN	MPC	08/30/2017
CHECKED		
APPROVED		
DO NOT SCALE DRAWING		
<small>THE SUBJECT MATTER SHOWN AND DESCRIBED IN THIS DRAWING AND ANY OTHER INFORMATION ADVANCED IN CONNECTION THEREWITH, IS PROPRIETARY PROPERTY AND IS TO BE HELD IN STRICT CONFIDENCE BY YOU. ALL RIGHTS TO ANY INVENTIONS, DESIGNS, TRADE MARKS, TRADE NAMES AND COPYRIGHTS DISCLOSED ARE RESERVED TO TICO TERMINAL SERVICES, INC.</small>		

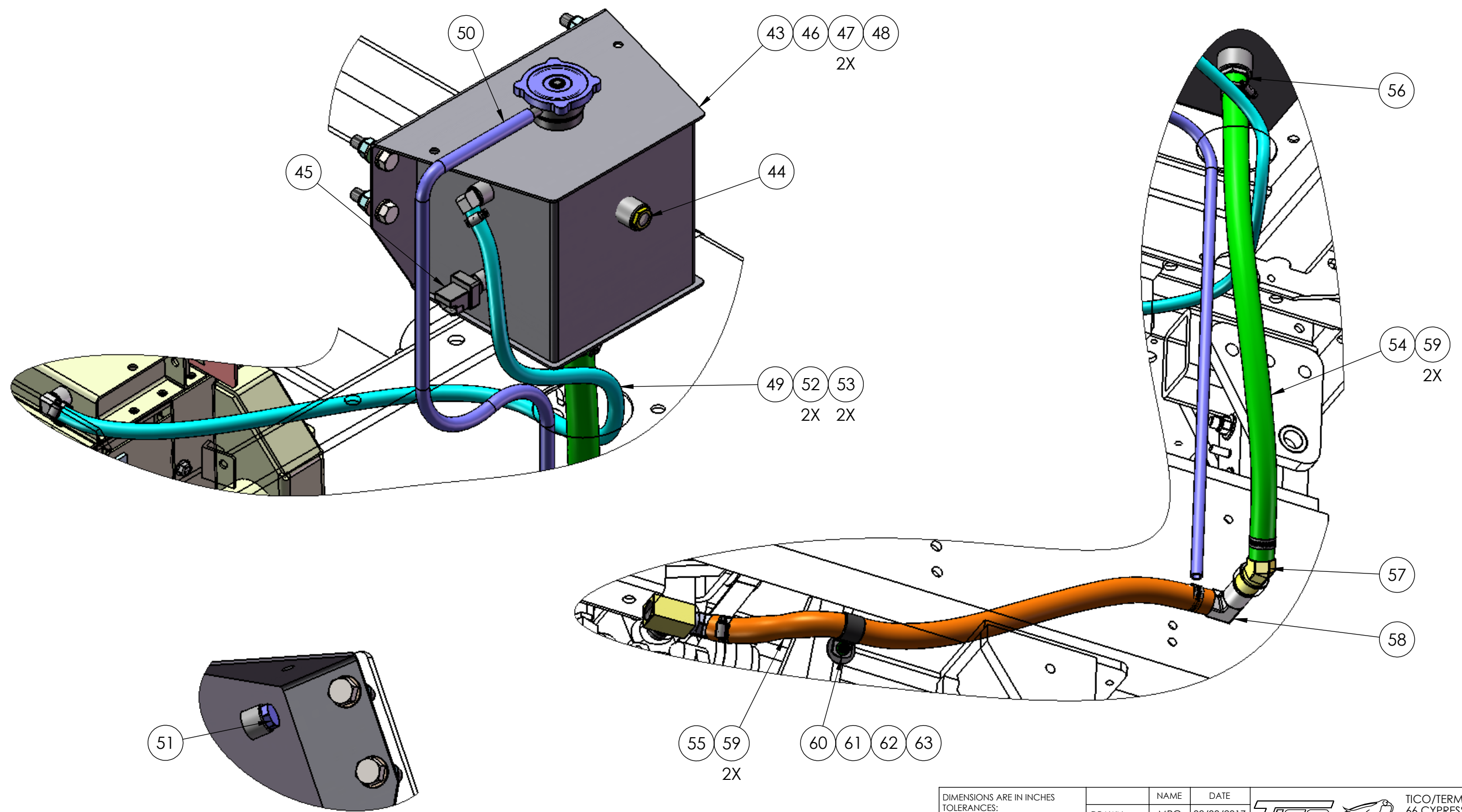



TICO/TERMINAL SERVICE
66 CYPRESS RIDGE DR.
RIDGELAND, SC 29936
(843) 717-2226

TITLE: ASSEMBLY, COOLING SYSTEM, ISB 2010		
SIZE B	DWG. NO. 71640-C1	REV C
SCALE: 1:14	WEIGHT:	SHEET 2 OF 4



DIMENSIONS ARE IN INCHES TOLERANCES: DECIMAL: X.X ± 0.06 X.XX ± 0.03 X.XXX ± 0.005 ANGULAR: ± 0.5° FRACTIONAL ± 1/32"	NAME	DATE	 TICO/TERMINAL SERVICE 66 CYPRESS RIDGE DR. RIDGELAND, SC 29936 (843) 717-2226	
	DRAWN	MPC		08/30/2017
	CHECKED			
	APPROVED			
INTERPRET GEOMETRIC TOLERANCING PER: ASME 14.5M-1994	DO NOT SCALE DRAWING		TITLE: ASSEMBLY, COOLING SYSTEM, ISB 2010	
MATERIAL	THE SUBJECT MATTER SHOWN AND DESCRIBED IN THIS DRAWING AND ANY OTHER INFORMATION ADVANCED IN CONNECTION THEREWITH, IS PROPRIETARY PROPERTY AND IS TO BE HELD IN STRICT CONFIDENCE BY YOU. ALL RIGHTS TO ANY INVENTIONS, DESIGNS, TRADE MARKS, TRADE NAMES AND COPYRIGHTS DISCLOSED ARE RESERVED TO TICO TERMINAL SERVICES, INC.		SIZE B DWG. NO. 71640-C1 REV C	
FINISH			SCALE: 1:14	
THICKNESS			WEIGHT:	
			SHEET 3 OF 4	



DIMENSIONS ARE IN INCHES TOLERANCES: DECIMAL: X.X ± 0.06 X.XX ± 0.03 X.XXX ± 0.005 ANGULAR: ± 0.5° FRACTIONAL ± 1/32"	NAME	DATE	 TICO/TERMINAL SERVICE 66 CYPRESS RIDGE DR. RIDGELAND, SC 29936 (843) 717-2226	
	DRAWN	MPC		08/30/2017
	CHECKED			
	APPROVED			
INTERPRET GEOMETRIC TOLERANCING PER: ASME 14.5M-1994	DO NOT SCALE DRAWING		TITLE: ASSEMBLY, COOLING SYSTEM, ISB 2010	
MATERIAL FINISH THICKNESS	THE SUBJECT MATTER SHOWN AND DESCRIBED IN THIS DRAWING AND ANY OTHER INFORMATION ADVANCED IN CONNECTION THEREWITH, IS PROPRIETARY PROPERTY AND IS TO BE HELD IN STRICT CONFIDENCE BY YOU. ALL RIGHTS TO ANY INVENTIONS, DESIGNS, TRADE MARKS, TRADE NAMES AND COPYRIGHTS DISCLOSED ARE RESERVED TO TICO TERMINAL SERVICES, INC.		SIZE B DWG. NO. 71640-C1 REV C	
	SCALE: 1:14	WEIGHT:	SHEET 4 OF 4	

TICO PRO-SPOTTER					
			ASSEMBLY, COOLING SYSTEM, ISB 2010	71640	
ITEM	PART #	QTY	DESCRIPTION	NOTE	
	71640-C1	REF	ASSEMBLY, COOLING SYSTEM, ISB 2010		
1	61889	1	ASSEMBLY, RADIATOR, 3/8" STUDS (WITH A/C)		
2	61644	1	BAFFLE, RADIATOR TOP		
3	61958	1	HOSE, COOLANT, SILICONE, 1-3/4" (RADIATOR INLET)		
4	24117	2	CLAMP, HOSE, WORM GEAR, 1-1/4 TO 2-1/4		
5	41010	1	HOSE, BLUE, 3/8 X 54 LONG (ENGINE TO RADIATOR)		
6	40091	2	FITTING, HOSE, STRAIGHT, 3/8 JIC TO 3/8 NPT		
7	61842	1	FAN, ENGINE, 22", 9 BLADE COMPOSITE, 3.75 POWER		
8	60423	1	CLUTCH FAN ASSEMBLY		
9	61852	1	SPACER, FAN, 25 MM		
10	60799-18	4	BOLT, FLANGE HEAD, SERRATED, 10 MM X 50 MM LONG		
11	60988	1	SHROUD, FAN		
12	82370	20	BOLT, HEX HEAD, 1/4-20 X 1 LONG (SHROUD SIDES)		
13	85089	16	WASHER, FLAT, 1/4		
14	85133	12	LOCKWASHER, 1/4		
15	80129	12	WASHER, FENDER, 1/4 ID X 1-1/4 OD		
16	85023	8	LOCKNUT, NYLON, 1/4-20		
17	61688	1	RADIATOR MOUNT		
18	82405	4	BOLT, HEX HEAD, 3/8-16 X 1-3/4 LONG (BRACKET TO ENGINE MOUNT)		
19	85091	8	WASHER, FLAT, 3/8		
20	85025	4	LOCKNUT, NYLON, 3/8-16		
21	60732-1	1	RUBBER PAD		
22	80346	2	WASHER, FENDER, 3/8 ID X 1-1/2 OD		
23	85014	2	JAM NUT, 3/8-16		
24	40593	2	P-CLAMP, 1"		
25	85091	2	WASHER, FLAT, 3/8		
26	85025	2	LOCKNUT, NYLON, 3/8-16		
27	61959	1	HOSE, COOLANT, SILICONE, 2" TO 2-1/4" X 25-1/2 LONG (RADIATOR OUTLET)		
28	24117	2	CLAMP, WORM GEAR, 1-1/4" TO 2-1/4"		
29	61603	2	ROD, THREADED, 3/8-16 X 12 LONG		
30	60857	8	MOUNT, RUBBER, 3/8 ID X 1-3/4 OD		
31	80346	8	WASHER, FENDER, 3/8 ID X 1-3/4 OD		
32	85014	8	JAM NUT, 3/8-16		
33	85025	4	LOCKNUT, NYLON, 3/8-16		
REV	DATE	BY		SHEET	1
C	08/30/2017	MPC		OF	2

TICO MANUFACTURING - RIDGELAND, SC 29936

TICO PRO-SPOTTER				
			ASSEMBLY, COOLING SYSTEM, ISB 2010	71640
ITEM	PART #	QTY	DESCRIPTION	NOTE
34	61609	1	TUBE, CAC, LEFT-HAND	
35	61610	1	TUBE, CAC, RIGHT-HAND	
36	40175	4	HOSE, HUMP, CAC, 3 ID X 6 LONG	
37	40185	8	CLAMP, SPRING HOSE, 2-3/4" TO 3-5/8"	
38	61611	1	TUBE, AIR-INTAKE (RIGHT-HAND REAR)	
39	3923060	1	CLAMP, V-BAND, 2-1/4" TO 2-3/4"	
NOT SHOWN	3883284	1	SEAL, "O"-RING	
40	30308	1	BRACKET, CAC, 7" SUPPORT (RIGHT-HAND TUBE TO ALTERNATOR)	
41	40005	1	CLAMP, MUFFLER, 3"	
42	80368	1	BOLT, HEX HEAD, PLATED, 12 MM X 160 MM LONG	
43	61936	1	TANK, SURGE	
44	40093	1	GLASS, SIGHT, 3/8 NPT	
45	60824	1	SENSOR FLUID LEVEL	
46	82407	4	BOLT, HEX HEAD, 1/2-13 X 1-3/4 LONG	
47	85093	8	WASHER, FLAT, 1/2	
48	85027	4	LOCKNUT, NYLON, 1/2-13	
49	41013	1	HOSE, SURGE TANK TO RADIATOR	
50	41017	1	HOSE, OVERFLOW, 3/8 X 55 LONG	
51	40092	1	PIPE PLUG, 3/8 NPT	
52	42239	2	FITTING, HOSE, 90°, BRASS, 3/8 BARB X 3/8 NPT	
53	24108	2	CLAMP, HOSE WORM GEAR 5/16 to 7/8	
54	41014	1	HOSE, HEATER, 1" X 32 LONG (SURGE TANK TO FRAME)	
55	41015	1	HOSE, FRAME TO WATER PUMP	
56	42110	1	FITTING, HOSE, STRAIGHT, STEEL, 1 BARB X 1 NPT	
57	40721	1	FITTING, HOSE, 45°, STEEL, 1 BARB X 1 NPT	
58	40722	1	FITTING, HOSE, 90°, STEEL, 1 BARB X 1 NPT	
59	42152	4	CLAMP, HOSE, WORM GEAR, 1-1/16 TO 1-1/4	
60	40593	4	P-CLAMP, 1"	
61	80346	4	WASHER, FENDER, 3/8 ID X 1-1/2 OD	
62	85090	4	WASHER, FLAT, 5/16	
63	85024	4	LOCKNUT, NYLON, 5/16-18	
NOT SHOWN	24110	1	CLAMP, HOSE, WORM GEAR, 5/16	
NOT SHOWN	30152	1	FITTING, ELBOW, 90°, 1/4 JIC X 1/4 NPT	
NOT SHOWN	24108	2	CLAMP, HOSE, WORM GEAR, 5/16 TO 7/8	
NOT SHOWN	41004	2	FITTING, ELBOW, 90°, 3/8 NPT X 1/4 NPT	
REV	DATE	BY		SHEET
C	08/30/2017	MPC		2
				OF
				2

TICO MANUFACTURING - RIDGELAND, SC 29936