

TICO PRO-SPOTTER

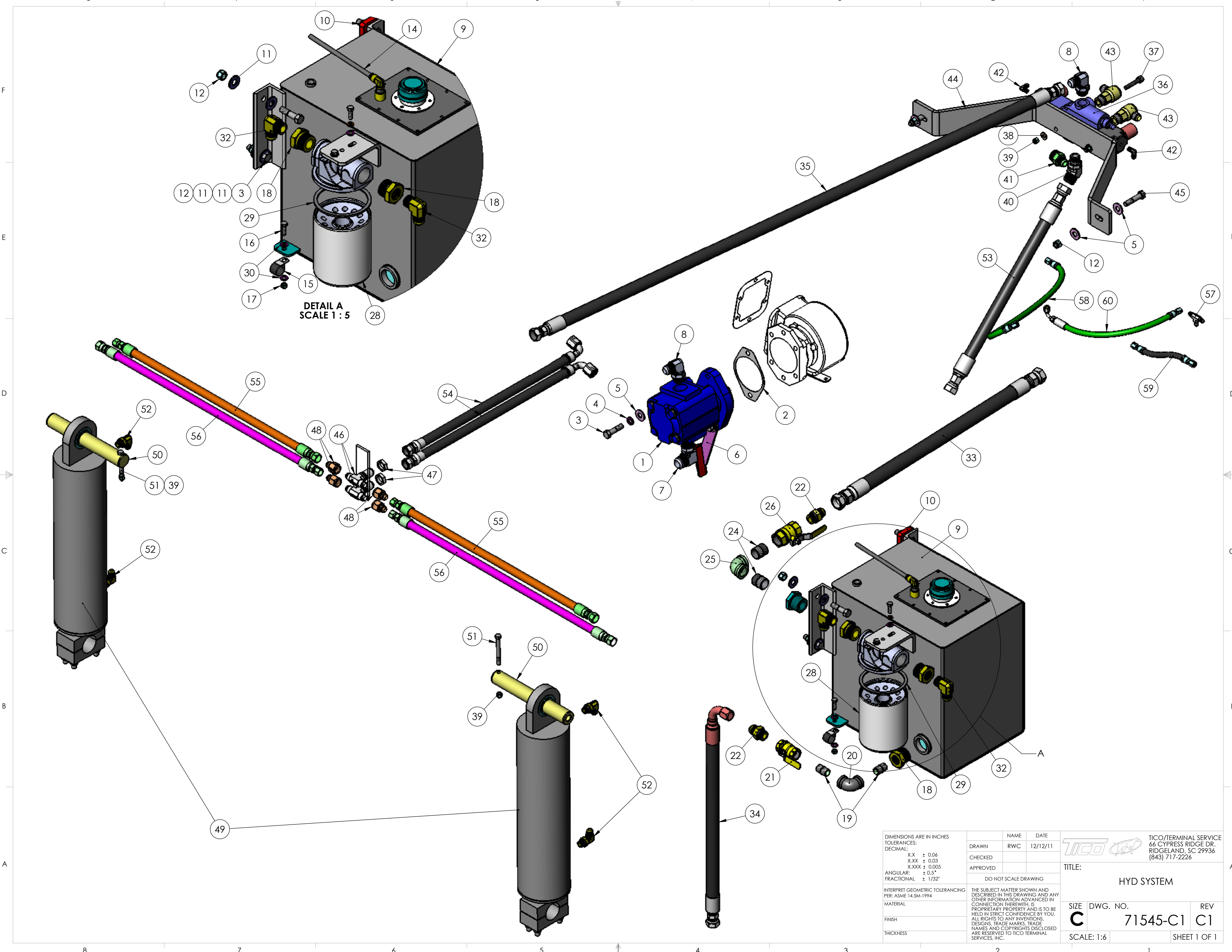
S/N: HYRAULIC SYSTEM-70K, 30 GPM, CABLE CONTROL 71615

ITEM	PART #	QTY/M	DESCRIPTION	TASK
	71545-C1	REF	HYD SYSTEM	
1	60943	1	PUMP, 16 GPM	
2	60943-1	REF	GASKET, PUMP	
3	82418	2	BOLT, HEX, 1/2-13 NC X 2 LG	
4	85137	2	LOCKWASHER, 1/2	
5	85115	6	WASHER, FLAT, 1/2	
6	90921	1	SUPPORT, PTO	
7	40465	1	FITTING, 90°, 1" O-RING X #12 JIC, SUCTION	
8	10624	2	FITTING, 90°, 3/4" O-RING X #12 JIC, PRESSURE	
9	42059	1	TANK, HYDRAULIC, NON-VENTED CAP	
10	30174	1	SPACER, TANK MOUNT	
11	85104	4	WASHER, 1/2	
12	85027	4	NUT, NYLOCK, 1/2-13 NC	
13	40823	1	FITTING, 90°, BRASS, 3/8 TUBE X 3/8 NPT	
14	11004	3 FT	TUBING, AIR BRAKE, NYLON, BLACK, 3/8	
15	40593	1	P-CLAMP	
16	82371	3	BOLT, HEX, 5/16-18 NC X 1 LG	
17	85024	1	NUT, NYLOCK, 5/16 NC	
18	60549	3	REDUCER, 1 1/4 NPT X 3/4 NPT	
19	40815	2	NIPPLE, 3/4 NPT	
20	40845	2	ELBOW, 90°, 3/4 NPT	
21	40146	1	VALVE, SHUT OFF, 1 NPT	
22	40471	1	FITTING, STR, 3/4 NPT X #12 JIC	
23	41117	1	REDUCER, 1 1/4 NPT X 1 NPT	
24	41120	2	NIPPLE, 1 NPT	
25	40932	1	ELBOW, 90°, 1 NPT X 1"JIC	
26	40128	1	VALVE, SHUT OFF, 1 1/4 NPT	
27	60556-2	1	BASE, FILTER, HYDRAULIC	
28	60556-1	1	FILTER, HYDRAULIC	
29	1026037	1	SEAL	
30	85112	2	WASHER, 5/16	
31	85134	2	LOCKWASHER, 5/16	
32	40933	1	FITTING, 90°, 1 1/4" NPT X #16 JIC	
33	41125	1	HOSE, HYD, 1" X 25.5"LG SUCTION, TANK TO PUMP	
34	41179	1	HOSE, HYD, 3/4" X 24"LG, TANK TO FILTER	
35	41180	1	HOSE, HYD, 3/4" X 67"LG, FILTER TO CONTROL VALVE	
REV	DATE	BY		SHEET
				1 OF 2

TICO PRO-SPOTTER

S/N: HYRAULIC SYSTEM-70K, 30 GPM, CABLE CONTROL **71615**

ITEM	PART #	QTY/M	DESCRIPTION	TASK
36	60555-SB	1	VALVE, DIRECTION CONTROL, CABLE	
37	80171	2	SCREW, SOCKET, 3/8 X 2 LG	
38	85113	2	WASHER, 3/8	
39	85025	4	LOCKNUT, 3/8-16 NC	
40	10623	2	FITTING, 90°, 3/4 O-RING X #16 JIC	
41	42014	2	FITTING, STR, 3/4" O-RING X #12 JIC	
42	41065	1	FITTING, 90°, 3/4" O-RING X #16 JIC	
43	41187	2	ELBOW, 90°, 3/4" ORB X #10 JIC, SWIVEL	
44	61758-3	1	MOUNT PLATE, VALVE	
45	82429	2	BOLT, HEX, 1/2-13 X 2 1/4 LG	
46	50050	2	TEE, BULKHEAD - 5/8 JIC	
47	50050-2	2	NUT, 7/8-14 THREAD	
48	50050-1	4	ADAPTER, 5/8 JIC X 1/2 JIC	
49	30148-1	2	CYLINDER, 5" HYD, 15' STROKE	
50	30187-12	2	PIN, UPPER CYLINDER	
51	82482	2	BOLT, HEX, 3/8-16 X 3 1/2 LG	
52	40460	4	FITTING, 90°, 1/2 O-RING X 1/2 JIC	
53	41219	1	HOSE, HYD, 1" X 28 1/2 LG, VALVE TO PUMP	
54	41182	2	HOSE, HYD, 5/8 X 24 LG, VALVE TO TEE	
55	41173	2	HOSE, HYD, 1/2 X 27 LG, CYL TO TEE	
56	41174	2	HOSE, HYD, 1/2 X 29 3/4 LG, CYL TO TEE	
57	NOT APPLICABLE			
58	41101	1	HOSE, HYD, 1 1/4 X 29 1/4 LG, OAL TANK TO PUMP	
59	40748	1	HOSE, HYD, 1 X 68 1/2, OAL FILTER TO VALVE	
60	41218	1	HOSE, HYD, 1 X 30, OAL TANK TO FILTER	
NOTE: SET VALVE PRESSURE RELIEF @ 2800 PSI				
REV	DATE	BY		SHEET
				2 OF 2



DETAIL A
SCALE 1 : 5

DIMENSIONS ARE IN INCHES
 TOLERANCES:
 DECIMAL:
 X.X ± 0.06
 X.XX ± 0.03
 X.XXX ± 0.005
 ANGULAR: ± 0.5°
 FRACTIONAL: ± 1/32"

INTERPRET GEOMETRIC TOLERANCING PER: ASME 14.5M-1994

FINISH

THICKNESS

NAME	DATE
RWC	12/12/11
CHECKED	
APPROVED	

DO NOT SCALE DRAWING

THE SUBJECT MATTER SHOWN AND DESCRIBED IN THIS DRAWING AND ANY OTHER INFORMATION ADVANCED IN CONNECTION THEREWITH IS PROPRIETARY PROPERTY AND IS TO BE HELD IN STRICT CONFIDENCE BY YOU. ALL RIGHTS TO ANY INVENTIONS, DESIGNS, TRADE MARKS, TRADE NAMES AND COPYRIGHTS DISCLOSED ARE RESERVED TO TICO TERMINAL SERVICES, INC.

TICO/TERMINAL SERVICE 66 CYPRESS RIDGE DR. RIDGELAND, SC 29936 (843) 717-2226		
TITLE: HYD SYSTEM		
SIZE	DWG. NO.	REV
C	71545-C1	C1
SCALE: 1:6	SHEET 1 OF 1	