

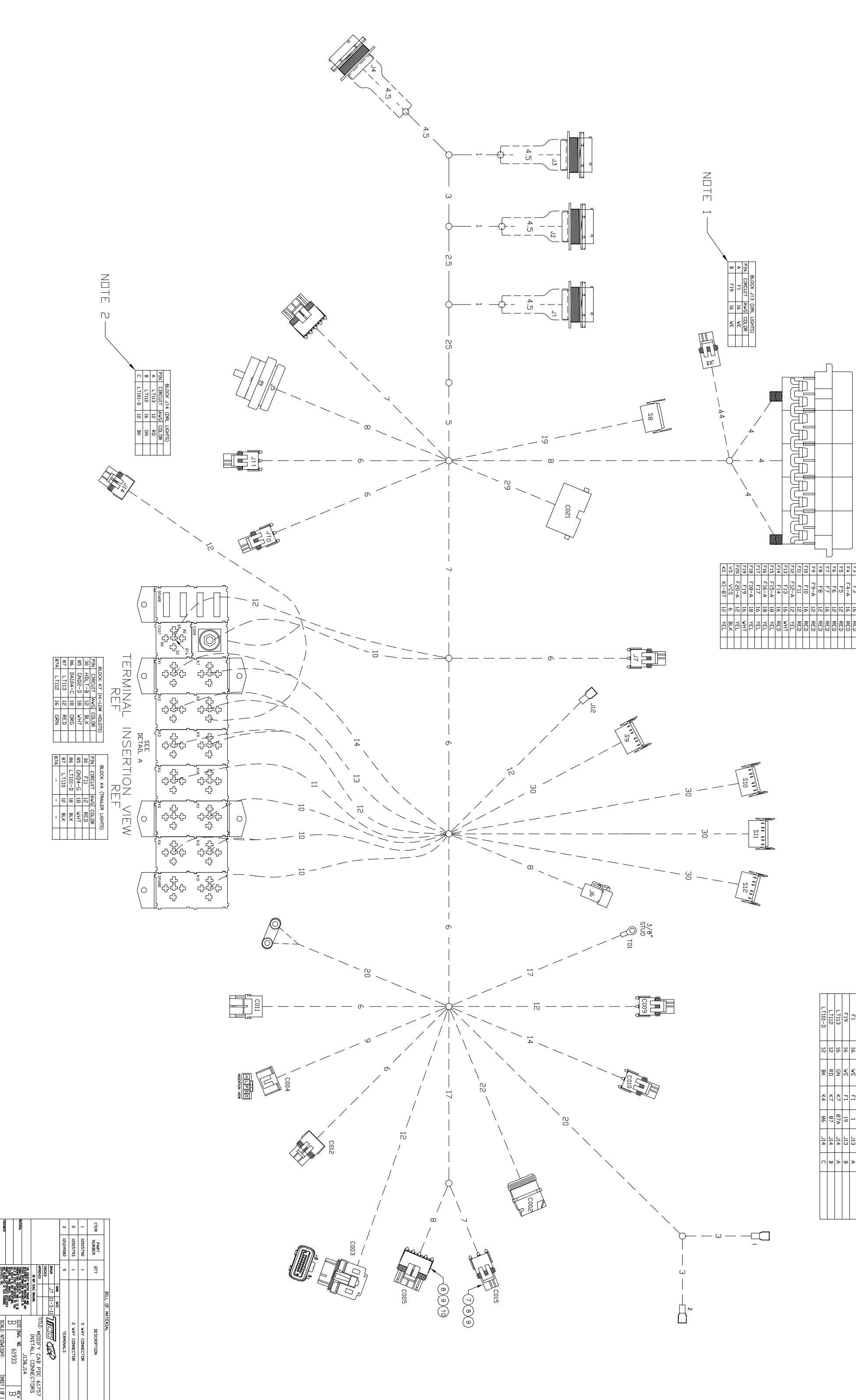
NOTES:
 1. INSTALL (2) CAVITY CONNECTOR ON SPARE FUSE WIRES F1 & F19 - BLOCK J13
 2. INSTALL (3) CAVITY CONNECTOR SPUIE WIRES LT113 & LT112 FOUND IN K7 - RELAY BLOCK,
 SPUIE WIRE LT101 FOUND IN K4 RELAY BLOCK

NOTE 1

BLOCK J13 (ORL LIGHTS)			
PIN	CIRCUIT	AVG	COLOR
A	F1	16	VE
B	F19	16	VE

BLOCK C001 (GISE PANEL)			
PIN	CIRCUIT	AVG	COLOR
F1	F1	16	WHT
F2	F2	12	RED
F3	F3	16	RED
F4	F4-A	16	RED
F5	F5	12	RED
F6	F6	12	RED
F7	F7	16	RED
F8	F8	12	RED
F9	F9-A	12	RED
F10	F10	16	RED
F11	F11	12	RED
F12	F12-A	12	YEL
F13	F13	16	WHT
F14	F14	16	RED
F15	F15	18	YEL
F16	F16-A	18	YEL
F17	F17	16	YEL
F18	F18-A	18	YEL
F19	F19	16	WHT
F20	F20-A	12	YEL
V5	V5S	6	BLK
KS	K1-87	12	YEL

CIRCUIT LISTING						
CIRCUIT ID	WIRE GAUGE	WIRE COLOR	FROM BLOCK	TO PIN	TO PIN	COMMENTS
F1	16	VE	F1	J13	A	
F19	16	VE	F1	J13	B	
LT113	16	GN	K7	87A	A	
LT112	12	RD	K7	87	B	
LT101-D	12	BK	K4	96	C	



NOTE 2

BLOCK J14 (ORL LIGHTS)			
PIN	CIRCUIT	AVG	COLOR
A	LT113	12	RD
B	LT112	16	GN
C	LT101-D	12	BK

TERMINAL INSERTION VIEW

BLOCK K7 (HI-LOW INDICATORS)			
PIN	CIRCUIT	AVG	COLOR
30	HBLT-B	12	BLK
85	GN2-D	18	WHT
86	DA104-C	18	DRG
87	LT113	12	RED
87A	LT112	16	GN

BLOCK K4 (TRUCKER LIGHTS)			
PIN	CIRCUIT	AVG	COLOR
85	GN4-G	18	WHT
86	LT101-D	18	BLK
87	LT110	12	BLK
87A	-	-	-

ITEM NUMBER	PART NUMBER	QTY	DESCRIPTION	BILL OF MATERIAL
1	1285792	1	3 WAY CONNECTOR	
2	1285793	1	2 WAY CONNECTOR	
3	1284982	5	TERMINALS	

SCALE: INCHES

DATE: 6/19/33

REV: B

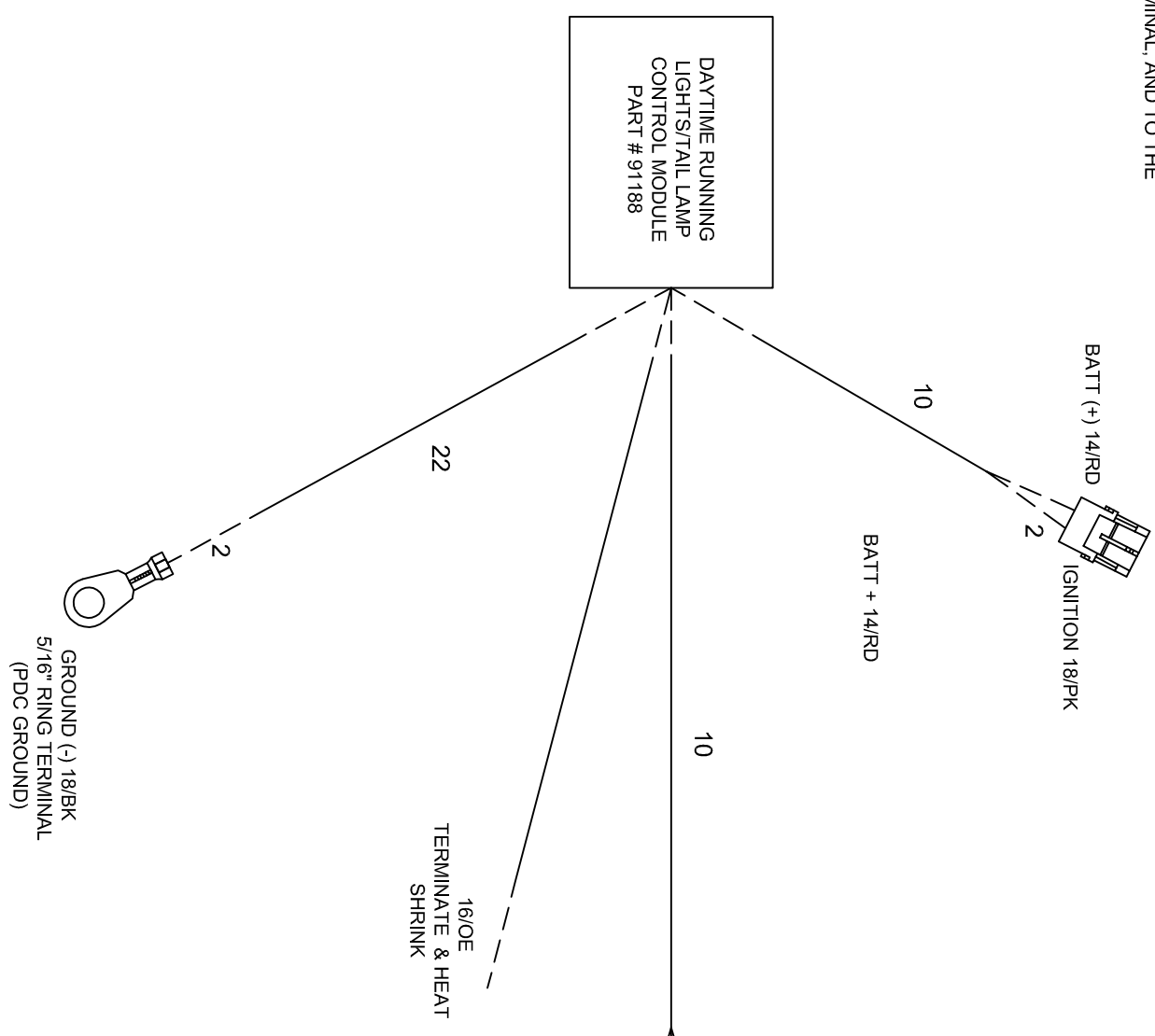
TITLE: MODIFY CAB POC 61757
 INSTALL CONNECTORS
 J13K,J14

REV	DESCRIPTION	ECN	DATE	BY
A	PRODUCTION RELEASE	11471	10/28/11	HK

- NOTES:
1. WIRE INSULATION TO BE SAE J1128-GXL UNLESS OTHERWISE NOTED.
 2. SOLID LINES INDICATE LOOM, DASHED LINES INDICATE NO COVERING, SPOT TAPE AS NEEDED.
 3. LOOM TO BE SPLIT, 300 DEGREE, BLACK WITH A GREY STRIPE PACKARD STYLE.
 4. ALL SPLICES TO BE MECHANICALLY CLIPPED, SOLDER BATH DIPPED, AND ENVIRONMENTALLY SEALED WITH SLEEVE. (REF RAYCHEM SCT)
 5. ALL HARNESS ENDS TO BE LABELED WITH THE BLOCK NUMBER AND DESCRIPTION APPROXIMATELY 3 INCHES BEHIND THE TERMINATING END.
 6. RING TERMINALS SHALL BE ENVIRONMENTALLY SEALED WITH SLEEVE.
 7. ALL SOCKET STYLE TERMINALS TO BE FILLED 1/3 FULL OF DIELECTRIC GREASE.
 8. ALL SPARE CIRCUITS TO BE TERMINATED USING RAYCHEM STYLE PD CAPS, UNLESS OTHERWISE STATED.
 9. ALL DIMENSIONS TO THE MATING FACE OF CONNECTOR OR TERMINAL, AND TO THE CENTER OF RING TERMINAL STUD.

BLOCK J13			
PIN	CIRCUIT	AWG	COLOR
A	BATT +	14	RD
B	ING +	18	PK

BLOCK J14			
PIN	CIRCUIT	AWG	COLOR
A	HIGH BEAM	18	WE
B	LOW BEAM	16	YW
C	TAIL LIGHT	18	BE



CIRCUIT LISTING

CIRCUIT ID	WIRE GAUG	WIRE COLOR	FROM BLOCK	TO PIN	BLOCK	COMMENTS
BATT+ (+12VDC)	14	RD	-	J13	A	
IGN (+12VDC)	18	PK	-	J13	B	
HIGH BEAMS	18	WE	-	J14	A	
LOW BEAMS	16	YW	-	J14	B	
TAIL LIGHTS	16	BE	-	J14	C	

ITEM	PART NUMBER	QTY	DESCRIPTION
1	91188	1	MODULE DAY TIME RUNNING LIGHTS
2	12010973	1	2 WAY CONNECTOR
3	12010717	1	3 WAY CONNECTOR
4		1	5/16" RING TERMINAL
5	12089188	2	TERMINAL FEMALE
6	12124580	3	TERMINAL FEMALE

BILL OF MATERIAL

THE SUBJECT MATTER SHOWN AND DESCRIBED IN THIS DRAWING AND ANY OTHER INFORMATION ADVANCED IN CONNECTION THEREWITH IS PROPRIETARY PROPERTY AND IS TO BE HELD IN STRICT CONFIDENCE BY YOU. ALL RIGHTS TO ANY INVENTIONS, DESIGNS, TRADE MARKS, TRADE NAMES AND COPYRIGHTS DISCLOSED ARE RESERVED TO TTD TERMINAL SERVICES, INC.

DO NOT SCALE DRAWING

DATE: 11-3-11
 DRAWN: JT
 CHECKED: []
 APPROVED: []

TITLE: **MODULE DAY TIME RUNNING LIGHTS**

SIZE DWG. NO. 61934
 SCALE: NTS | WEIGHT: []

REV A

SHEET 1 OF 1

