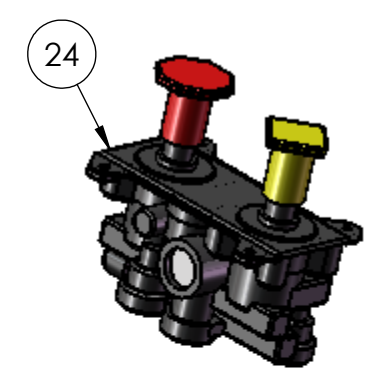
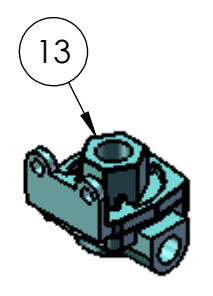


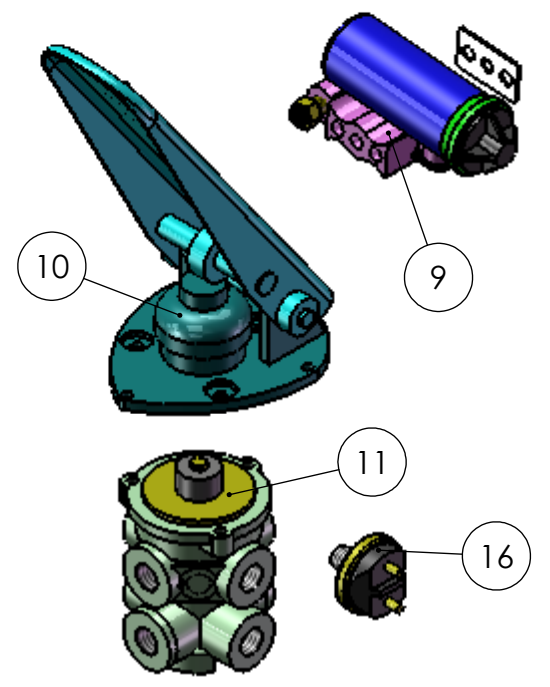
**DETAIL A
SCALE 1 : 4**



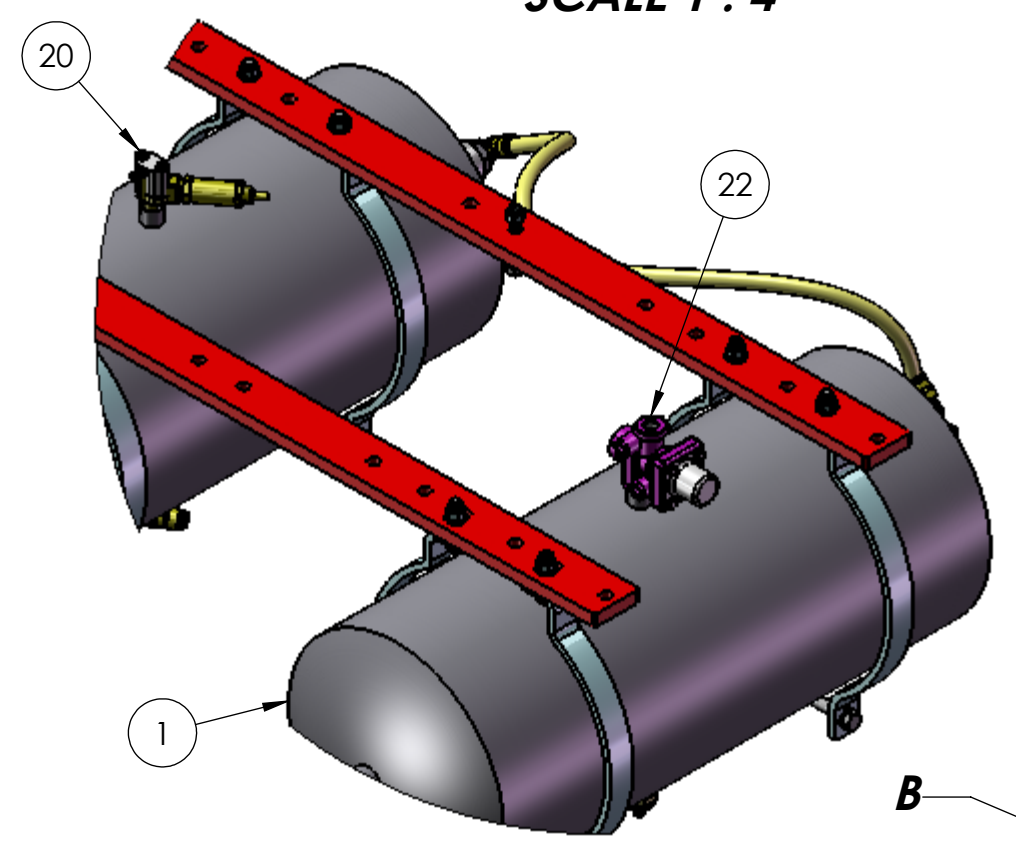
**DETAIL B
SCALE 1 : 4**



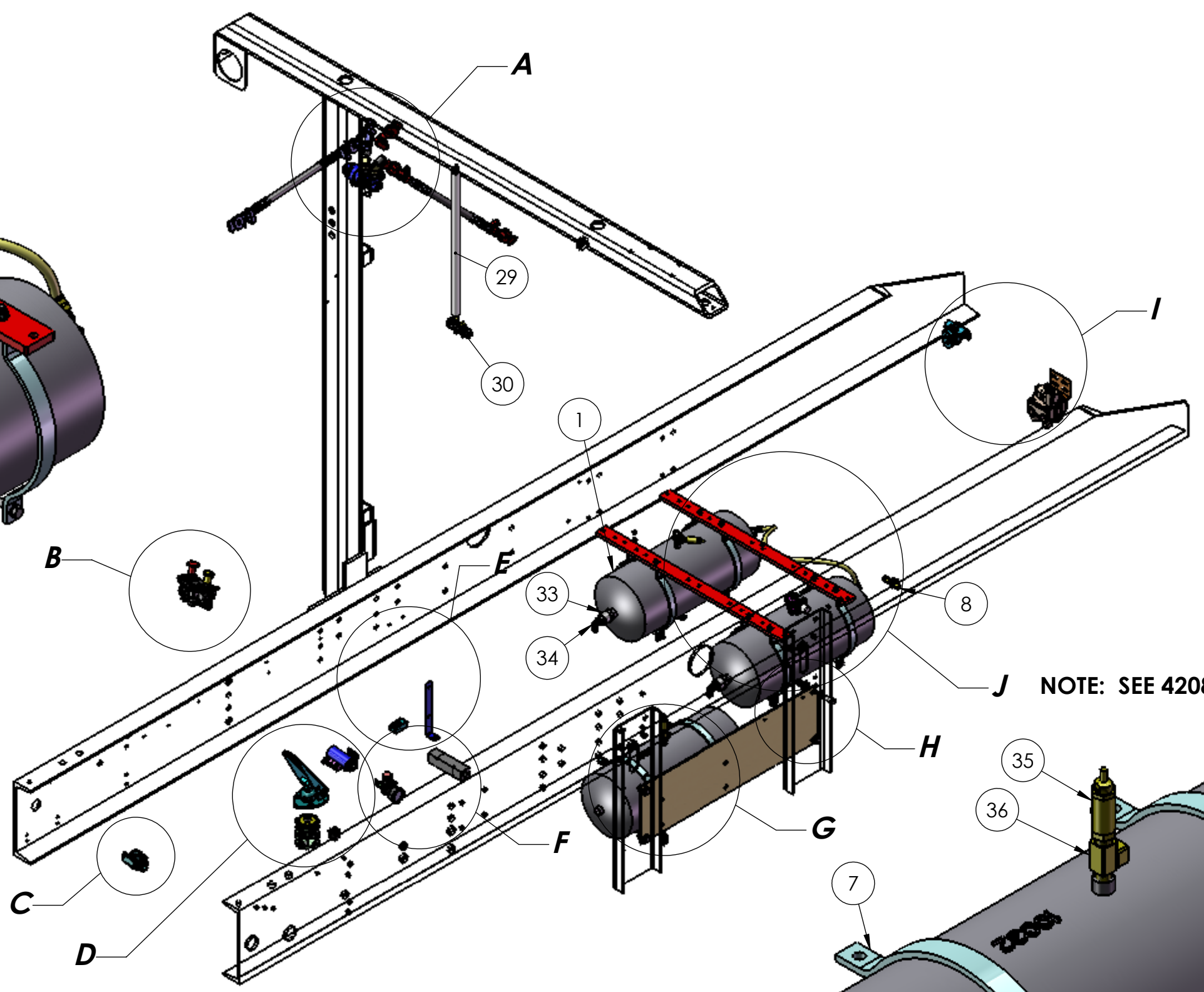
**DETAIL C
SCALE 1 : 4**



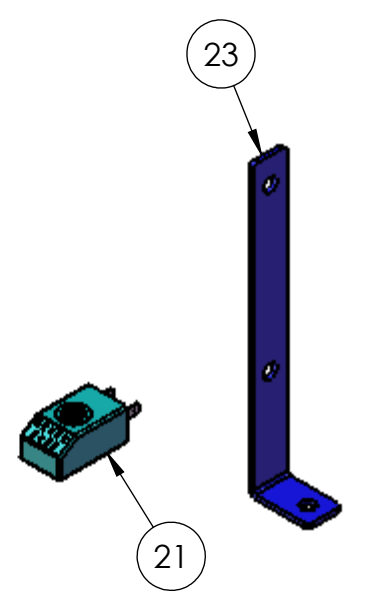
**DETAIL D
SCALE 1 : 4**



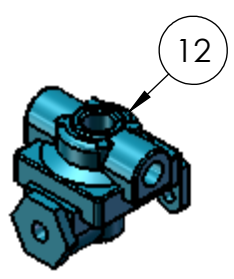
**DETAIL J
SCALE 1 : 6**



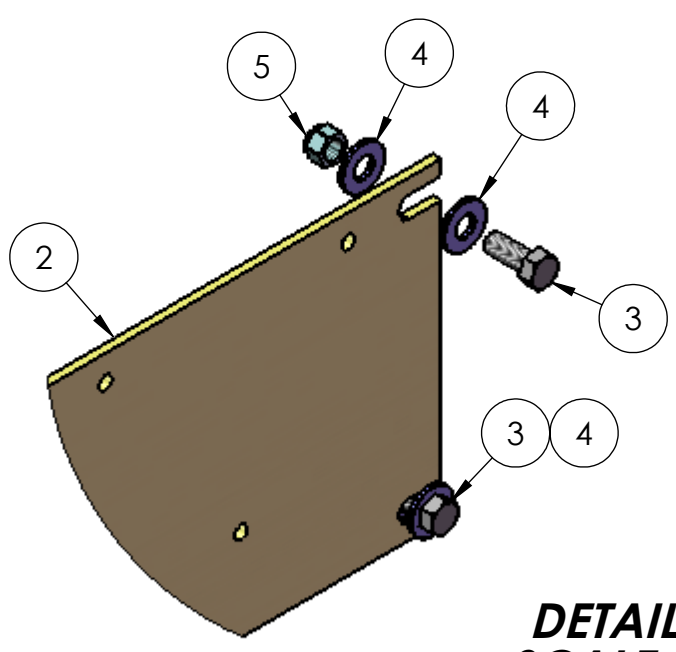
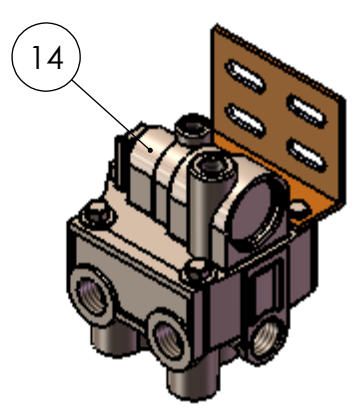
NOTE: SEE 42087 DWG FOR DETAILED BREAKDOWN



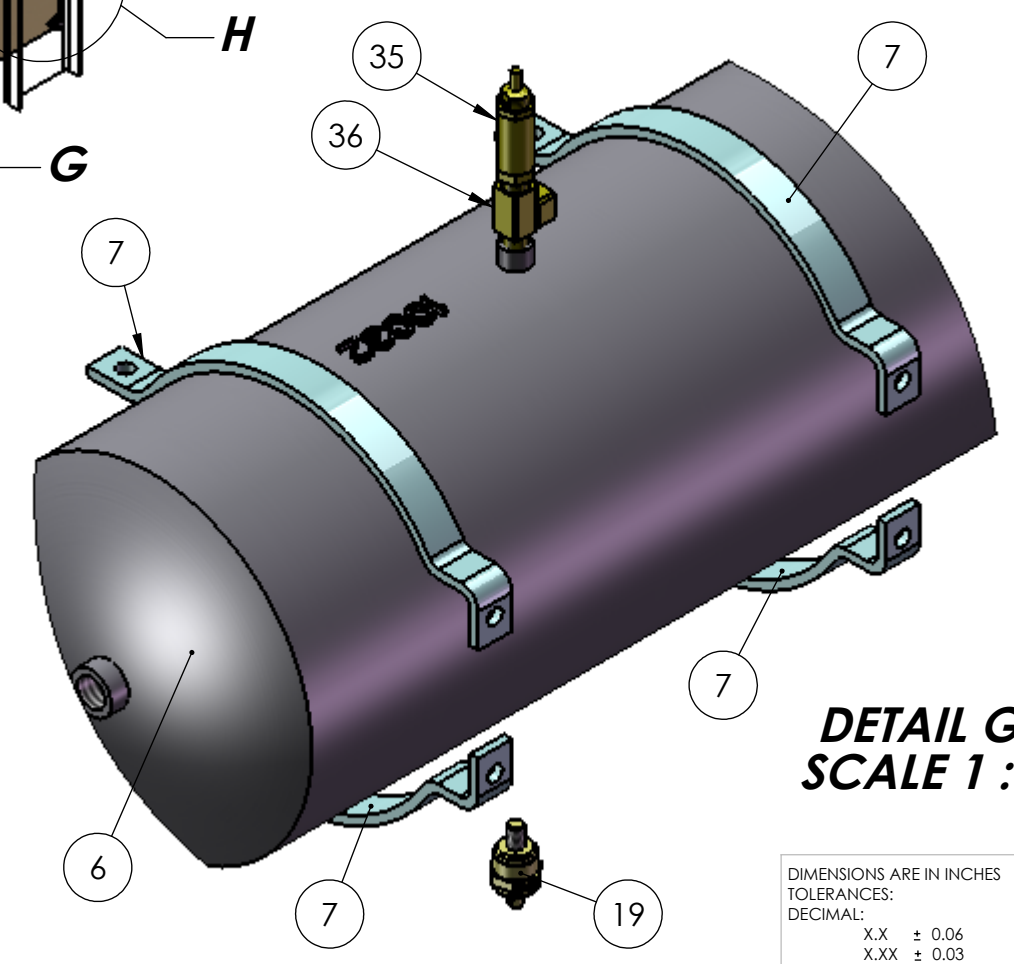
**DETAIL E
SCALE 1 : 4**



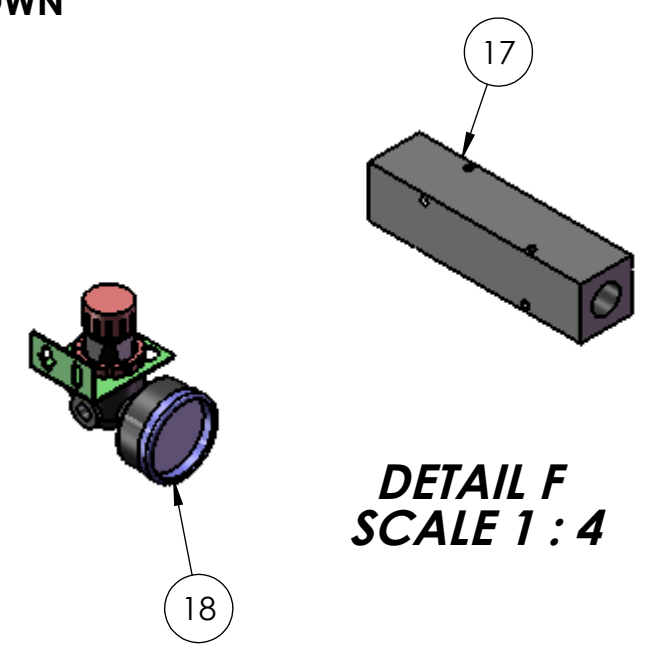
**DETAIL I
SCALE 1 : 4**



**DETAIL H
SCALE 1 : 4**



**DETAIL G
SCALE 1 : 4**

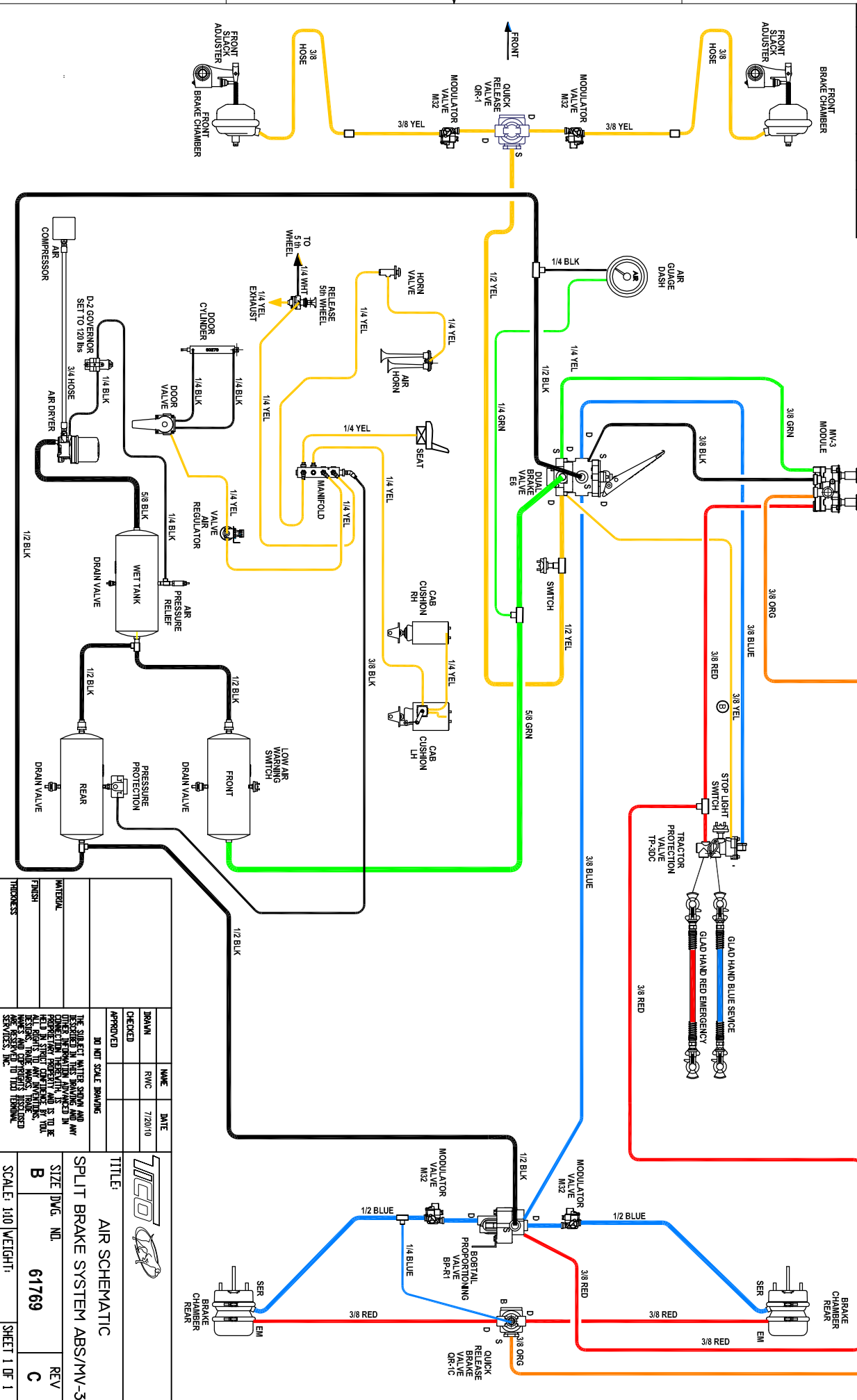


**DETAIL F
SCALE 1 : 4**

DIMENSIONS ARE IN INCHES		NAME	DATE	TICO/TERMINAL SERVICE 66 CYPRESS RIDGE DR. RIDGELAND, SC 29936 (843) 717-2226	
TOLERANCES:		DRAWN	RWC		8/03/12
DECIMAL:		CHECKED			
X.X ± 0.06 X.XX ± 0.03 X.XXX ± 0.005 ANGULAR: ± 0.5° FRACTIONAL: ± 1/32"		APPROVED			
DO NOT SCALE DRAWING				TITLE:	
INTERPRET GEOMETRIC TOLERANCING PER: ASME 14.5M-1994 MATERIAL FINISH THICKNESS				THE SUBJECT MATTER SHOWN AND DESCRIBED IN THIS DRAWING AND ANY OTHER INFORMATION ADVANCED IN CONNECTION THEREWITH IS PROPRIETARY PROPERTY AND IS TO BE HELD IN STRICT CONFIDENCE BY YOU. ALL RIGHTS TO ANY INVENTIONS, DESIGNS, TRADE MARKS, TRADE NAMES AND COPYRIGHTS DISCLOSED ARE RESERVED TO TICO TERMINAL SERVICES, INC.	
SCALE: 1:12		SIZE	DWG. NO.	REV	
		C	71570-B1	E1	
				SHEET 1 OF 1	

TICO PRO-SPOTTER				
S/N:		AIR SYSTEM-DOT-121, 3 TANKS, MV3		71570
ITEM	PART #	QTY/M	DESCRIPTION	TASK
	71570-B1	REF	AIR SYSTEM	
	61769	REF	SCHEMATIC-3 TANK, SPLIT SYS, DOT-121, MV3	
1	42087	1	ASSEMBLY, AIR TANK	
2	12336	1	PLATE, RESERVOIR MOUNTING	
3	82385	4	BOLT, HEX, 1/2-13 X 1 1/4 LG	
4	85104	8	WASHER, FLAT, 1/2, HARD	
5	85027	4	LOCKNUT, NYLOK, 1/2-13	
6	10032	1	RESERVIOR, AIR	
7	40393-1	4	BRACKET, AIR RESERVOIR MOUNT	
8	42084	1	VALVE, AIR TANK DRAIN	
9	60023	1	GOVERNOR, D2 W/GASKET	
10	90026	1	BRAKE PEDAL	
11	40547	1	VALVE, DUAL BRAKE, E-6	
12	10592	1	VALVE, BRAKE, QUICK RELEASE, QR-1C	
13	40550	1	VALVE, BRAKE, QUICK RELEASE, QR-1	
14	40572	1	VALVE, BOBTAIL/PROPORTIONING, BP-R1 W/BRACKET	
15	40635	1	VALVE, TRACTOR PROTECTION, TP-3DC	
16	90078	2	SWITCH, PRESSURE	
17	10949	1	MANIFOLD, ASS'Y AIR	
18	90295	1	VALVE, AIR REGULATOR	
19	40148	2	VALVE, AIR TANK DRAIN	
20	40776	1	SWITCH, LOW AIR PRESSURE, 70 PSI	
21	90873	1	BUZZER, LOW AIR WARNING, 70 PSI	
22	40771	1	VALVE, PRESSURE PROTECTION, 70 PSI	
23	61704	1	BRACKET, STAND OFF	
24	40570	1	VALVE, MV3	
25	50038-1	1	GLADHAND, CAST IRON, BLUE	
26	50039-1	1	GLADHAND, CAST IRON, RED	
27	50165	1	HOSE, ASSY, AIR BRAKE, DOUBLE GLADHANDS, 15FT	
28	50166	1	HOSE, ASSY, AIR BRAKE, DOUBLE GLADHANDS, 15FT	
29	10356	1	SPRING	
30	40080	2	CLAMP, TRAILER HOSE	
31	40799	2	NIPPLE, CLOSE, BRASS, 1/2" PIPE	
32	40899	2	FITTING, ELBOW 45°, BRASS STREET, 1/2 FEMALE X 1/2 MALE	
NOT SHOWN	40687	2	HOSE ASS'Y, FRONT BRAKE CHAMBER	
REV	DATE	BY		SHEET
				1 OF 2

REV	DESCRIPTION	EON	DATE	APPROVED
A	PRODUCTION RELEASE	10274		HK
B	ISSUED 3/8 SECONDARY SUPPLY LINE	10340	3/13/10	HK
C	REVISED AIR TANKS ROUTING	11250	3/16/11	HK



TITL AIR SCHEMATIC

SIZE DWG. N/D

REV 61769

SCALE 1:10 WEIGHT:

SHEET 1 OF 1

NAME	DATE
DRAWN	7/20/10
CHECKED	
APPROVED	

DO NOT SCALE DRAWING

RESPECTED IN THIS DRAWING AND ANY OTHER DRAWING THEREIN, IS TO BE PROTECTED FROM REPRODUCTION BY ALL RIGHTS TO ANY INVENTORS. EXCEPT WHERE SHOWN OTHERWISE, ALL RIGHTS TO ANY INVENTORS ARE RESERVED TO HIND TECHNICAL SERVICES, INC.