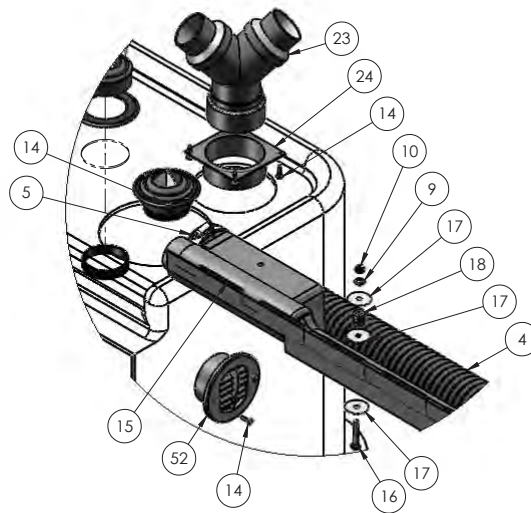
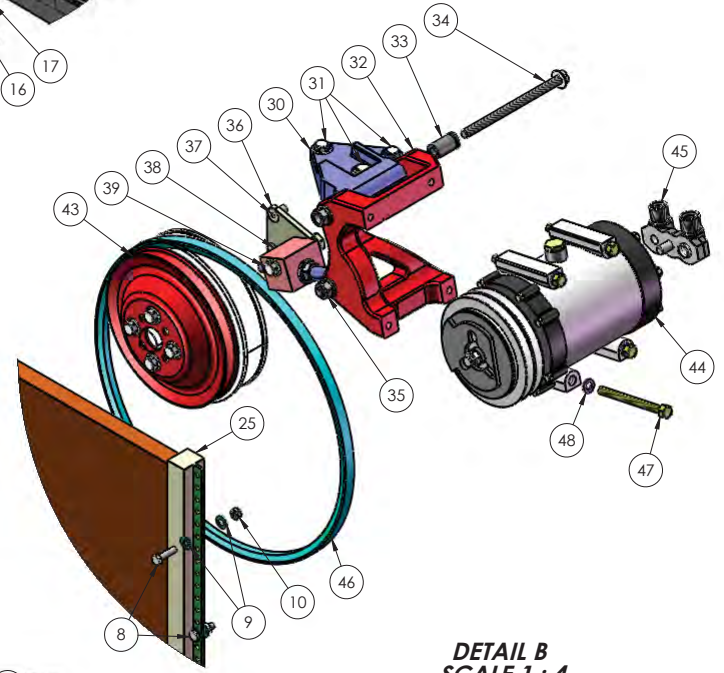


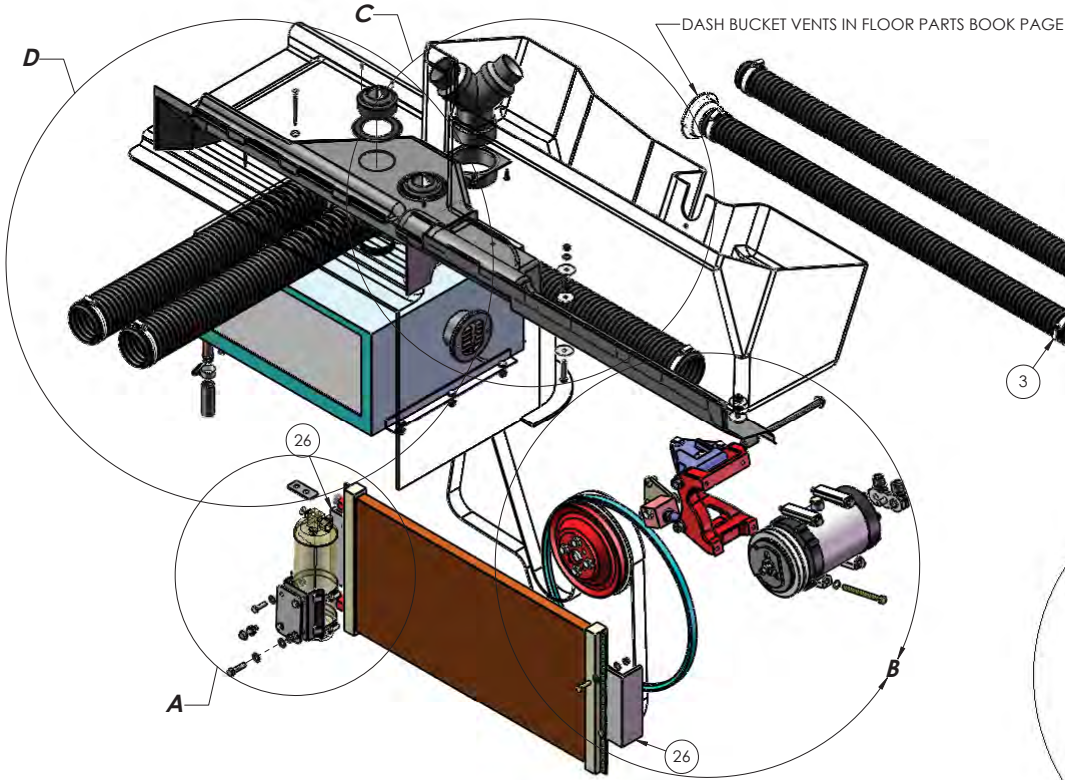
DETAIL D
SCALE 1 : 5



DETAIL C
SCALE 1 : 5



DETAIL B
SCALE 1 : 4



DETAIL A
SCALE 1 : 4

ALL DIMENSIONS ARE IN INCHES

TOLERANCES:

DECIMAL:	.XX ± 0.06
	.XXX ± 0.03
	.XXXX ± 0.005
ANGULAR:	± 0.5°
FRACTIONAL:	± 1/32"

INTERPRET GEOMETRIC TOLERANCING PER: ASME 14.5M-1994

MATERIAL:

FINISH:

THICKNESS:

NAME	DATE
RWC	11/12/12
CHECKED	
APPROVED	
DO NOT SCALE DRAWING	

		TICO/TERMINAL SERVICE 66 CYPRESS RIDGE DR. RIDGELAND, SC 29936 (843) 717-2226
TITLE:		
HEATER-A/C ASSY QSB		
SIZE	DWG. NO.	REV
C	71537-C1	C1
SCALE: 1:6	SHEET 1 OF 1	

TICO PRO-SPOTTER

HEATER - A/C ASSY, QSB

71537

ITEM	PART #	QTY/M	DESCRIPTION	TASK
	71537-C1	REF	HEATER- A/C ASSY, QSB	
1	90694	1	HEATER, A/C	
2	90694-3	2	DUCT, 2" FLEX X 3' LG	
3	24117	4	2" HOSE CLAMP	
4	90189-12	3	DUCT, 3" FLEX X 2' LG	
5	24120	6	CLAMP, HOSE, 3"	
6	90694-6	1	HEATER HOSE, 5/8" X 2"	
7	24111	1	CLAMP, HOSE, 5/8"	
8	82370	6	BOLT, HEX, 1/4-20 X 1" LG	
9	85089	12	WASHER, 1/4	
10	85023	6	NUT, NYLOCK, 1/4-20	
NOT SHOWN	90191	1	VALVE, WATER CONTROL	
11	90845	1	MANIFOLD DEFROSTER, LEFT	
12	80272	2	SCREW, WOOD, # 10 X 3 LG	
13	80302	2	FINISHING WASHER, # 10	
14	80262	7	SCREW, WOOD, 5-20 X 3/4 LG	
15	90846	1	MANIFOLD DEFROSTER, RIGHT	
16	82392	2	BOLT, HEX, 1/4-20 X 1 1/2 LG	
17	80129	6	WASHER, FENDER, 1/4 X 1 1/4" OD	
18	80303	2	GROMMET, RUBBER 1/2 X 5/8 X 5/16 HOLE	
19	91695	2	LOUVER, SWIVEL BALL	
20	91696	2	NUT, LOUVER	
21	91697	2	FLANGE, RING	
22	80375	4	SCREW, PAN HD, #4 x 1/2" LG, SS	
23	90857	1	"Y" CONNECTOR, 3" X 2" X 2"	
24	90694-2	1	ADAPTER HOSE, 3"	
25	60834	1	CONDENSER	
26	61698	2	BAFFLE ANGLE	
27	40643	1	RECEIVER DRIER	
28	40644	1	BRACKET, RECEIVER DRIER	
29	20104	1	MOUNT, BRACKET	
	40630-1	1	PLATE	
	20102	1	ANGLE	
REV	DATE	BY		SHEET
				1 OF 2

TICO PRO-SPOTTER				
HEATER - A/C ASSY, QSB				71537
ITEM	PART #	QTY/M	DESCRIPTION	TASK
30	3955040	1	SUPPORT, BASE	
31	3925344	3	BOLT, M10 X 1.50 X 30 LG	
32	4991080	1	MOUNT, COMPRESSOR	
33	3922565	1	SPACER	
34	3904987	1	BOLT, M10 X 1.50 X 150 LG	
35	3902662	2	NUT, M10 X 1.50	
36	4940787	1	BRACE, PLATE	
37	3286480	3	BOLT, M10 X 1.50 X 50 LG	
38	3958354	1	MOUNT, LINK	
39	3904446	1	BOLT, M10 X 1.50 X 70 LG	
40	3284313	1	LINK, ADJ	
41	3279043	2	NUT, M12 X 1.75	
42	3903464	1	BOLT, M10 X 1.50 X 40 LG	
43	3919624	1	PULLEY, VEE BELT, ACCESSORY DRIVE	
44	91603	1	A/C COMPRESSOR	
45	60833	1	MANIFOLD	
46	61840	1	BELT, VEE, 43 3/8 LG	
47	80343	4	BOLT, 8 MM X 1.25 X 95 MM LG	
48	85135	4	LOCKWASHER, 3/8	
49	82382	2	BOLT, HEX, 5/16-18 X 1 1/4" LG	
50	85112	4	LOCKWASHER, 5/16	
51	85024	4	NUT, NYLOCK, 5/16-18	
52	90874	1	LOUVER HEAT VENT	
53	12338	1	BRACKET, A/C HOSE CLIP	
NOT SHOWN	90754	1	SWITCH, A/C, ON/OFF	
NOT SHOWN	91519	1	SWITCH, BINARY NC	
NOT SHOWN	91520	1	HARNESS, A/C BINARY, A/C COMP	
NOT SHOWN	40641	1	SWITCH, TRINARY NC	
NOT SHOWN	61759	1	HARNESS, A/C TRINARY, A/C COMP	
NOT SHOWN	41220	1	HOSE, A/C BTM, CONDENSER TO FEM DRIER BOTTLE	
NOT SHOWN	41221	1	HOSE, A/C FLOOR, SM PORT TO MALE DRIER BOTTLE	
NOT SHOWN	41222	1	HOSE, A/C FLOOR, LG PORT TO COMPRESSOR SUCTION	
NOT SHOWN	41223	1	HOSE, A/C COMP DISCHARGE TO TOP CONDENSER	
REV	DATE	BY		SHEET
				2 OF 2