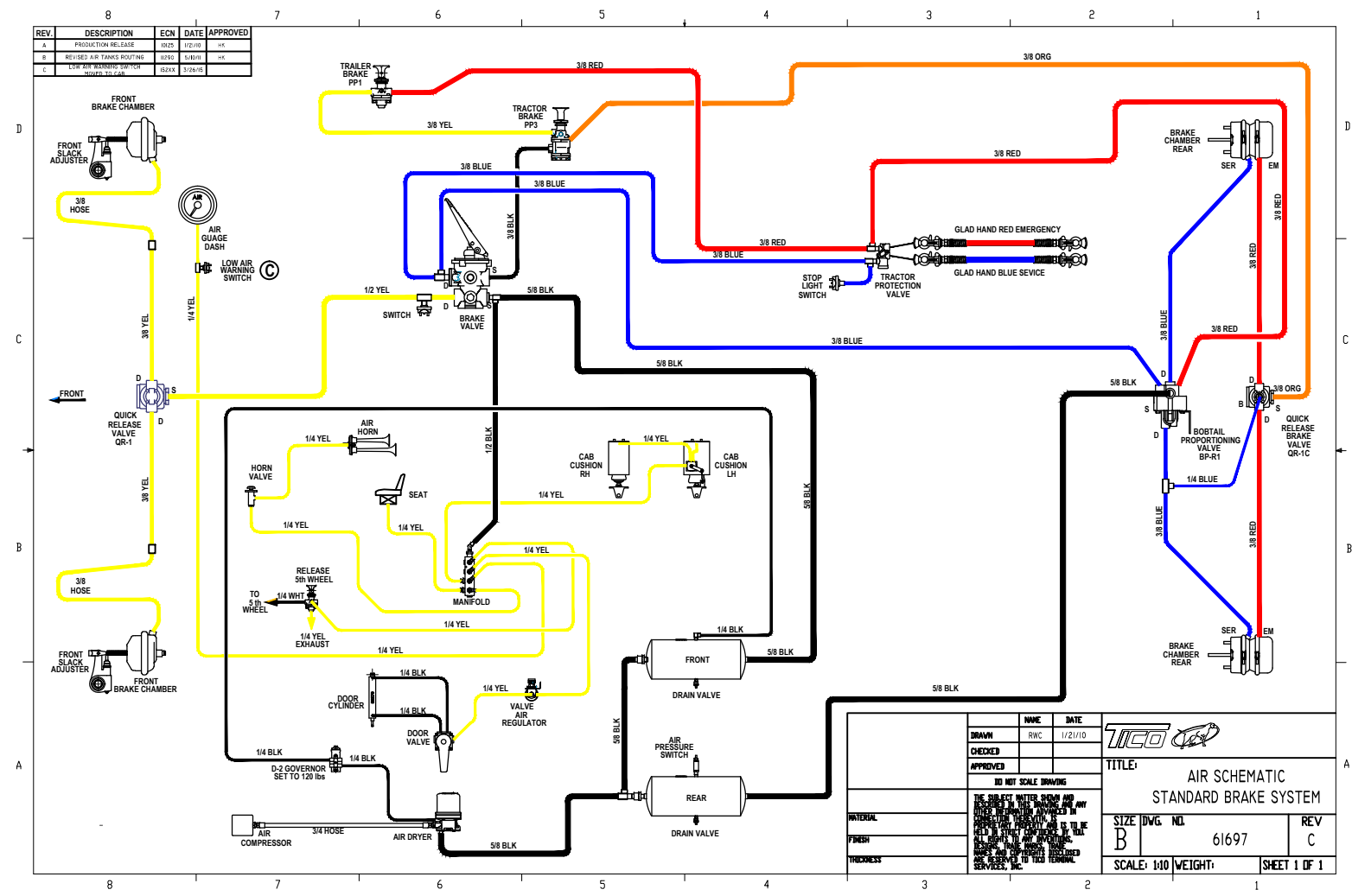


DIMENSIONS ARE IN INCHES TOLERANCES: DECIMAL: X.X ± 0.04 X.XX ± 0.03 X.XXX ± 0.005 ANGULAR: ± 0.5° FRACTIONAL: ± 1/32"		NAME SMB	DATE 5/7/15	 TICO/TERMINAL SERVICE 64 CYPRESS RIDGE DR. RIDGELAND, SC 29936 (843) 717-2226
INTERPRET GEOMETRIC TOLERANCING PER: ASME Y14.5M-1994		DO NOT SCALE DRAWING		
THE SUBJECT MATTER SHOWN AND DESCRIBED IN THIS DRAWING AND ANY OTHER INFORMATION ADVANCED IN CONNECTION THEREWITH IS PROPRIETARY PROPERTY AND IS TO BE HELD IN STRICT CONFIDENCE BY YOU. ALL RIGHTS TO ANY INVENTIONS, DESIGNS, TRADE MARKS, TRADE NAMES AND COPYRIGHTS DISCLOSED ARE RESERVED TO TICO/TERMINAL SERVICES, INC.		APPROVED		TITLE: AIR SYSTEM, 2-TANK
FINISH	THICKNESS	SIZE D	DWG. NO. 71236-R1	REV
		SCALE: 1:150		WEIGHT: 3541.33

REV 71236-R1

TICO PRO-SPOTTER				
S/N:		AIR SYSTEM - OFF ROAD		71236
ITEM	PART #	QTY/M	DESCRIPTION	TASK
	71236-R1	REF	AIR SYSTEM - 2 TANK	
	61697	REF	SCHEMATIC, STANDARD SYSTEM, 2 TANKS	
1	42087	1	ASSEMBLY, AIR TANK, TWO TANKS	
2	60023	1	GOVERNOR, D2 W/GASKET	
3	90026	1	BRAKE PEDAL	
4	90057	1	VALVE, BRAKE, E-3	
5	40572	1	VALVE, BOBTAIL/PROPORTIONING, BP-R1 W/BRACKET	
6	10592	1	VALVE, BRAKE QUICK RELEASE, QR-1C	
7	40550	1	VALVE, BRAKE QUICK RELEASE, QR-1	
8	90069	1	VALVE, TRACTOR PROTECTION	
9	90078	2	SWITCH, PRESSURE	
10	10949	1	MANIFOLD, ASSEMBLY AIR	
11	90295	1	VALVE, AIR REGULATOR	
12	40776	1	SWITCH, LOW AIR PRESSURE (70 PSI)	
13	40022	1	VALVE, AIR PRESSURE RELIEF	
14	40029-1	1	VALVE, CHECK	
15	40817	1	ELBOW, 90°, 1/2" NPTM X 1/2" NPTF	
16	42064	1	PUSH CONNECT, 90°, 1/2" NPTM X 1/2" TUBE	
17	40900	1	TEE, BRASS STREET, 1/4" NPT	
18	90873	1	BUZZER, LOW AIR WARNING (70 PSI)	
19	62253	1	BRACKET, HOSE GUIDE	
	90095	REF	VALVE, TRAILER BRAKE	
	90094	REF	VALVE, TRACTOR BRAKE	
20	50038-1	3	GLADHAND, BLUE	
21	50039-1	3	GLADHAND, RED	
22	50303	2	HOSE ASSEMBLY, TRAILER AIR, 3/8 X 15 FT	
23	10356	1	SPRING	
24	40080	1	CLAMP, TRAILER HOSE	
25	40687	2	HOSE ASSEMBLY, FRONT BRAKE CHAMBER	
26	40799	2	FITTING, CLOSE NIPPLE, BRASS, 1/2 NPT	
27	40899	2	FITTING, ELBOW, 45°, BRASS, 1/2 NPT	
			NOTE: SET AIR GOVERNOR AT 120 PSI	
REV	DATE	BY		SHEET
				1 OF 1

REV.	DESCRIPTION	ECN	DATE	APPROVED
A	PRODUCTION RELEASE	1023	1/21/10	HW
B	REVISED AIR TANKS ROUTING	1024	5/18/10	HW
C	LOW AIR WARNING SWITCH	1024A	3/26/10	



DRAWN	HW	DATE	
CHECKED	RWC	1/21/10	
APPROVED			
DO NOT SCALE DRAWING THE SUBJECT MATTER SHOWN AND ANY INFORMATION CONTAINED HEREIN IS TO BE USED ONLY FOR THE PURPOSES SPECIFIED AND IS NOT TO BE REPRODUCED OR TRANSMITTED IN ANY FORM OR BY ANY MEANS, ELECTRONIC OR MECHANICAL, INCLUDING PHOTOCOPYING, RECORDING, OR BY ANY INFORMATION STORAGE AND RETRIEVAL SYSTEM, WITHOUT PERMISSION IN WRITING FROM TICO TOOL SERVICES, INC.			TITLE: AIR SCHEMATIC STANDARD BRAKE SYSTEM
SIZE	DWG. NO.	REV	
B	61697	C	
SCALE: 1/10	WEIGHT:	SHEET 1 OF 1	