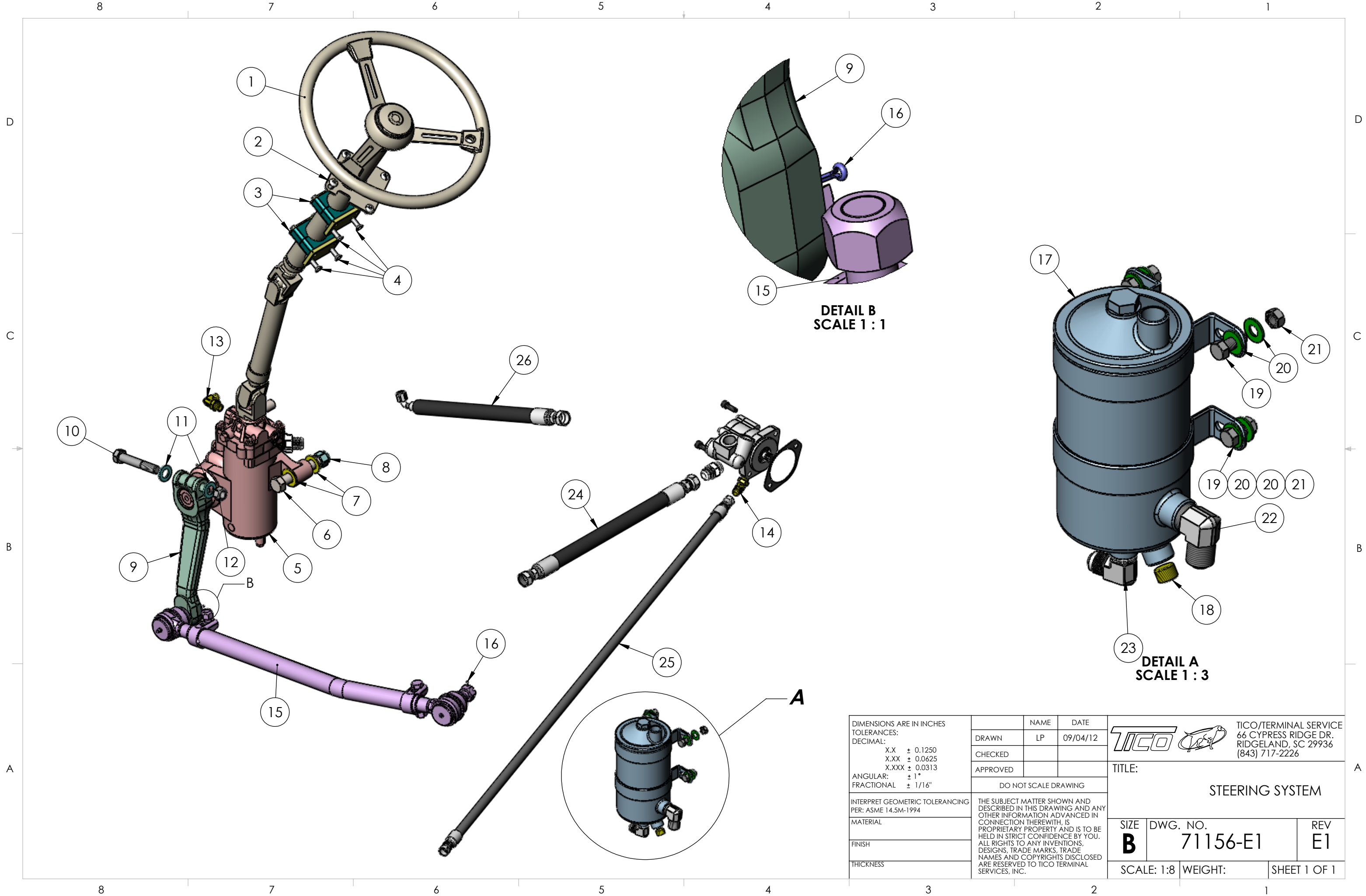


ENGINEERING P/L


S/N: STEERING SYSTEM TRW GEAR, COLUMN W/HORN 71156

ITEM	PART #	QTY/M	DESCRIPTION	TASK
	71156-E1	REF	STEERING SYSTEM TRW GEAR, COLUMN W/HORN	
1	90624-1	1	ASSEMBLY, STEERING COLUMN W/ HORN & TURN SIGNALS	
2	80166	4	SCREW, SLOTTED, 5/16-18 X 1 1/4 LG	
3	90640	2	ASSEMBLY, CLAMP, STEERING	
4	83209	4	SCREW, SOCKET, 3/8-16 X 1" LG	
5	30145	1	STEERING GEAR, TRW	
6	82509	3	BOLT, HEX, 7/8-9 X 4"	
7	85118	6	WASHER, 7/8	
8	85030	3	NUT, NYLOCK, 7/8-9 NC	
9	30143	1	PITMAN ARM, TRW	
10	82948	1	BOLT, HEX, 3/4-16 X 4 1/2" LG	
11	85117	2	WASHER, FLAT, 3/4	
12	85084	1	LOCKNUT, 3/4-16	
13	40460	1	FITTING, 90°, #8 O RING X #8 JIC	
14	40477	1	FITTING, 45°, #8 O RING X #8 JIC	
15	91531	1	DRAGLINK	
16	80148	2	COTTER PIN, 1/8	
	61916	REF	PUMP, STEERING, 4 GPM, 2150 PSI, FLOW CONTRL, IXETIC	
	60212	REF	GASKET, HYD PUMP	
	80175	REF	BOLT SHS 10 MM X 1.50 X 30 MM LG	
17	40494	1	RESERVOIR, POWER STEERING	
18	80163	1	PLUG, ALLEN, 1/2"	
19	82373	4	BOLT, HEX, 7/16-14 X 1" LG	
20	85114	8	WASHER, 7/16	
21	85026	4	NUT, NYLOCK, 7/16-14	
22	40928	1	FITTING, 90°, 3/4 NPT X #12 JIC	
23	40502	1	FITTING, 90°, 1/2 NPT X #8 JIC	
24	60574	1	HOSE ASSY, PUMP TO RESERVOIR	
25	605580-1	1	HOSE ASSY, PUMP TO STEERING GEAR	
26	40802	1	HOSE ASSY, GEAR TO RESERVOIR	
REV	DATE	BY		SHEET
				1 OF 1



**DETAIL B
SCALE 1 : 1**

**DETAIL A
SCALE 1 : 3**

DIMENSIONS ARE IN INCHES TOLERANCES: DECIMAL: X.X ± 0.1250 X.XX ± 0.0625 X.XXX ± 0.0313 ANGULAR: ± 1° FRACTIONAL ± 1/16"	NAME	DATE	 TICO/TERMINAL SERVICE 66 CYPRESS RIDGE DR. RIDGELAND, SC 29936 (843) 717-2226	
	DRAWN	LP		09/04/12
	CHECKED			
	APPROVED			
INTERPRET GEOMETRIC TOLERANCING PER: ASME 14.5M-1994	DO NOT SCALE DRAWING		TITLE:	
MATERIAL			STEERING SYSTEM	
FINISH	SIZE	DWG. NO.	REV	
THICKNESS	B	71156-E1	E1	
	SCALE: 1:8	WEIGHT:	SHEET 1 OF 1	