


DIMENSIONS ARE IN INCHES		NAME	DATE	 TICO/TERMINAL SERVICE 66 CYPRESS RIDGE DR. RIDGELAND, SC 29936 (843) 717-2226	
TOLERANCES:		DRAWN	SMB		9/17/15
DECIMAL:		CHECKED			
X.X ± 0.1250 X.XX ± 0.0625 X.XXX ± 0.0313		APPROVED			
ANGULAR: ± 1°		DO NOT SCALE DRAWING			
FRACTIONAL: ± 1/16"		THE SUBJECT MATTER SHOWN AND DESCRIBED IN THIS DRAWING AND ANY OTHER INFORMATION ADVANCED IN CONNECTION THEREWITH, IS PROPRIETARY PROPERTY AND IS TO BE HELD IN STRICT CONFIDENCE BY YOU. ALL RIGHTS TO ANY INVENTIONS, DESIGNS, TRADE MARKS, TRADE NAMES AND COPYRIGHTS DISCLOSED ARE RESERVED TO TICO TERMINAL SERVICES, INC.			
INTERPRET GEOMETRIC TOLERANCING PER: ASME 14.5M-1994		TITLE: BRAKE SYSTEM-ABS BENDIX EC60			
MATERIAL		SIZE	DWG. NO.	REV	
FINISH		B	71117-A1	A1	
THICKNESS		SCALE: 1:20		SHEET 1 OF 1	

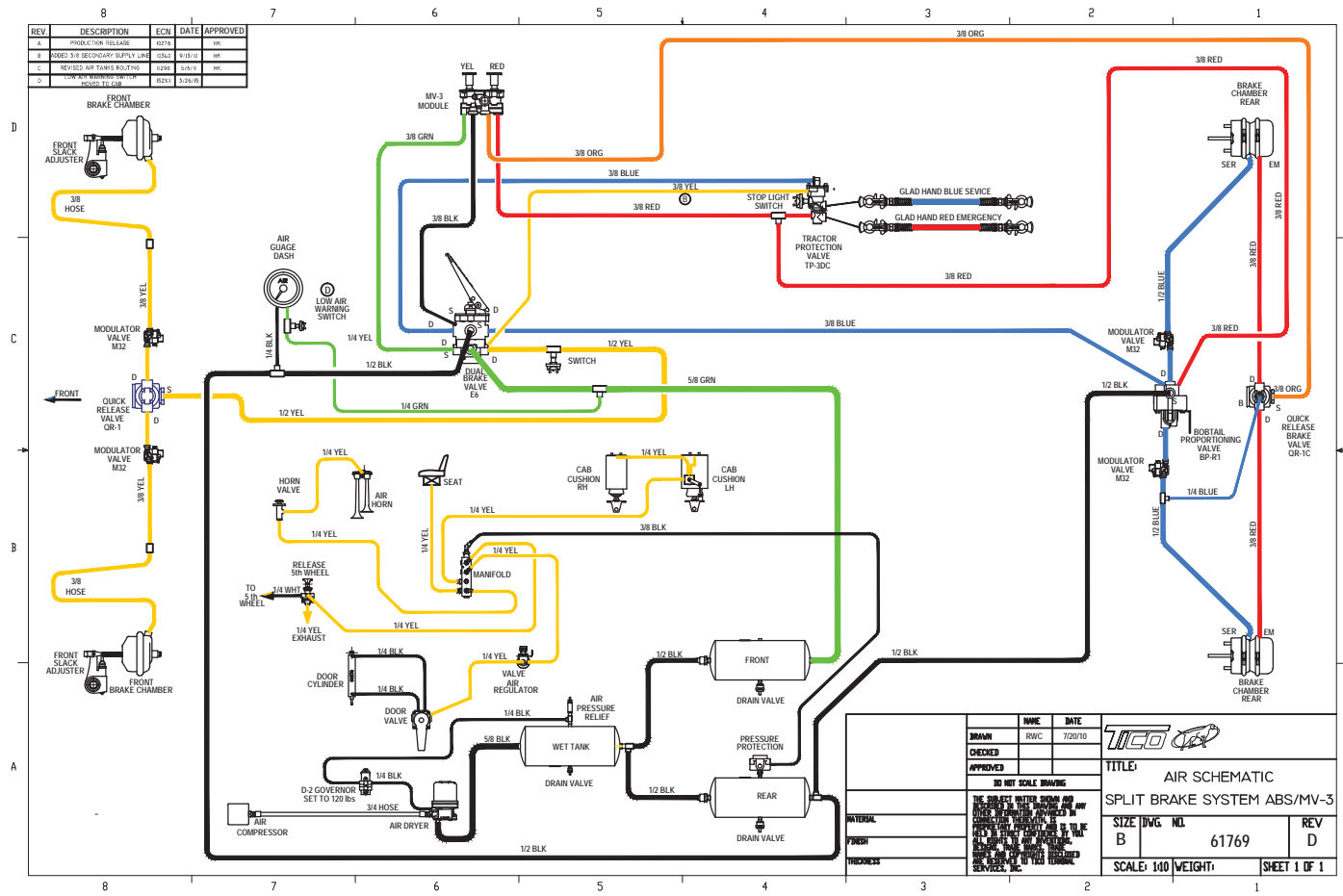
TICO PRO-SPOTTER

S/N: BRAKE SYSTEM, ABS BENDIX EC 60 **71117**

ITEM	PART #	QTY/M	DESCRIPTION	TASK
	71117-A1	REF	BRAKE SYSTEM, ABS BENDIX EC 60	
1	40676	1	ECU-60, BENDIX	
2	83228	3	SCREW, SOCKET HD, 1/4-20 X 1 1/4	
3	85023	3	NUT, NYLOCK, 1/4-20	
4	40677	4	VALVE, MODULATOR, BENDIX	
5	10974a	1	PLATE, MOUNT, ABS MODULATOR, REAR	
6	81623	4	BOLT, HEX HD, 5/16NC X 3 LG	
7	85101	20	WASHER, 5/16 FLAT	
8	85024	12	NUT, 5/16NC, NYLOK	
9	82371	4	BOLT, HEX HD, 5/16NC X 1 LG	
	42265	4	FITTING, ELBOW 90°BRASS, 1/2 TUBE X 1/2 NPT	
	40572	REF	VALVE-BOBTAIL/PROPORTIONING, BP-R1	
10	40693	1	PLATE, MOUNT, ABS MODULATOR, FRONT	
11	82393	2	BOLT, HEX HD, 5/16NC X 1 1/2 LG	
	42265	4	FITTING, ELBOW 90°BRASS, 1/2 TUBE X 1/2 NPT	
	40751	2	FITTING, REDUCER BRASS, 1/2 TUBE X 3/8 NPT	
	40906	2	FITTING, HEX NIPPLE BRASS, 3/8 NPT	
	40550	REF	VALVE-BRAKE QUICK RELEASE, QR-1	
12	90727	1	IND LAMP, ABS FAILURE/ABS TRAILER	
13	90744	1	SWITCH, ABS DIAGNOSTIC	
14	61533	1	HARNESS, ABS	
15	90895	1	HARNESS, ABS SENSOR/MODULATOR, LH	
16	90896	1	HARNESS, ABS SENSOR/MODULATOR, RH	
	61769	REF	SCHEMATIC, AIR SYSTEM, ABS, MV3	
	61702	REF	SCHEMATIC, AIR SYSTEM, ABS	

REV	DATE	BY	SHEET
A	9/29/2015	HK	1 OF 1

REV	DESCRIPTION	ECN	DATE	APPROVED
A	PRODUCTION RELEASE	10174		HP
B	MODEL 3-8 SECONDARY SUPPLY LINE	12142	9/18/10	HP
C	REVISED AIR TANK'S ROUTING	11299	3/27/10	HP
D	NEW WET TANK FOR THE MODEL TO 428	10281	3/25/10	



DRAWN	NAME	DATE
RWC		7/20/10
CHECKED		
APPROVED		

30 NET SCALE DRAWING

THE SUBJECT MATTER SHOWN AND DESCRIBED HEREIN IS UNLESS OTHERWISE SPECIFIED TO BE THE PROPERTY OF TITCO. IT IS TO BE KEPT IN CONFIDENCE AND NOT TO BE REPRODUCED OR TRANSMITTED IN ANY FORM OR BY ANY MEANS, ELECTRONIC OR MECHANICAL, INCLUDING PHOTOCOPYING, RECORDING, OR BY ANY INFORMATION STORAGE AND RETRIEVAL SYSTEM, WITHOUT THE WRITTEN PERMISSION OF TITCO SERVICES, INC.

TITCO

TITLE: AIR SCHEMATIC
SPLIT BRAKE SYSTEM ABS/MV-3

SIZE DWG. NO. 61769 REV D

SCALE: 1/40 WEIGHT: SHEET 1 OF 1

