

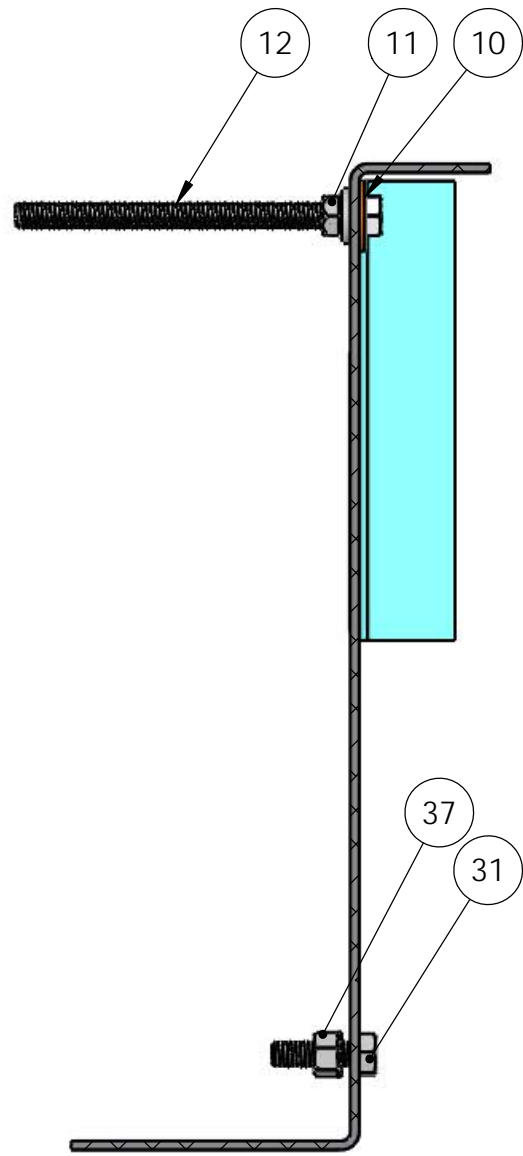
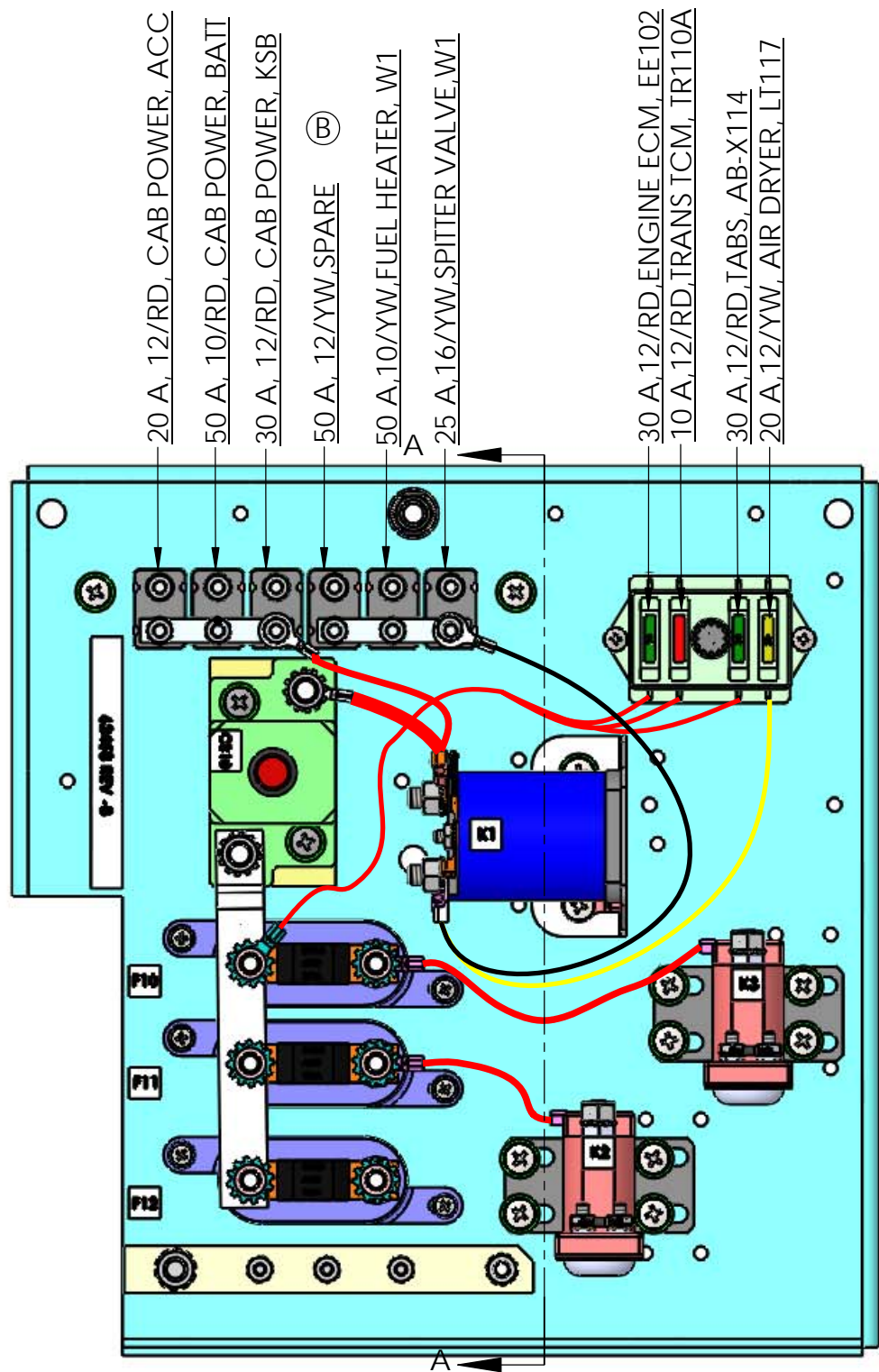
- NOTES:
1. SECURELY TIGHTEN ALL FASTENERS.
  2. ENSURE FUSES AND RELAYS ARE FULLY SEATED.
  3. SPLIT LOCK WASHERS ARE NOT ALLOWED ON ANY ELECTRICAL CONNECTIONS.

REVISIONS				
REV.	DESCRIPTION	DATE	ECN	APPROVED
A	INITIAL RELEASE	3/25/15	15193	
B	UPDATED QTY'S OF ITEMS #'S 7 AND 9	9/23/15	15390	

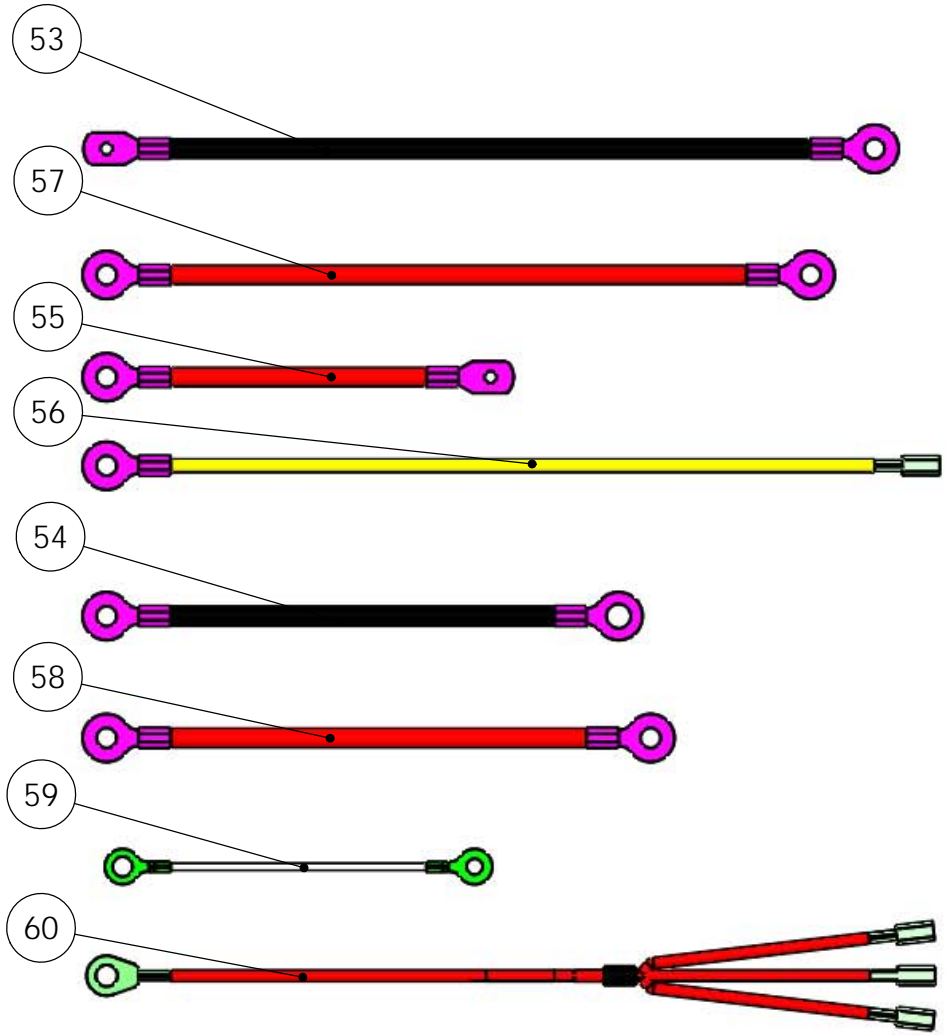
ITEM NO.	QTY.	PART NUMBER	DESCRIPTION
60	1	91310	WIRE ASSY, 12 GA, RED, OSB FUSE POWER
59	1	91309	WIRE ASSY, 18 GA, WHI, #10 x 1/4", 4"
58	1	91308	WIRE ASSY, 6 GA, BLK, 5/16" x 5/16", 6.5"
57	1	91307	WIRE ASSY, 6 GA, RED, 5/16" x 5/16", 9"
56	1	91279	WIRE ASSY, 10 GA, YLW, 5/16" x 1/4" F SPADE, 5"
55	1	91305	WIRE ASSY, 6 GA, RED, 5/16" x #10, 6"
54	1	91304	WIRE ASSY, 4 GA, BLK, 5/16" x 3/8", 6"
53	1	91278	CABLE- 6 GA BLK, 5/16 X #10
52	1	91292	DECAL SPITTER VALVE
51	1	91293	DECAL K3
50	1	91294	DECAL K2
49	1	91295	DECAL K1
48	1	91296	DECAL F12
47	1	91297	DECAL F11
46	1	91298	DECAL F10
45	1	91299	DECAL CB2
44	1	91300	DECAL CB10
43	1	91301	DECAL 62458 REVISION
42	1	91302	DECAL FUSE BLOCK
41	1	91303	C.B. DECAL
40	3	91269	HARNES, ASSEMBLY, DIODE
39	1	61877-1	BUSBAR
38	1	SBJ-4201	RELAY, AMETEK, 12V/ 200 A SPNO
37	1	91281	NUT, HEX w/ TOOTH WASHER, 3/8"-16 PLATED
36	4	91284	NUT, HEX w/ TOOTH WASHER, 5/16"-24 PLATED
35	2	91280	NUT, HEX w/ TOOTH WASHER, 5/16"-18 PLATED
34	1	91283	NUT, HEX w/ TOOTH WASHER, 1/4"-28 PLATED
33	9	91282	NUT, HEX w/ TOOTH WASHER, 10-32, PLATED
32	2	91286	TOOTH WASHER, 3/8, PLATED
31	1	91285	SCREW, HEX, 3/8"-16 x 1.25, SS
30	13	80311	WASHER, FLAT 1"SS
29	2	80280	SCREW, PH 1/4-28 x 3/4 Lg SS
28	1	61869	AMG/MEGA FUSE 250A
27	13	85133	LOCKWASHER, 1/4-20, PLT
26	1	42060	BUSS BAR, NICKEL PLATED COPPER
25	1	91025	FUSE, 20A (YELLOW)
24	2	46563	CIRCUIT BREAKER BUS BAR
23	9	80234	LOCKWASHER, #10
22	6	80239	WASHER, FLAT 10-32 SS
21	6	80196	SCREW, PAN HD 10-32 x 3/4" LG
20	2	61868	AMG/MEGA FUSE 125A
19	3	80249	LOCKWASHER, EXTERNAL TOOTH 1/4"SS
18	3	61867	AMG/MEGA FUSE HOLDER W/COVER
17	1	61870	CIRCUIT BREAKER, FLDM SERIES 120A
16	2	91027	FUSE, ATO 30A AMP (GREEN)
15	1	91023	FUSE, 10A (RED)
14	13	80279	SCREW, PH 1/4-28 x 1/2 Lg
13	5	80195	SCREW, PAN HD 10-32 x 1/2 Lg
12	1	80359	BOLT, HEX 3/8-16 NC, FULL THDS, 304 SS
11	1	80205	FLANGENUT, 3/8-16, PLT
10	1	80314	WASHER, FLAT 3/8 SS
9	1	61871	CIRCUIT BREAKER, 12V 25A TYPE 1 SERIES 12X
8	1	90985	CIRCUIT BREAKER, 12V 20A TYPE 1 SERIES 12X
7	3	90988	CIRCUIT BREAKER, 12V 50A TYPE 1 SERIES 12X
6	1	90986	CIRCUIT BREAKER, 12V 30A TYPE 1 SERIES 12X
5	1	91521	COVER - PDC PANEL
4	2	61874	RELAY CONT DUTY/ 100A
3	1	87128-6	BRACKET, CIRCUIT BREAKER
2	1	46080	FUSE BLOCK
1	1	61675-2	BRACKET, CHASSIS PDC

DIMENSIONS ARE IN INCHES TOLERANCES: DECIMAL: X.X ± 0.1250 X.XX ± 0.0625 X.XXX ± 0.0313 ANGULAR: ± 1° FRACTIONAL ± 1/16"		NAME CS	DATE 03/18/2015	<p>TICO/TERMINAL SERVICE 66 CYPRESS RIDGE DR. RIDGELAND, SC 29936 (843) 717-2226</p>
INTERPRET GEOMETRIC TOLERANCING PER: ASME 14.5M-1994		CHECKED		
MATERIAL		APPROVED		
FINISH		DO NOT SCALE DRAWING		
THICKNESS		THE SUBJECT MATTER SHOWN AND DESCRIBED IN THIS DRAWING AND ANY OTHER INFORMATION ADVANCED IN CONNECTION THEREWITH, IS PROPRIETARY PROPERTY AND IS TO BE HELD IN STRICT CONFIDENCE BY YOU. ALL RIGHTS TO ANY INVENTIONS, DESIGNS, TRADE MARKS, TRADE NAMES AND COPYRIGHTS DISCLOSED ARE RESERVED TO TICO TERMINAL SERVICES, INC.		<p>TITLE: <b>TICO CHASSIS PDC QSB III, HI AMP</b></p>
		SIZE <b>B</b>	DWG. NO. 62458	REV <b>B</b>
		SCALE: 1:8	WEIGHT:	SHEET 1 OF 4

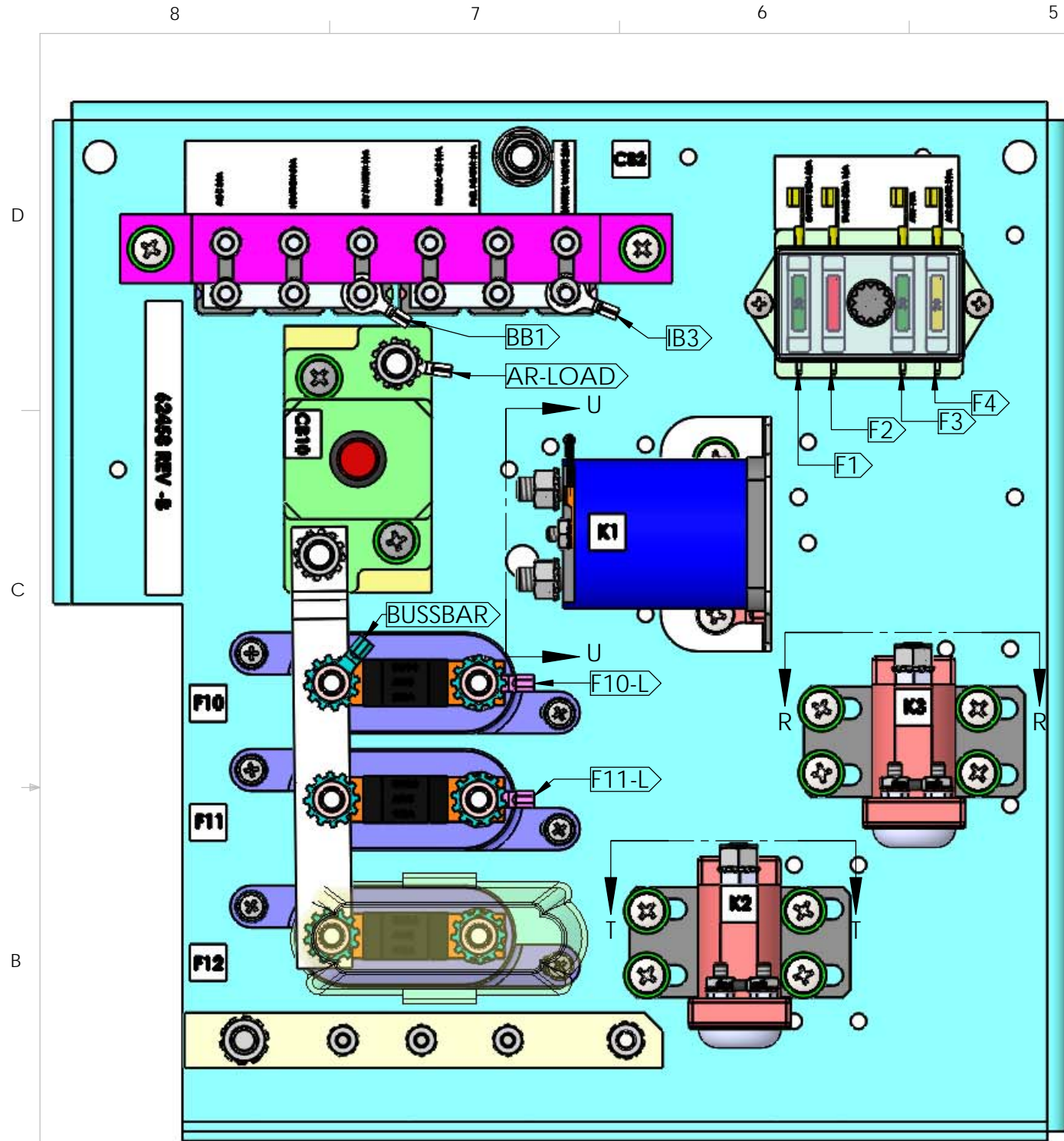
REVISIONS				
REV.	DESCRIPTION	DATE	ECN	APPROVED
A	INITIAL RELEASE	3/25/15	15193	-
B	UPDATED ASSEMBLY NOTE	9/23/15	15390	-



SECTION A-A  
 SCALE 1 : 2.75



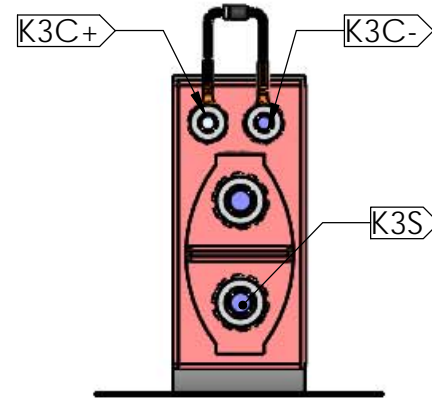
DIMENSIONS ARE IN INCHES TOLERANCES: DECIMAL: X.X ± 0.1250 X.XX ± 0.0625 X.XXX ± 0.0313 ANGULAR: ± 1° FRACTIONAL ± 1/16"	NAME	DATE	TICO/TERMINAL SERVICE 66 CYPRESS RIDGE DR. RIDGELAND, SC 29936 (843) 717-2226	
	DRAWN	CS		03/18/2015
	CHECKED			
	APPROVED			
INTERPRET GEOMETRIC TOLERANCING PER: ASME 14.5M-1994	DO NOT SCALE DRAWING		TITLE: <b>TICO CHASSIS PDC          QSB III, HI AMP</b>	
FINISH	THE SUBJECT MATTER SHOWN AND DESCRIBED IN THIS DRAWING AND ANY OTHER INFORMATION ADVANCED IN CONNECTION THEREWITH, IS PROPRIETARY PROPERTY AND IS TO BE HELD IN STRICT CONFIDENCE BY YOU. ALL RIGHTS TO ANY INVENTIONS, DESIGNS, TRADE MARKS, TRADE NAMES AND COPYRIGHTS DISCLOSED ARE RESERVED TO TICO TERMINAL SERVICES, INC.		SIZE <b>B</b>	
THICKNESS			DWG. NO. 62458	
			REV <b>B</b>	
	SCALE: 1:8	WEIGHT:	SHEET 2 OF 4	



F10= 250 AMPS  
 F11= 125 AMPS  
 F12= 125 AMPS

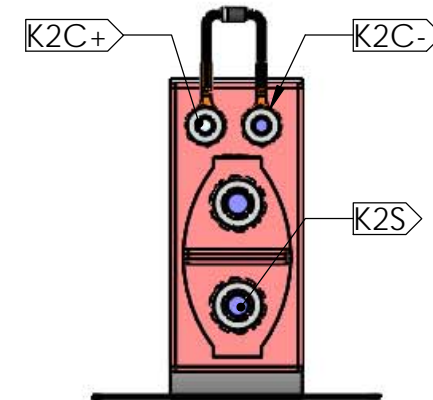
REVISIONS				
REV.	DESCRIPTION	DATE	ECN	APPROVED
A	INITIAL RELEASE	3/25/15	15193	-
B	UPDATED W05-A BASED ON REF P/N	9/23/15	15390	-

OBSERVE DIODE POLARITY  
K3 SOLENOID



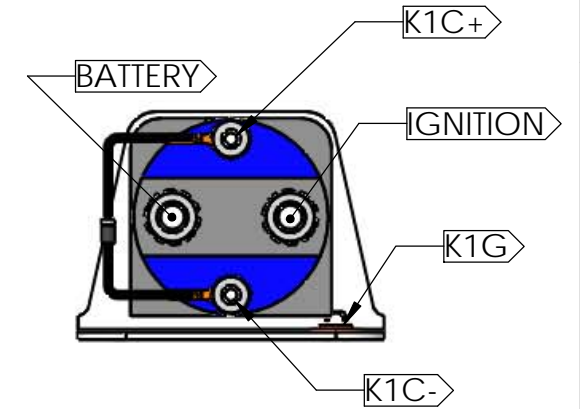
SECTION R-R  
SCALE 1 : 2

OBSERVE DIODE POLARITY  
K2 SOLENOID



SECTION T-T  
SCALE 1 : 2

OBSERVE DIODE POLARITY  
K1 SOLENOID



SECTION U-U  
SCALE 1 : 2

CIRCUIT	WIRE COLOR	WIRE GAUGE	START	FINISH	REMARK
W01	BLK	2	BATTERY	AR-LOAD	
W02	RED	6	BATTERY	BB1	
W03	RED	6	K3S	F10-L	
W04	RED	6	K2S	F11-L	
W05-A	RED	8	BUSSBAR	SPLICE 1	REF ITEM #60
W05-B	RED	12	SPLICE 1	F1	
W05-C	RED	12	SPLICE 1	F2	
W05-D	RED	12	SPLICE 1	F3	
W06	YLW	10	IGNITION	F4	
W07	BLK	6	IGNITION	IB3	
W08	WHT	18	K1-G	K1C-	SOLENOID GROUND
DIODE 1	-	-	K1C-	K1C+	REF ITEM #40
DIODE 2	-	-	K2C-	K2C+	REF ITEM #40
DIODE 3	-	-	K3C-	K3C+	REF ITEM #40

DIMENSIONS ARE IN INCHES  
 TOLERANCES:  
 DECIMAL:  
 X.X ± 0.06  
 X.XX ± 0.03  
 X.XXX ± 0.005  
 ANGULAR:  
 ± 0.5°  
 FRACTIONAL ± 1/32"

INTERPRET GEOMETRIC TOLERANCING PER: ASME 14.5M-1994

MATERIAL

FINISH

THICKNESS

NAME	DATE
DRAWN CS	3/25/15
CHECKED	
APPROVED	

DO NOT SCALE DRAWING

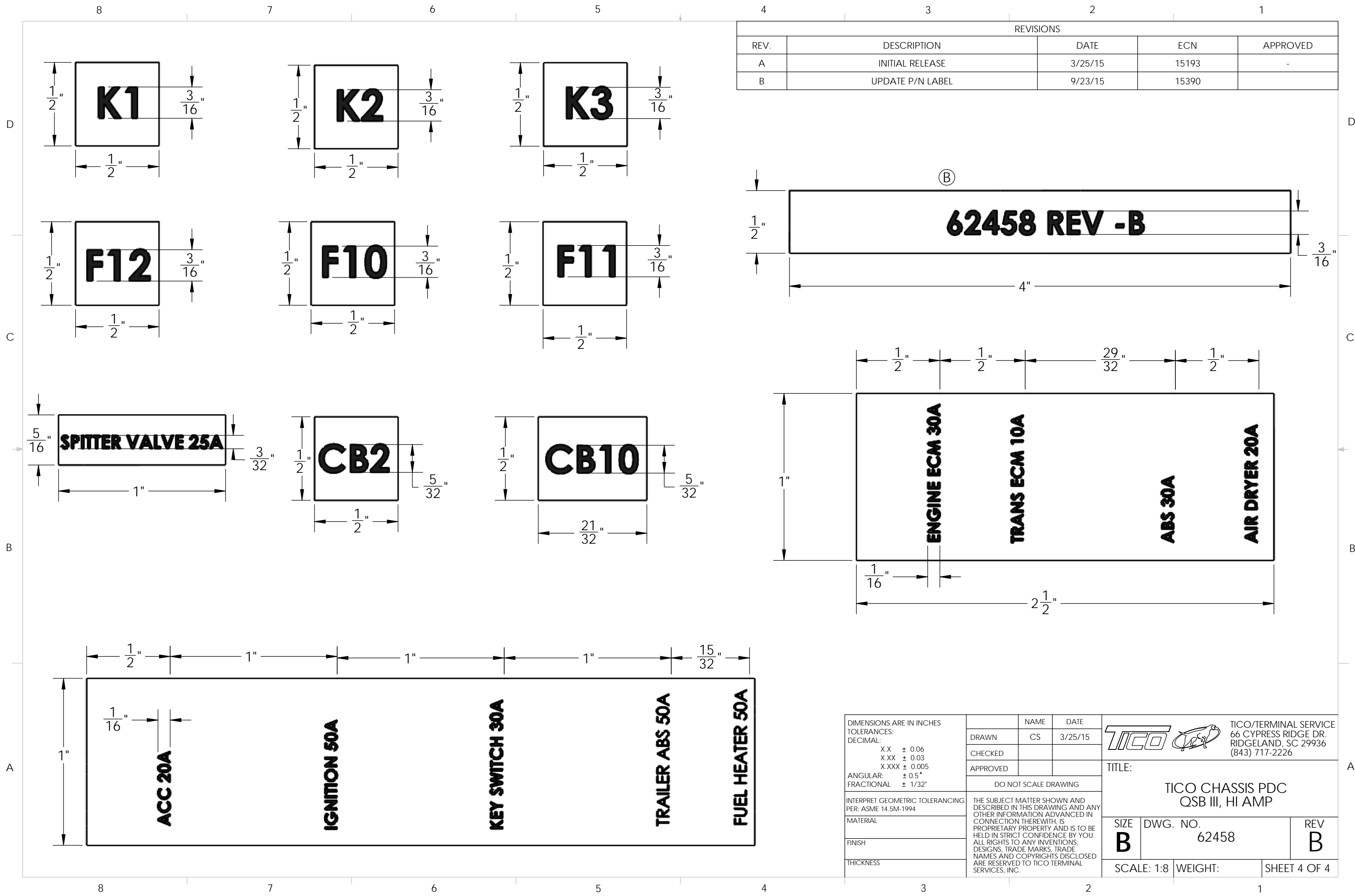
THE SUBJECT MATTER SHOWN AND DESCRIBED IN THIS DRAWING AND ANY OTHER INFORMATION ADVANCED IN CONNECTION THEREWITH, IS PROPRIETARY PROPERTY AND IS TO BE HELD IN STRICT CONFIDENCE BY YOU. ALL RIGHTS TO ANY INVENTIONS, DESIGNS, TRADE MARKS, TRADE NAMES AND COPYRIGHTS DISCLOSED ARE RESERVED TO TIC0 TERMINAL SERVICES, INC.

TICO/TERRMINAL SERVICE  
 66 CYPRESS RIDGE DR.  
 RIDGELAND, SC 29936  
 (843) 717-2226

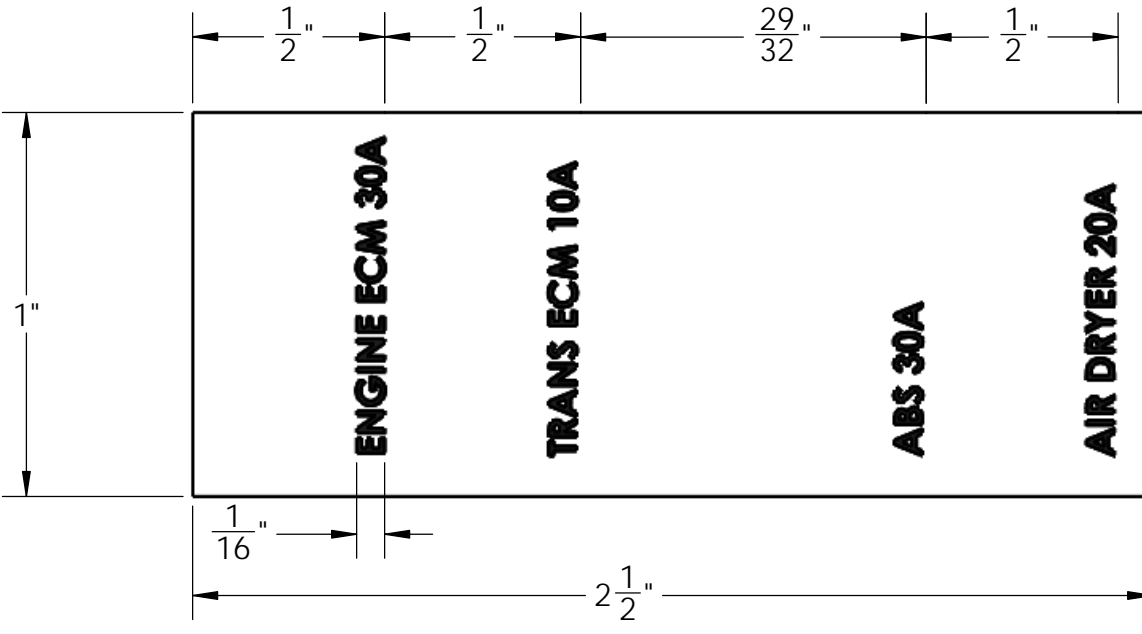
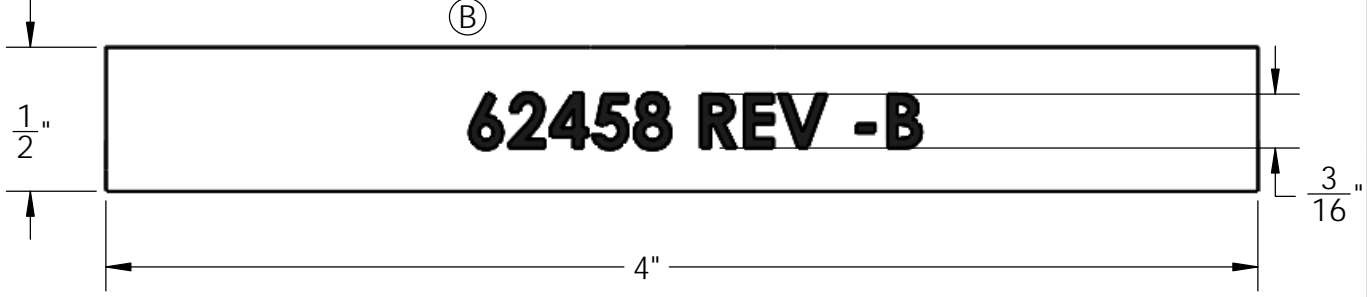
TITLE:  
**TICO CHASSIS PDC  
 QSB III, HI AMP**


SIZE <b>B</b>	DWG. NO. 62458	REV <b>B</b>
------------------	-------------------	-----------------

SCALE: 1:8 WEIGHT: SHEET 3 OF 4



REVISIONS				
REV.	DESCRIPTION	DATE	ECN	APPROVED
A	INITIAL RELEASE	3/25/15	15193	-
B	UPDATE P/N LABEL	9/23/15	15390	



DIMENSIONS ARE IN INCHES TOLERANCES: DECIMAL: X.X ± 0.06 X.XX ± 0.03 X.XXX ± 0.005 ANGULAR: ± 0.5° FRACTIONAL ± 1/32"	NAME	DATE	 TICO/TERMINAL SERVICE 66 CYPRESS RIDGE DR. RIDGELAND, SC 29936 (843) 717-2226	
	DRAWN	CS		3/25/15
	CHECKED			
	APPROVED			
INTERPRET GEOMETRIC TOLERANCING PER: ASME 14.5M-1994	DO NOT SCALE DRAWING		TITLE:	
MATERIAL	THE SUBJECT MATTER SHOWN AND DESCRIBED IN THIS DRAWING AND ANY OTHER INFORMATION ADVANCED IN CONNECTION THEREWITH, IS PROPRIETARY PROPERTY AND IS TO BE HELD IN STRICT CONFIDENCE BY YOU. ALL RIGHTS TO ANY INVENTIONS, DESIGNS, TRADE MARKS, TRADE NAMES AND COPYRIGHTS DISCLOSED ARE RESERVED TO TICO TERMINAL SERVICES, INC.		TICO CHASSIS PDC QSB III, HI AMP	
FINISH	SIZE	DWG. NO.	REV	
THICKNESS	<b>B</b>	62458	<b>B</b>	
	SCALE: 1:8	WEIGHT:	SHEET 4 OF 4	